

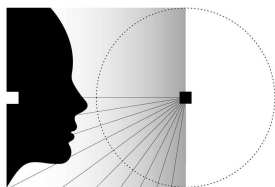
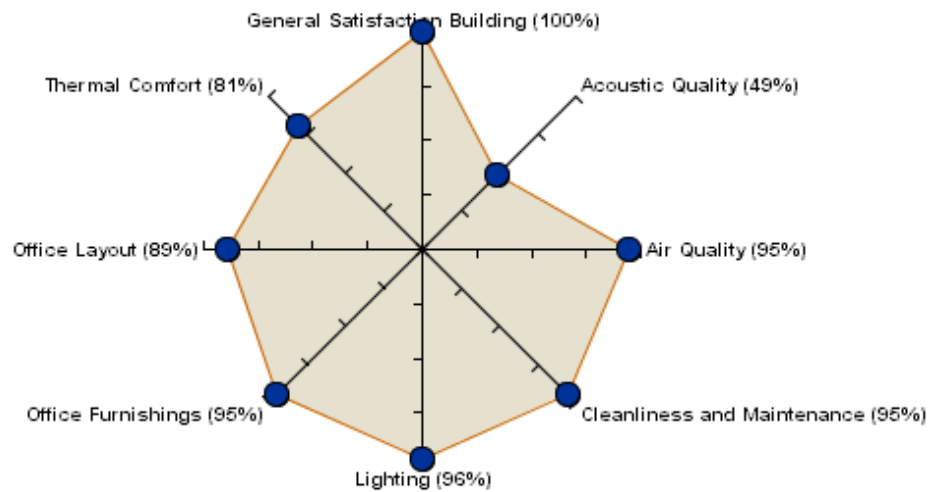
Enermodal HQ

Occupant Survey Report

Survey Dates: 9/13/2010 through 9/24/2010

Center for the Built Environment
University of California, Berkeley

Satisfaction in Core Survey Categories



C B E

1.1 How to Use This Report

This report contains a lot of detail about this building. You can use this report in different ways depending on the level of detail you need. The first section, the executive summary, is a high-level overview of the building's performance. It contains basic metrics by category. Read this section if you need a general understanding of the building's performance or its relationship to other buildings. This section answers 'how.' How is the building performing from the occupants' perspective.

Section two contains information at the question level. Here you can get specific information about the drivers behind the building's score in a particular category. You can also find information about occupant responses to a particular question. This section answers 'what.' What is contributing to this level of perceived performance?

Section three contains information from and about the occupants. This is where you look for demographic information and information about how occupants use the building. You can also find comments from occupants in this section. This section answers 'who.' Who is using the building?

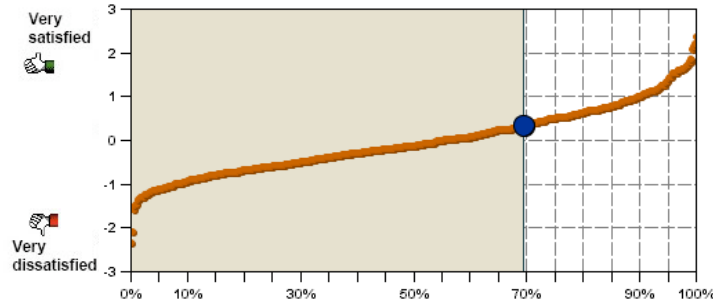
One of the most powerful uses of this report is diagnostic. The survey report gives you information about what's going right (or not so right) in your building. With this information you can make informed decisions about how to improve your buildings performance.

1.2 Building Scorecard

Performance of Enermodal HQ in core survey categories

Acoustic Quality

70%
Percentile

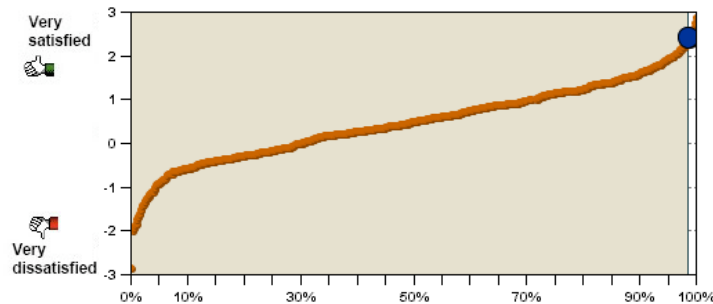


0.35
Mean Response

49%
Satisfied

Air Quality

99%
Percentile

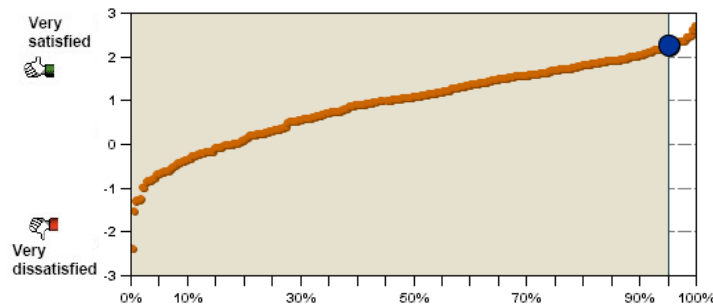


2.44
Mean Response

95%
Satisfied

Cleanliness and Maintenance

95%
Percentile

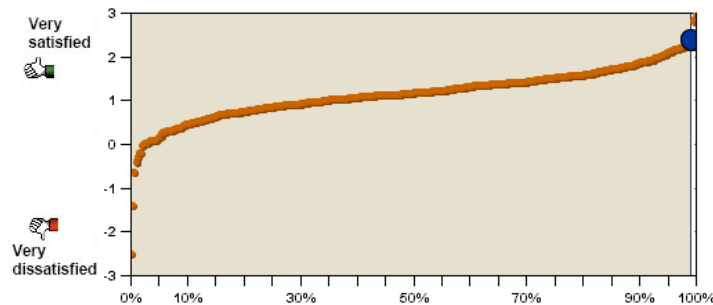


2.29
Mean Response

95%
Satisfied

Lighting

99%
Percentile



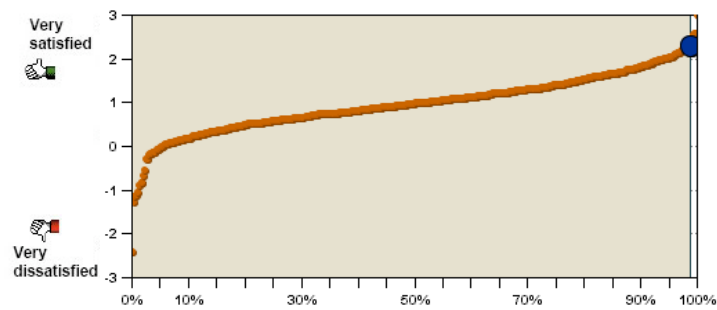
2.41
Mean Response

96%
Satisfied

Performance of Enermodal HQ in core survey categories

Office Furnishings

99%
Percentile

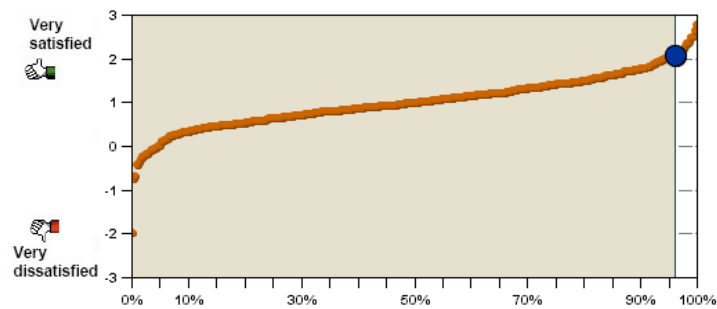


2.31
Mean Response

95%
Satisfied

Office Layout

96%
Percentile

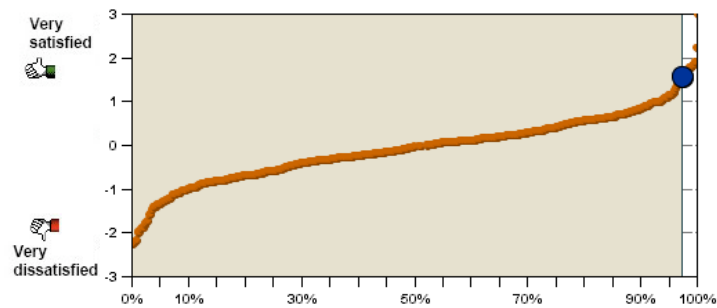


2.09
Mean Response

89%
Satisfied

Thermal Comfort

97%
Percentile



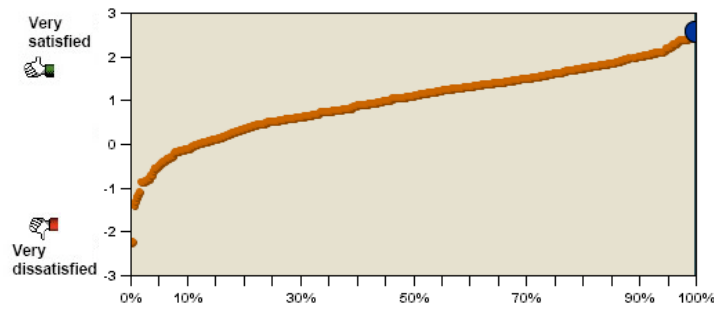
1.57
Mean Response

81%
Satisfied

Performance of Enermodal HQ in additional survey categories

**General
Satisfaction-
Building**

100%
Percentile

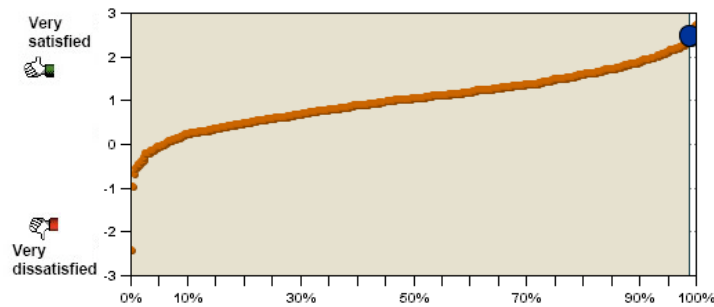


2.59
Mean Response

100%
Satisfied

**General
Satisfaction-
Workspace**

99%
Percentile

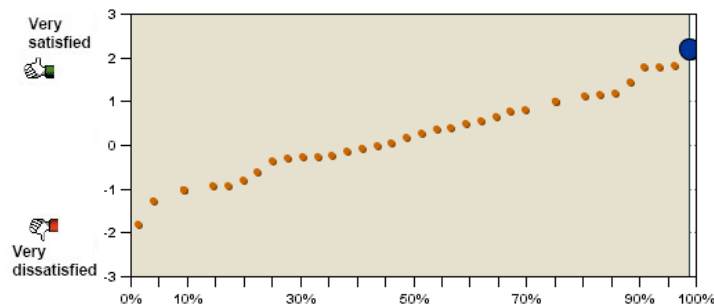


2.49
Mean Response

100%
Satisfied

**Operable
Windows**

99%
Percentile

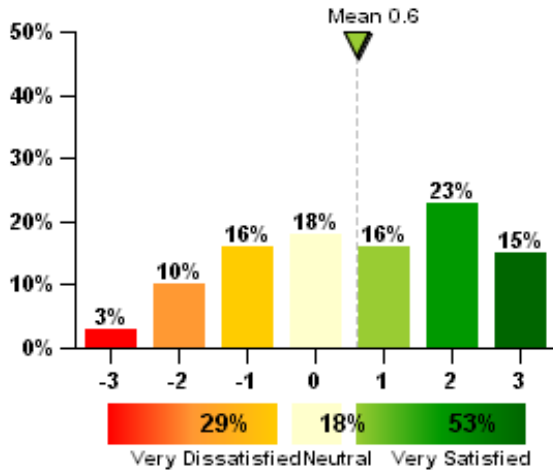


2.22
Mean Response

90%
Satisfied

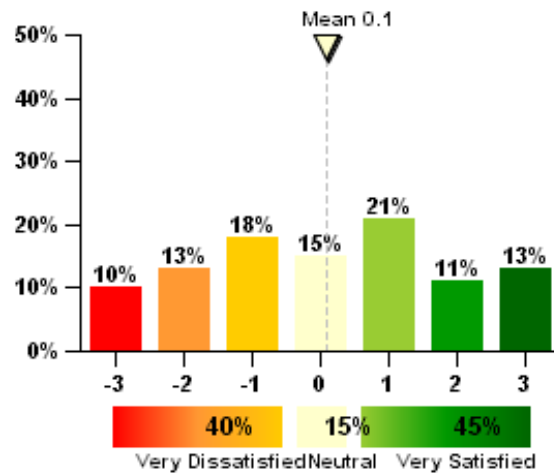
2.1 Acoustic Quality

How satisfied are you with the noise level in your workspace?



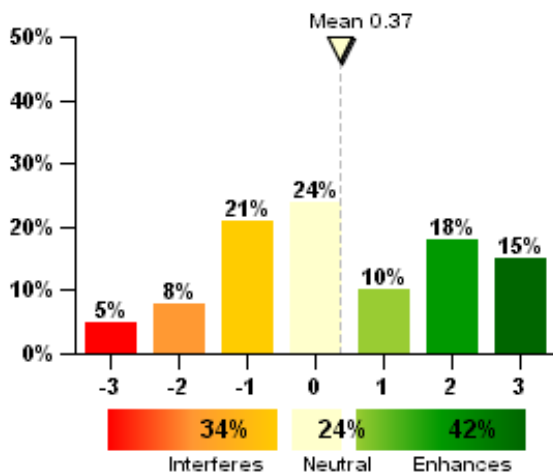
N=62

How satisfied are you with the sound privacy in your workspace (ability to have conversations without your neighbors overhearing and vice versa)?



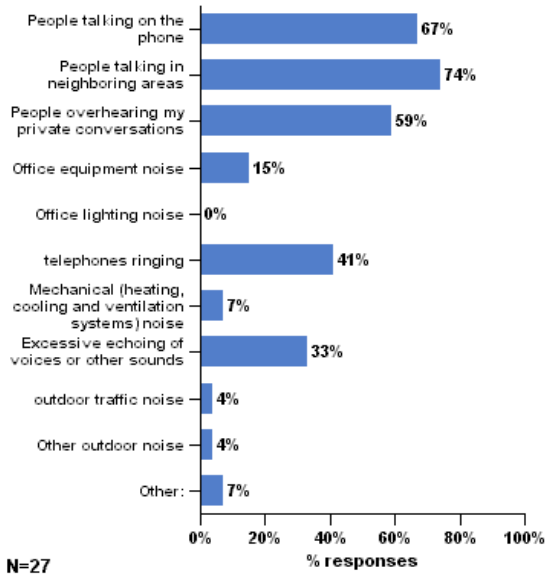
N=62

Overall, does the acoustic quality in your workspace enhance or interfere with your ability to get your job done?



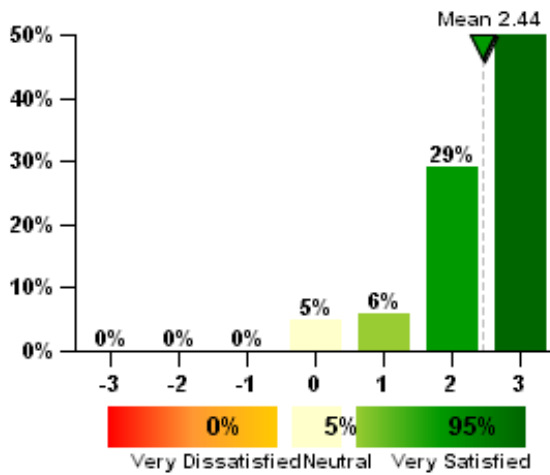
N=62

You have said you are dissatisfied with the acoustics in your workspace. Which of the following contribute to this problem? (check all that apply)



2.2 Air Quality

How satisfied are you with the air quality in your workspace (i.e. stuffy/stale air, cleanliness, odors)?



N=62

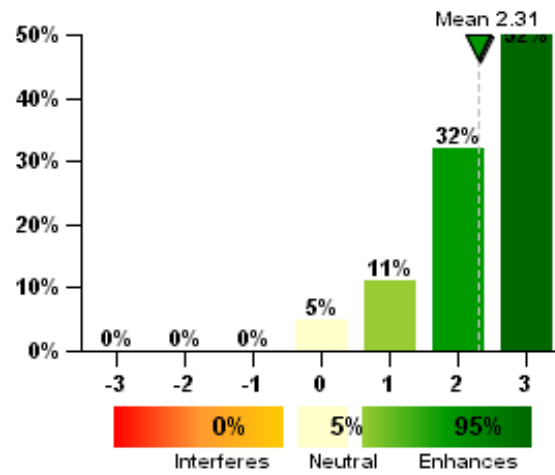
Air is stuffy/stale

Due to the limited number of responses to this question, its chart is not displayed

Air smells bad (odors)

Due to the limited number of responses to this question, its chart is not displayed

Overall, does the air quality in your workspace enhance or interfere with your ability to get your job done?



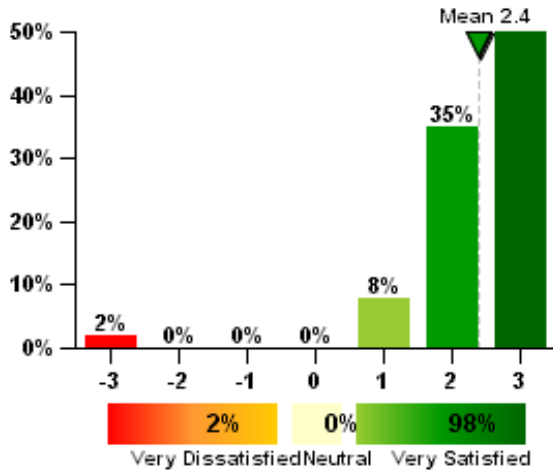
N=62

Air is not clean

Due to the limited number of responses to this question, its chart is not displayed

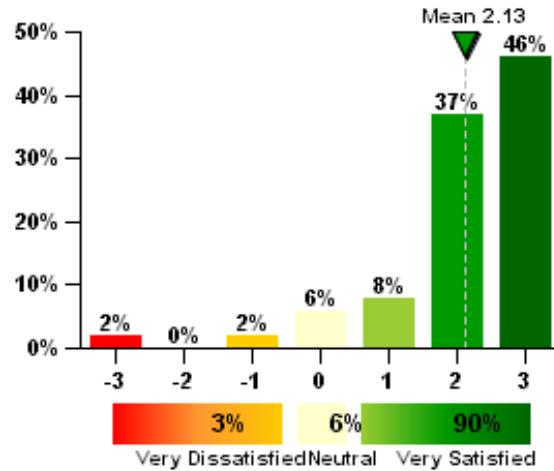
2.3 Cleanliness and Maintenance

How satisfied are you with general cleanliness of the overall building?



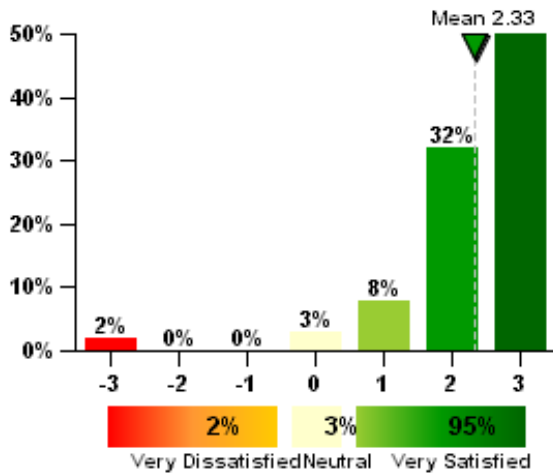
N=63

How satisfied are you with cleaning service provided for your workspace?



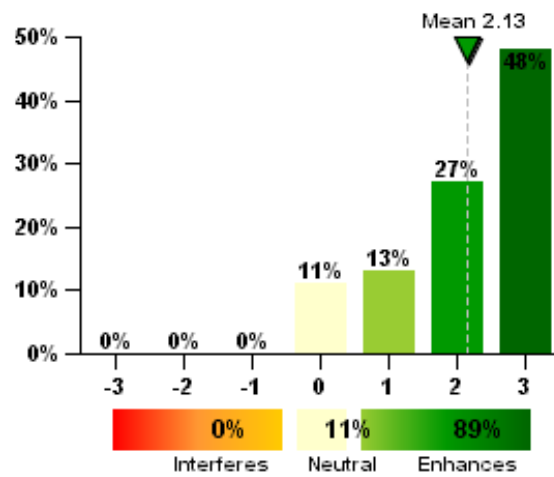
N=63

How satisfied are you with general maintenance of the building?



N=63

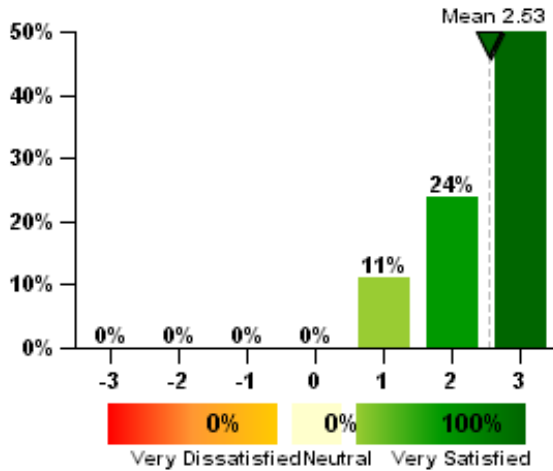
Does the cleanliness and maintenance of this building enhance or interfere with your ability to get your job done?



N=62

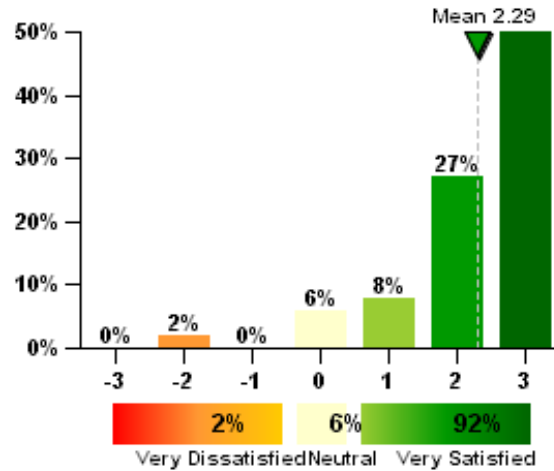
2.4 Lighting

How satisfied are you with the amount of light in your workspace?



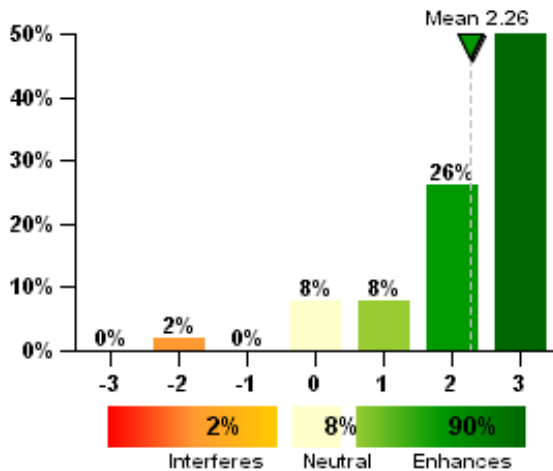
N=62

How satisfied are you with the visual comfort of the lighting (e.g., glare, reflections, contrast)?



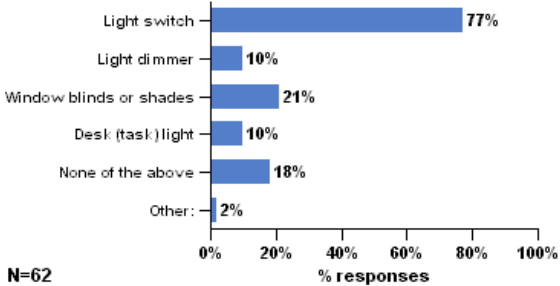
N=62

Overall, does the lighting quality enhance or interfere with your ability to get your job done?



N=62

Which of the following controls do you have over the lighting in your workspace? (check all that apply)



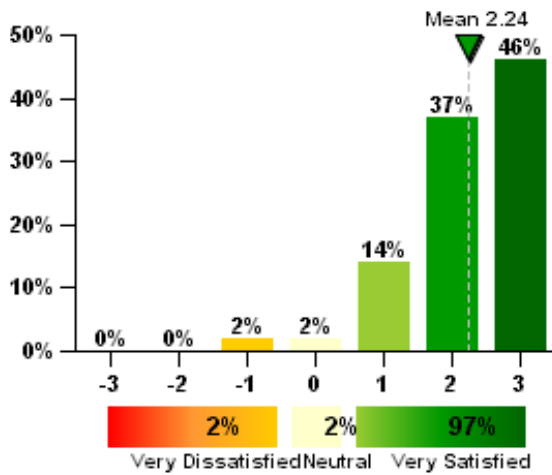
N=62

You have said that you are dissatisfied with the lighting in your workspace. Which of the following contribute to your dissatisfaction? (check all that apply)

Due to the limited number of responses to this question, its chart is not displayed

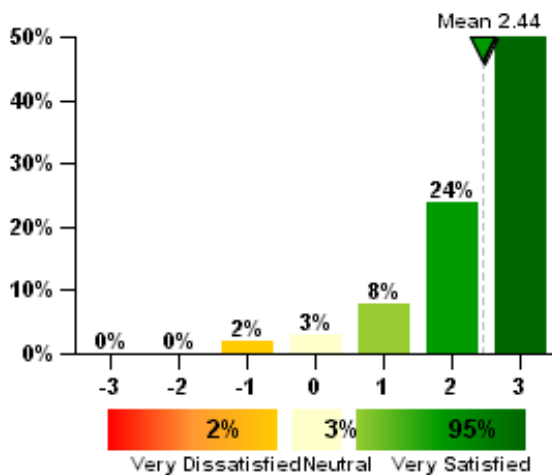
2.5 Office Furnishings

How satisfied are you with the comfort of your office furnishings (chair, desk, computer, equipment, etc.)?



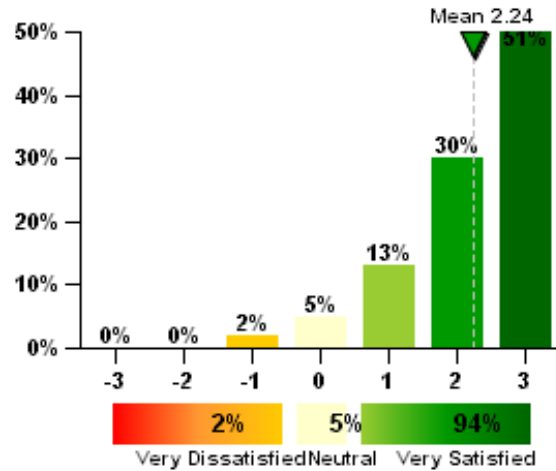
N=63

How satisfied are you with the colors and textures of flooring, furniture and surface finishes?



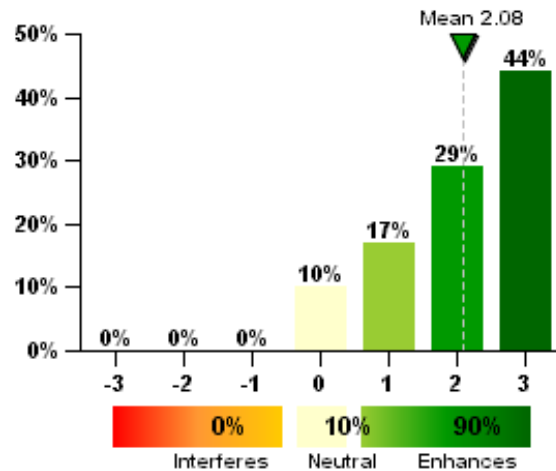
N=63

How satisfied are you with your ability to adjust your furniture to meet your needs?



N=63

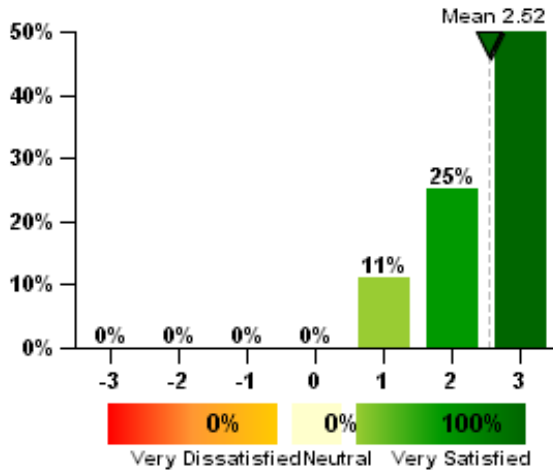
Do your office furnishings enhance or interfere with your ability to get your job done?



N=63

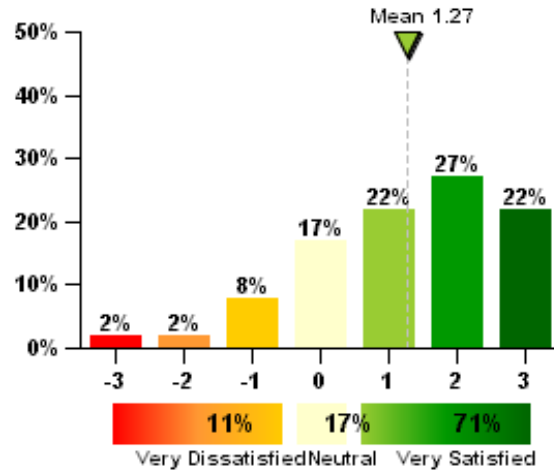
2.6 Office Layout

How satisfied are you with the amount of space available for individual work and storage?



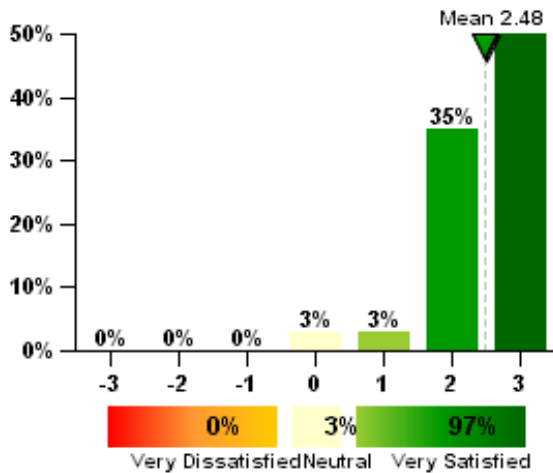
N=63

How satisfied are you with the level of visual privacy?



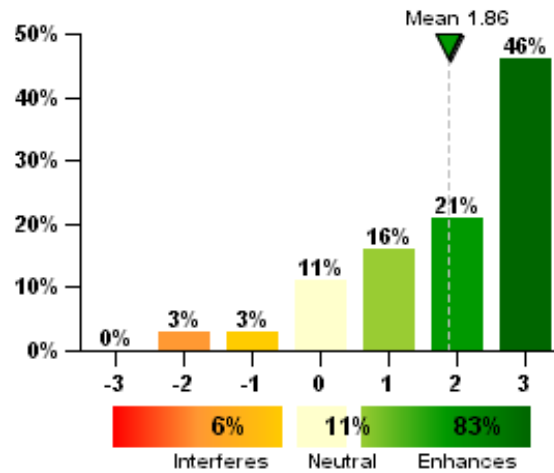
N=63

How satisfied are you with ease of interaction with co-workers?



N=62

Overall, does the office layout enhance or interfere with your ability to get your job done?



N=63

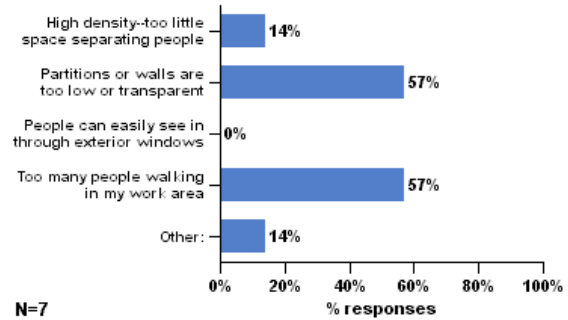
You have said that you are dissatisfied with the amount of space available for individual work and storage. Which of the following contribute to your dissatisfaction? (check all that apply)

Due to the limited number of responses to this question, its chart is not displayed

You have said that you are dissatisfied with the ease of interaction with co-workers. Which of the following contribute to your dissatisfaction? (check all that apply)

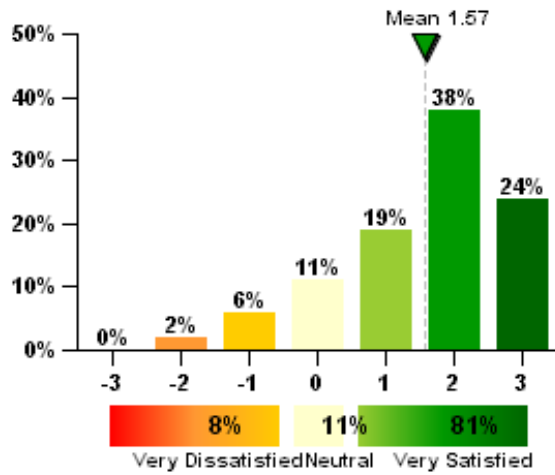
Due to the limited number of responses to this question, its chart is not displayed

You have said that you are dissatisfied with the level of visual privacy. Which of the following contribute to your dissatisfaction? (check all that apply)



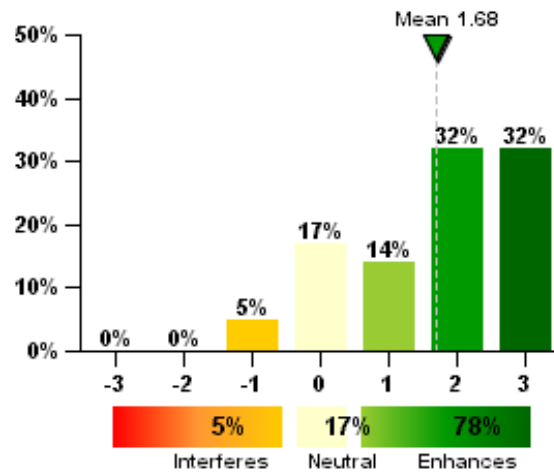
2.7 Thermal Comfort

How satisfied are you with the temperature in your workspace?



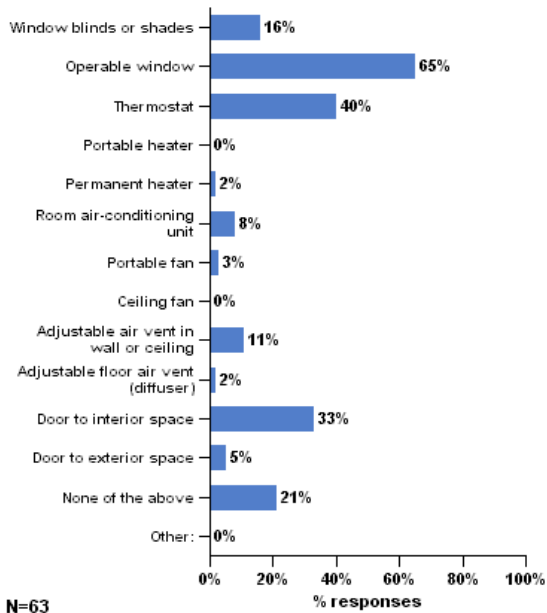
N=63

Overall, does your thermal comfort in your workspace enhance or interfere with your ability to get your job done?

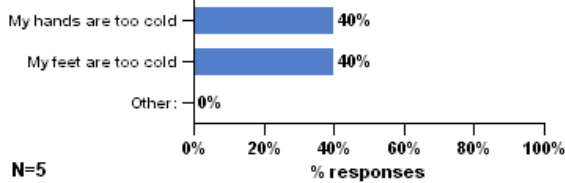


N=63

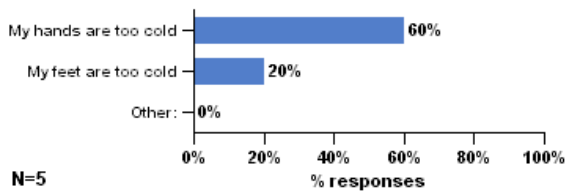
Which of the following do you personally adjust or control in your workspace? (check all that apply)



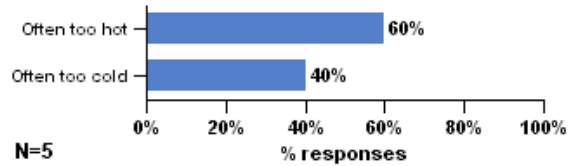
In warm/hot weather... (check all that apply)



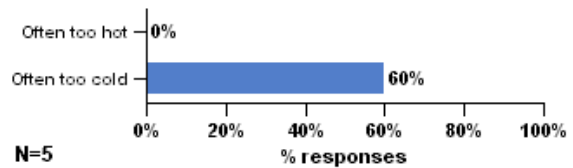
In cool/cold weather... (check all that apply)



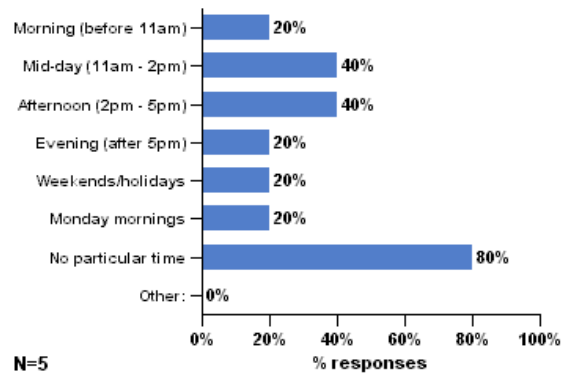
In warm/hot weather, the temperature in my workspace is: (check all that apply)



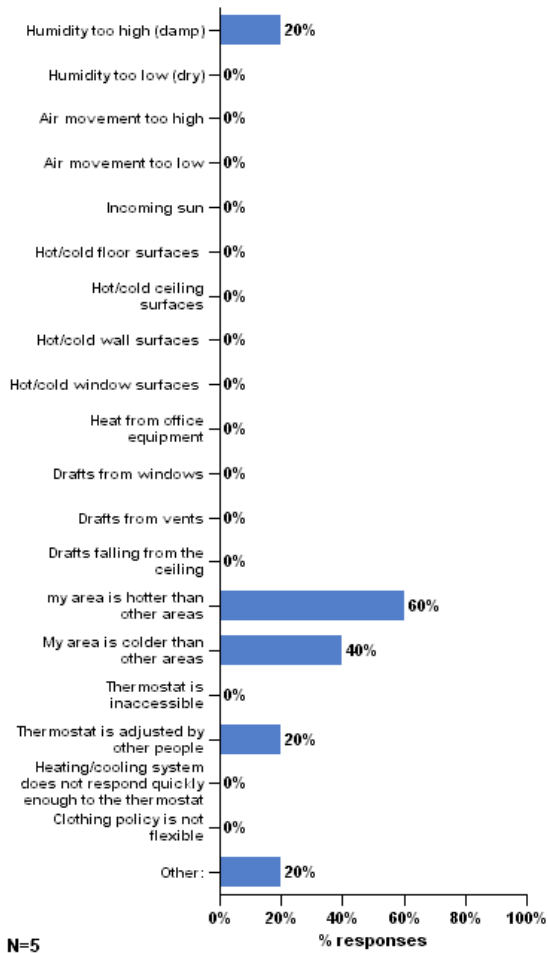
In cool/cold weather, the temperature in my workspace is: (check all that apply)



When is this most often a problem? (check all that apply)

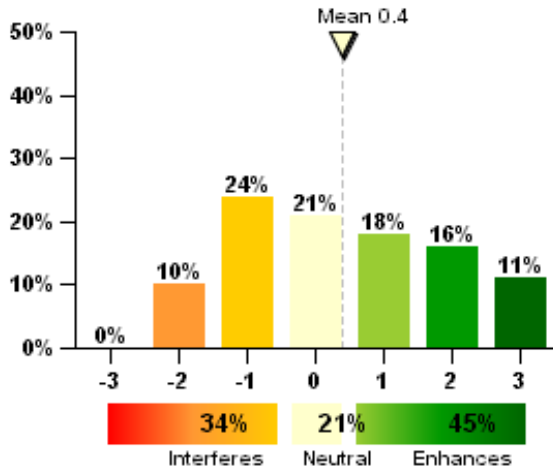


How would you best describe the source of this discomfort? (check all that apply)



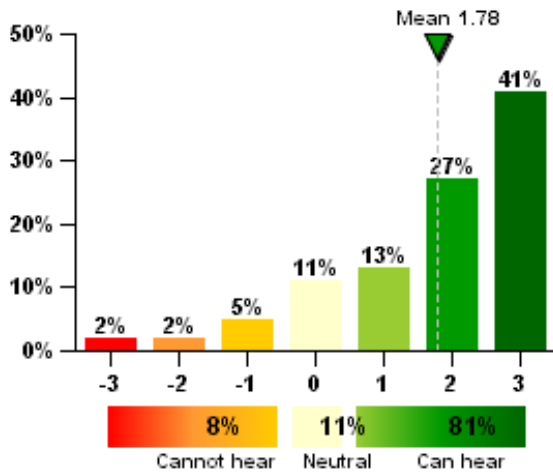
2.8 Acoustics Module

Overall, does the speech privacy in your workspace enhance or interfere with your ability to get your job done?



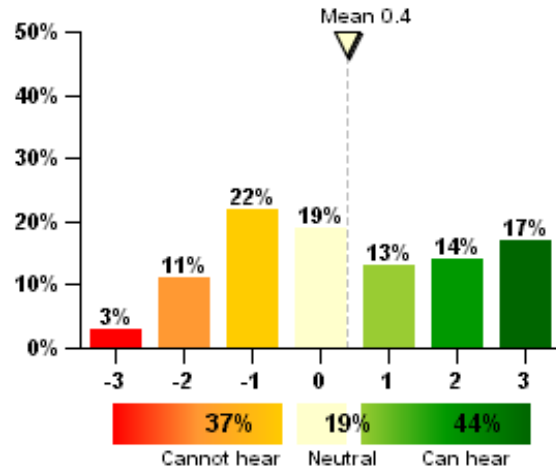
N=62

Ability to hear others : Actual



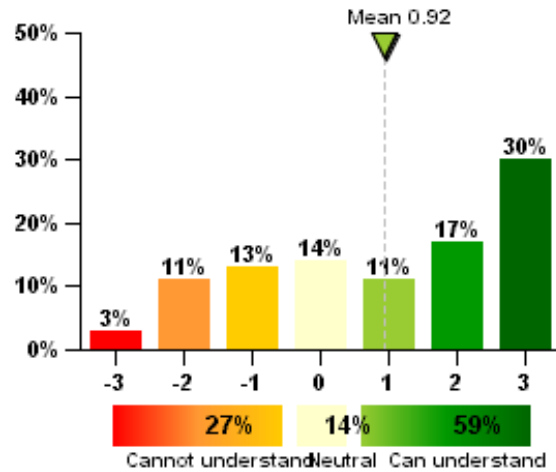
N=63

Ability to hear others : Expectation



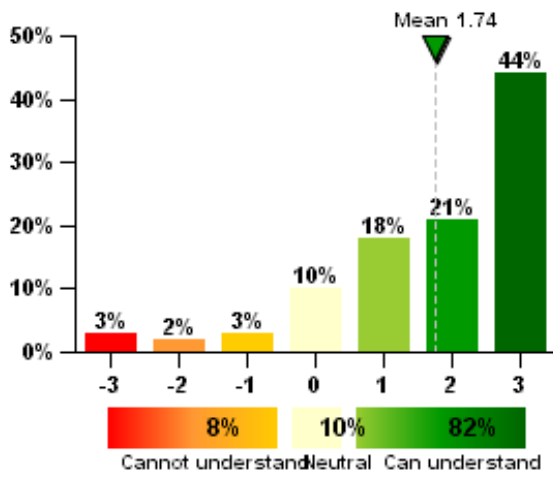
N=63

Ability to understand others : Expectation



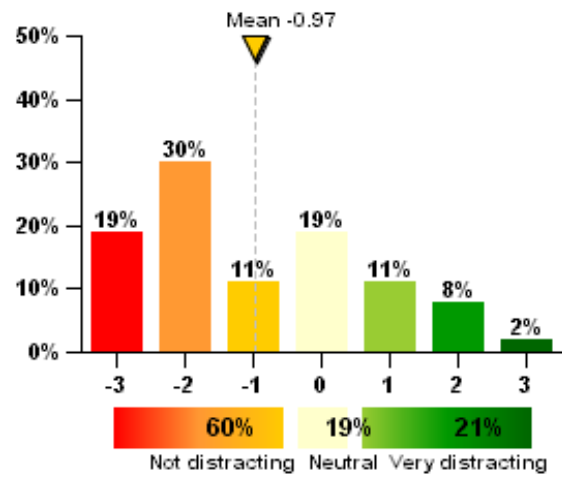
N=63

Ability to understand others : Actual



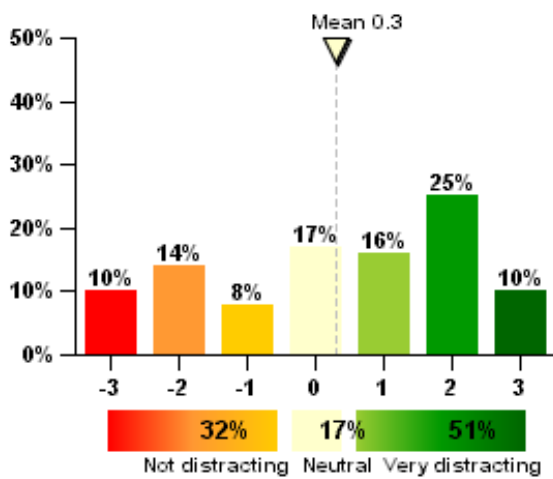
N=62

Level of distraction : Expectation



N=63

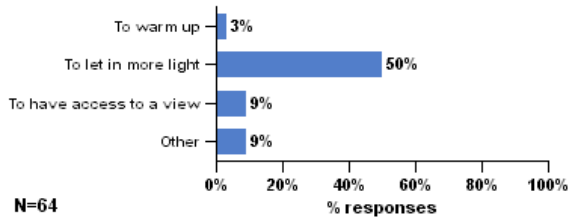
Level of distraction : Actual



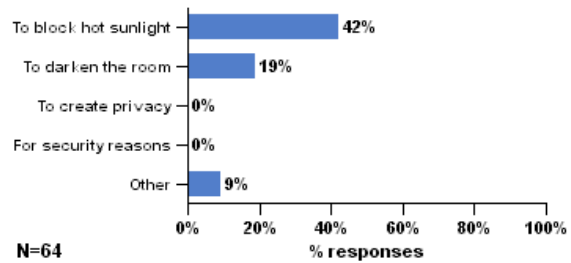
N=63

2.10 Blinds and Shades

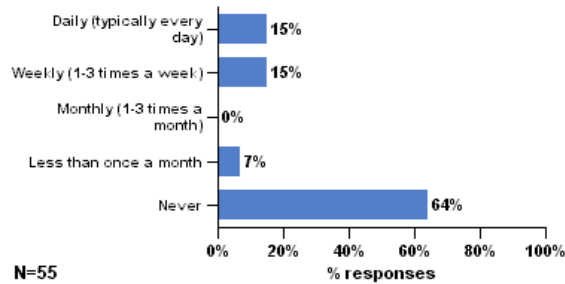
Of the reasons you checked above, which is the most common reason?



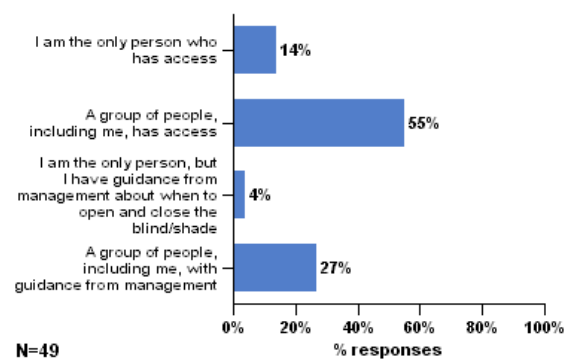
Of the reasons you checked above, which is the most common reason?



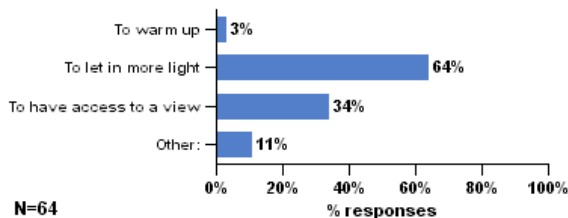
You indicated that you have access to a window blind or shade. How often to you open and close your blind/shade?



Who has access to open and close your blind/shade?



Below are reasons why someone might open a blind or shade. Please check all the reasons why you open the blind(s). (check all that apply)

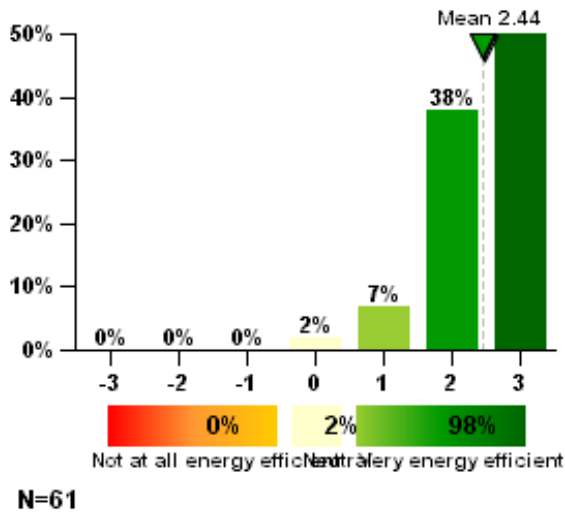


Below are reasons why someone might close a blind or shade. Please check all the reasons why you close the blind(s). (check all that apply)

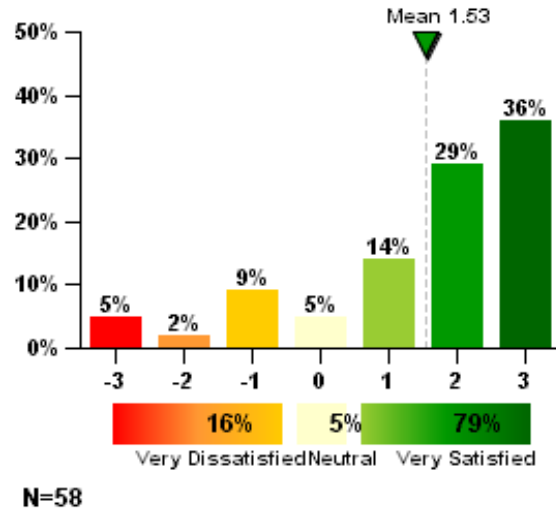


2.11 Building Features

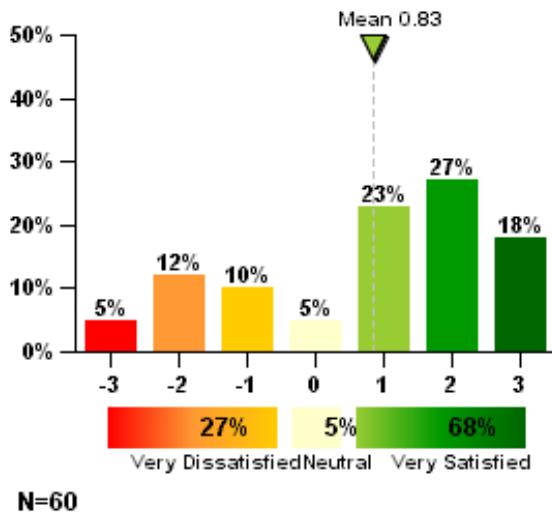
Considering energy use, how efficiently is this building performing in your opinion?



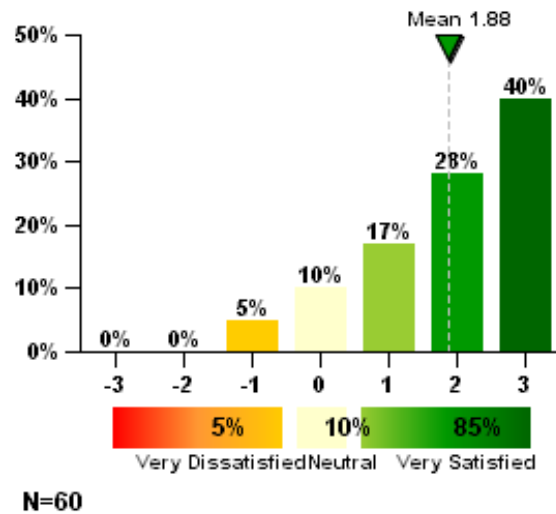
Automatic daylight controls



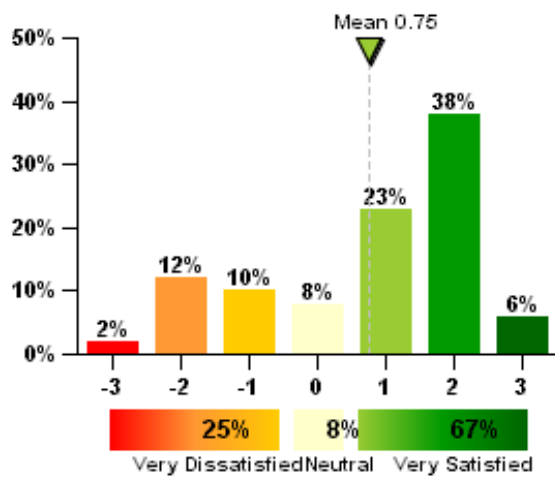
Low-flow toilets



Recycling systems

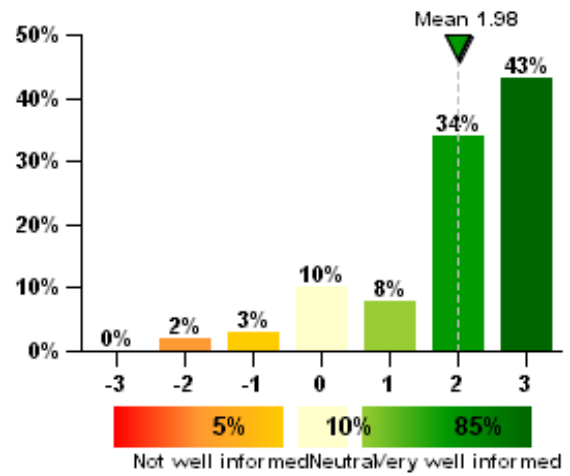


Exterior shades



N=48

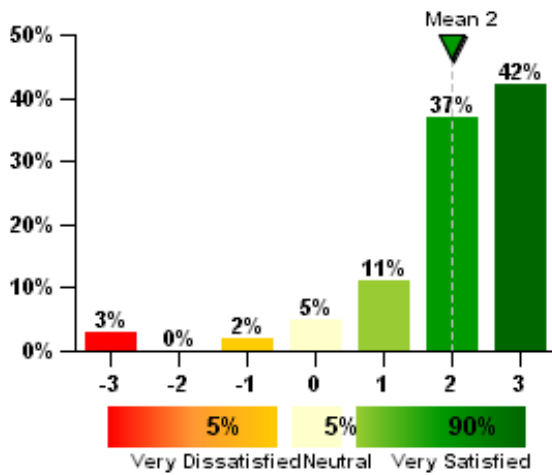
How well informed do you feel about using the above mentioned features in this building?



N=61

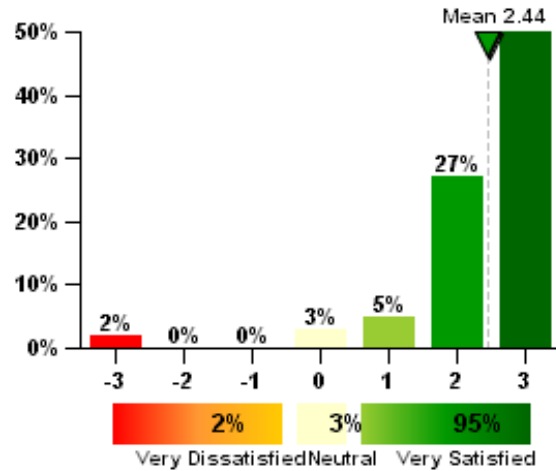
2.12 Building Grounds and Lobby

How satisfied are you with the design of the buildings exterior grounds, including its plazas, landscaping, and outside seating areas?



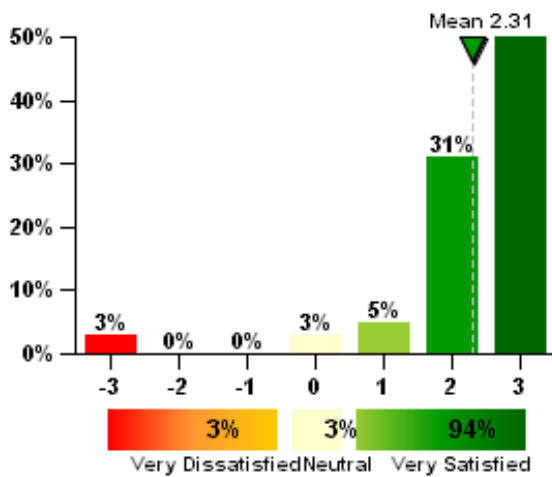
N=62

How satisfied are you with the appearance of the public spaces within the building?



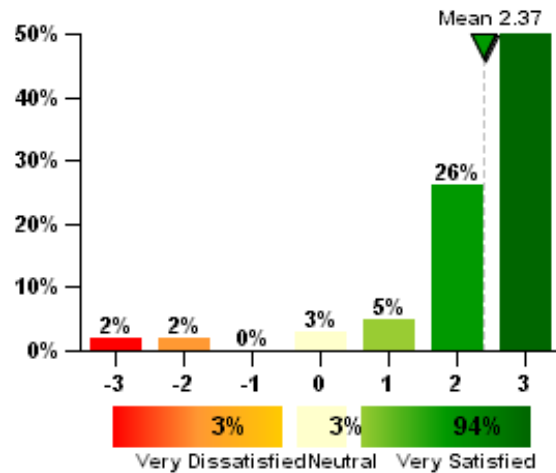
N=62

How satisfied are you with the functionality of the main entry lobby of the building?



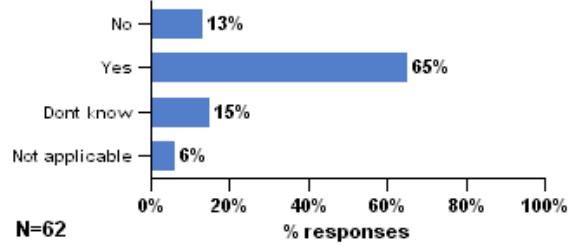
N=62

How satisfied are you with the artwork in or around the building?



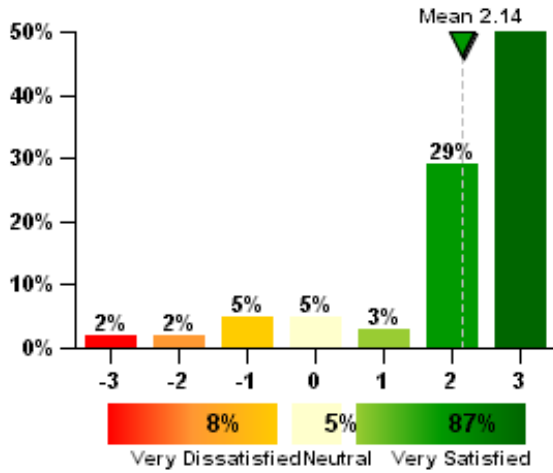
N=62

Have you received any printed materials or read any informational signage that helps you interpret the form and meaning of the artwork?



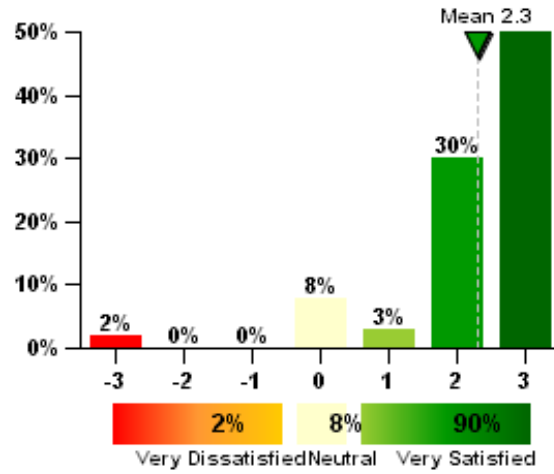
2.13 Conference and Training Rooms

How satisfied are you with the availability of conference rooms when you need them?



N=63

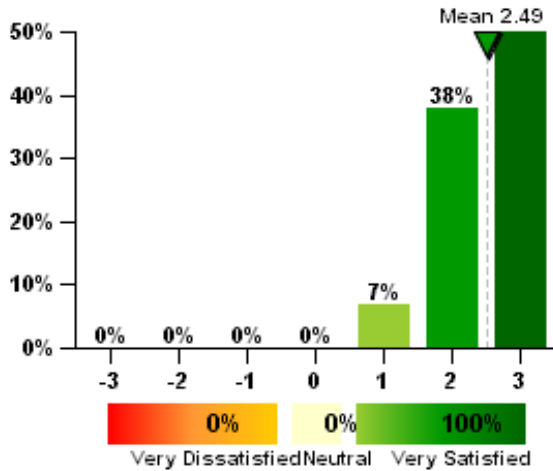
How satisfied are you with the functionality of the conference and/or training rooms in the building?



N=63

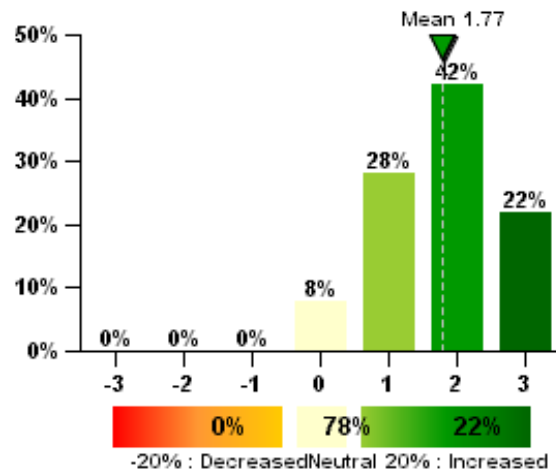
2.15 General Comments

All things considered, how satisfied are you with your personal workspace?



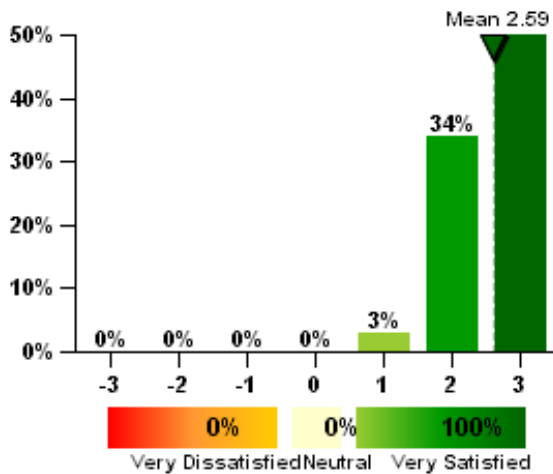
N=61

Please estimate how your productivity is increased or decreased by the environmental conditions in this building (e.g. thermal, lighting, acoustics, cleanliness):



N=60

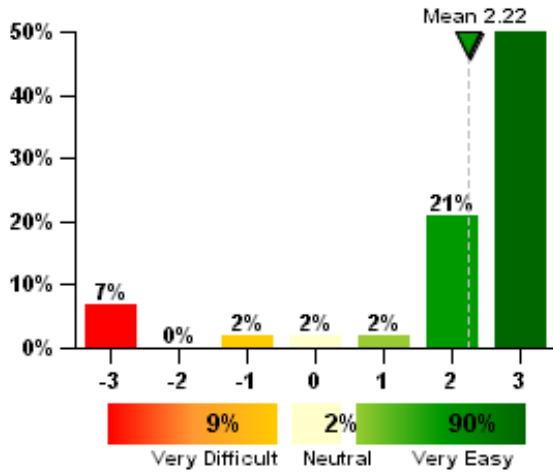
How satisfied are you with the building overall?



N=61

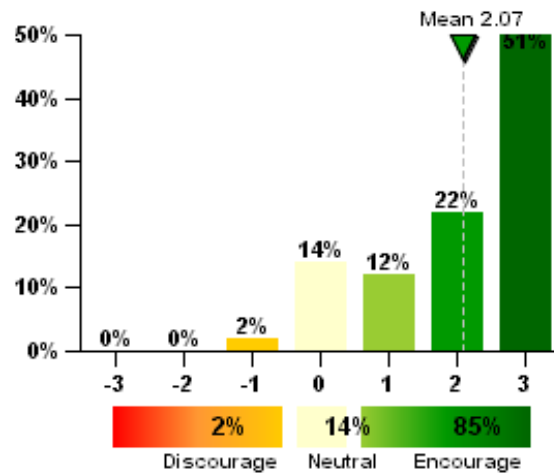
2.16 Operable Windows

How easy is it for you to open or close the window in your workspace?



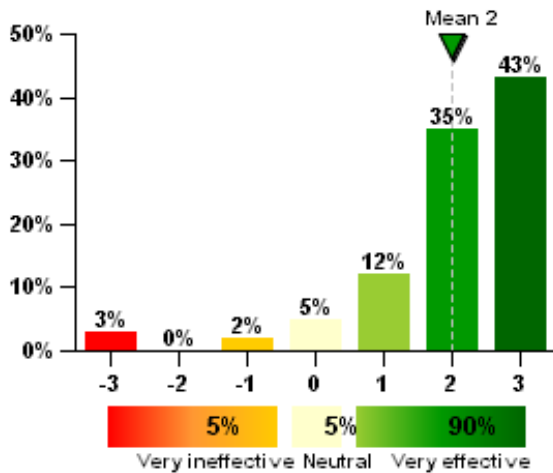
N=58

To what degree does the building management encourage or discourage the use of operable windows?



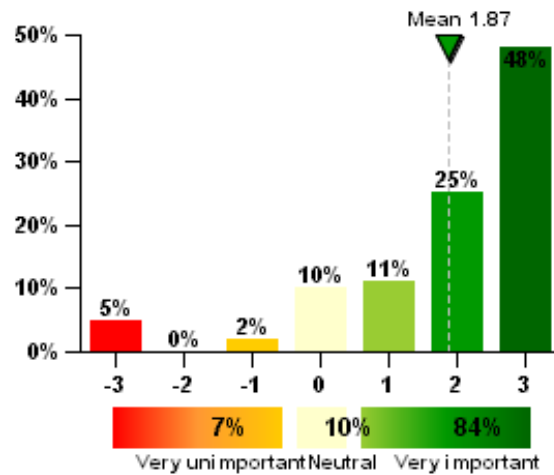
N=59

Overall, how effective is opening your window in helping you stay comfortable?



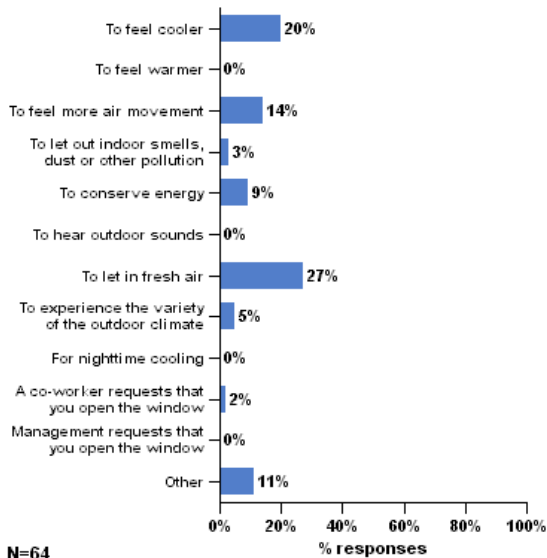
N=60

How important is it for you to have an operable window in your workspace?

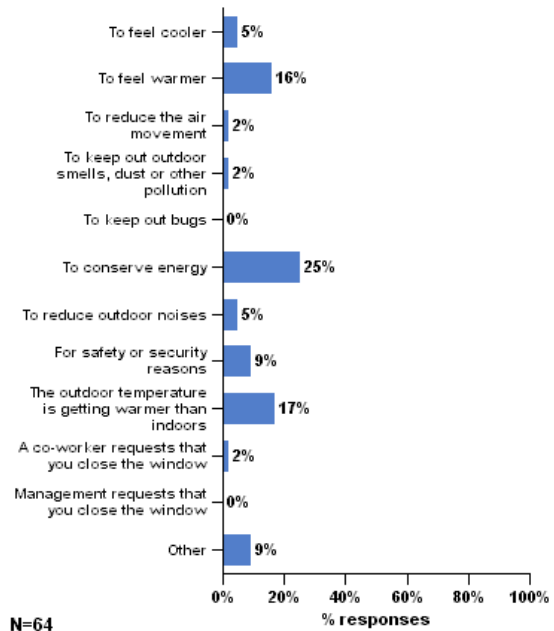


N=61

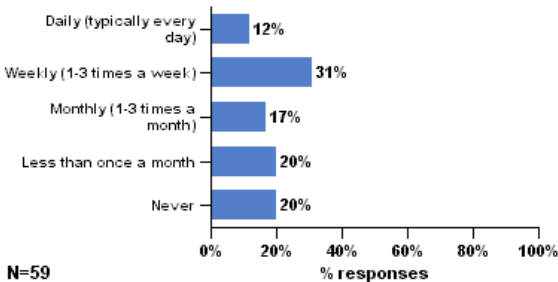
Of the reasons you checked above, which is the most common reason why you open your window(s) in your workspace in warm/hot weather.



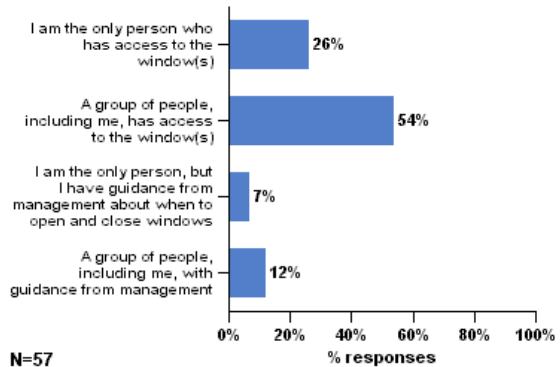
Of the reasons you checked above, which is the most common reason why you close the window(s) in your workspace in warm/hot weather.



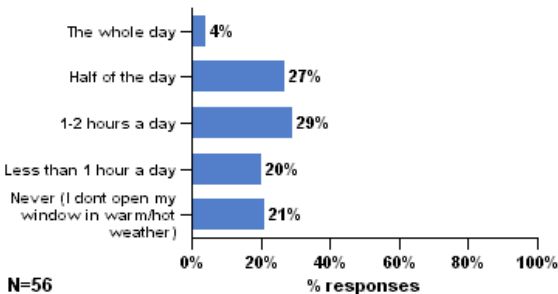
In warm/hot weather, how often do you typically adjust your window?



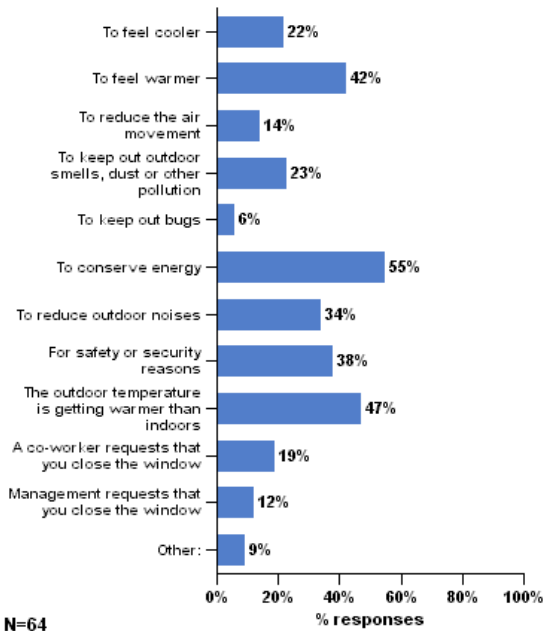
Who has access to open and close your window(s)?



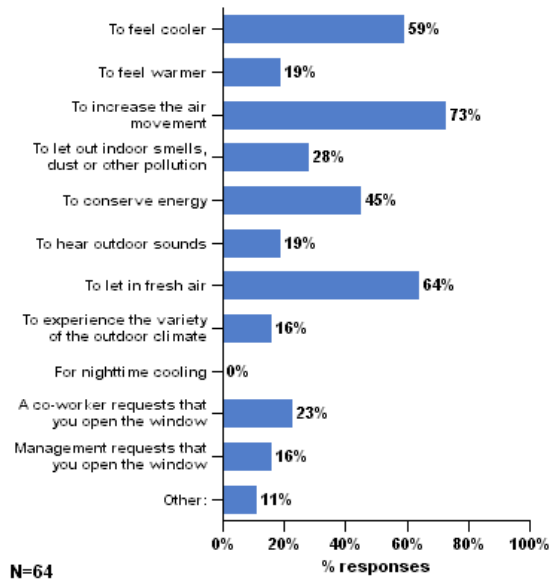
Approximately how much time during the day is your window typically open?



Below is a list of reasons why someone might close a window. Please identify all the reasons why you close the window(s) in your workspace in warm/hot weather. (check all that apply)

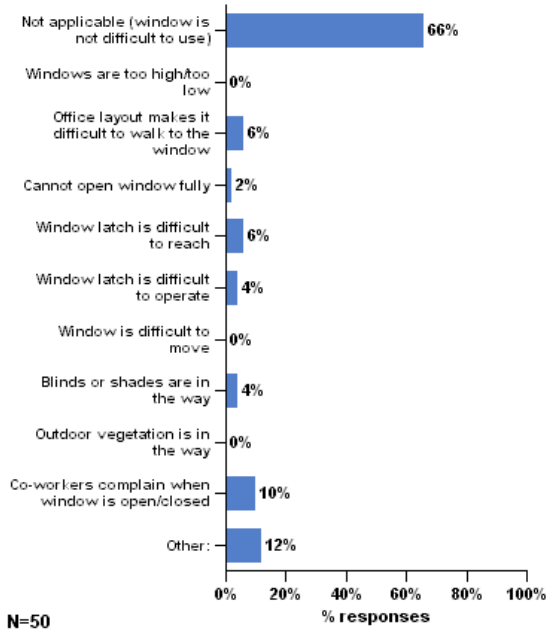


Below is a list of reasons why someone might open a window. Please identify all the reasons why you open the window(s) in your workspace in warm/hot weather. (check all that apply)



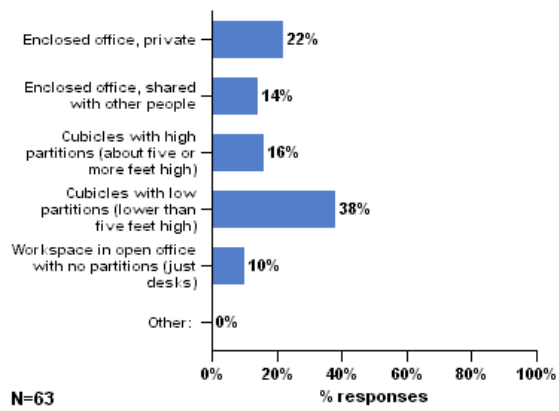
2.17 Personal Workspace Adjustability

If it is difficult for you to use the window in your workspace, what factors contribute to this problem? (check all that apply)



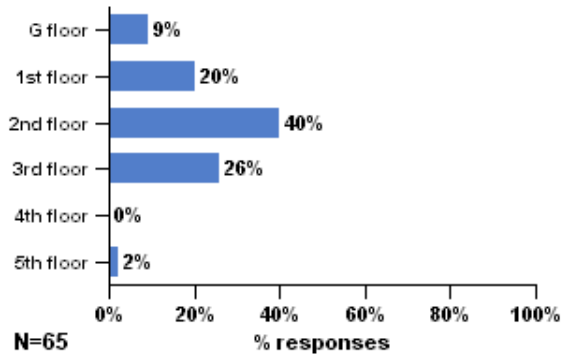
2.18 Personal Workspace Description

Which of the following best describes your personal workspace?

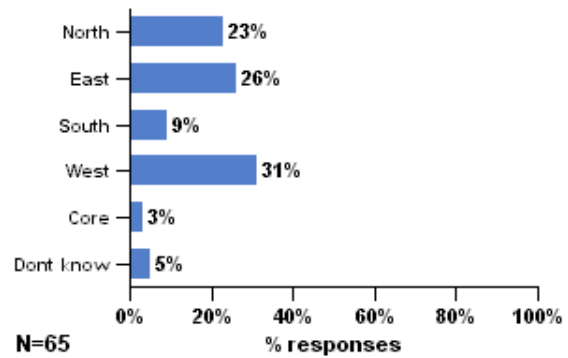


2.19 Personal Workspace Location

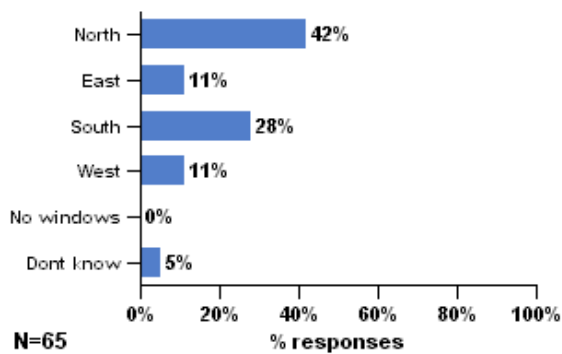
On which floor is your workspace located?



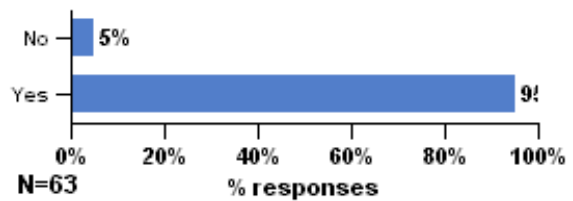
In which area of the building is your workspace located?



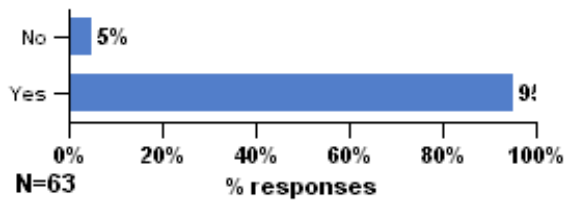
To which direction do the windows closest to your workspace face?



Are you near an exterior wall (within 15 feet)?

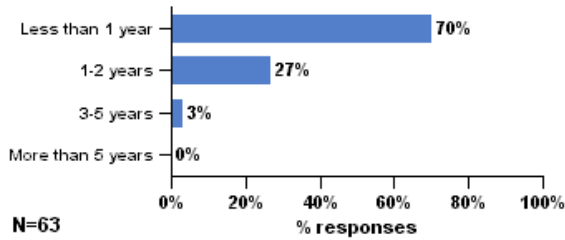


Are you near a window (within 15 feet)?

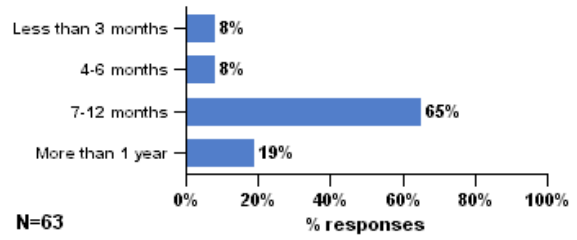


3.1 Background

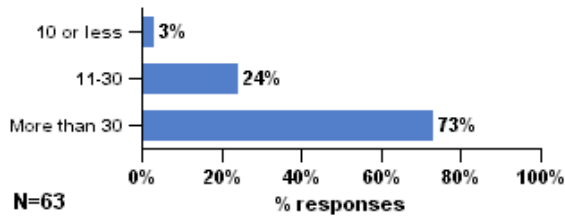
How many years have you worked in this building?



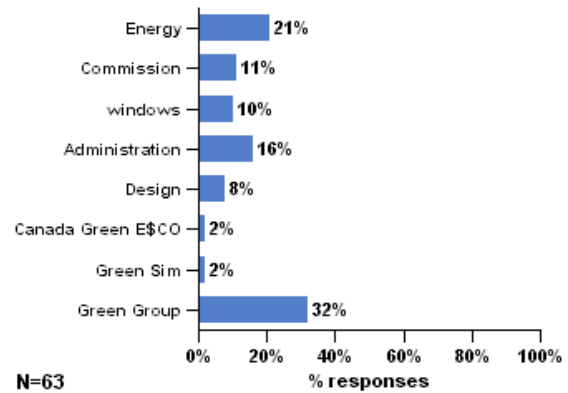
How long have you been working at your present workspace?



In a typical week, how many hours do you spend in your workspace?



What is your department?



How would you describe the work you do?

