

# David and Lucile Packard Foundation

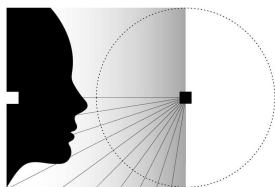
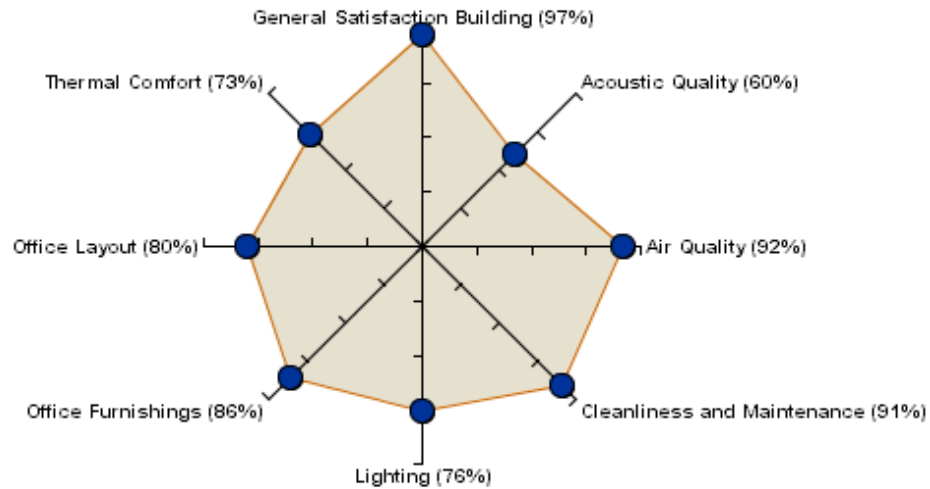
## Occupant Survey Report

Survey Dates: 4/17/2013 through 4/28/2013

Center for the Built Environment

University of California, Berkeley

### Satisfaction in Core Survey Categories



C B E

## 1.1 How to Use This Report

This report contains a lot of detail about this building. You can use this report in different ways depending on the level of detail you need. The first section, the executive summary, is a high-level overview of the building's performance. It contains basic metrics by category. Read this section if you need a general understanding of the building's performance or its relationship to other buildings. This section answers 'how.' How is the building performing from the occupants' perspective.

Section two contains information at the question level. Here you can get specific information about the drivers behind the building's score in a particular category. You can also find information about occupant responses to a particular question. This section answers 'what.' What is contributing to this level of perceived performance?

Section three contains information from and about the occupants. This is where you look for demographic information and information about how occupants use the building. You can also find comments from occupants in this section. This section answers 'who.' Who is using the building?

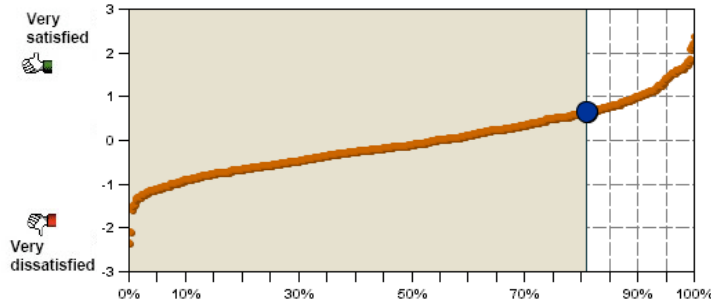
One of the most powerful uses of this report is diagnostic. The survey report gives you information about what's going right (or not so right) in your building. With this information you can make informed decisions about how to improve your buildings performance.

## 1.2 Building Scorecard

Performance of David and Lucile Packard Foundation in core survey categories

**Acoustic  
Quality**

**81%**  
Percentile

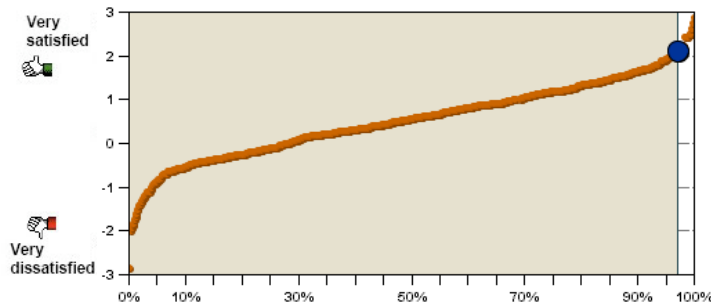


**0.67**  
Mean Response

**60%**  
Satisfied

**Air Quality**

**97%**  
Percentile

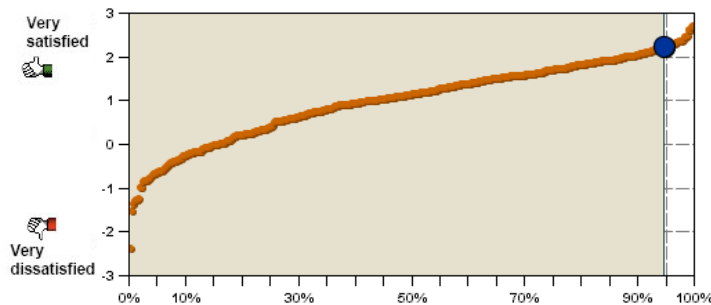


**2.12**  
Mean Response

**92%**  
Satisfied

**Cleanliness  
and  
Maintenance**

**95%**  
Percentile

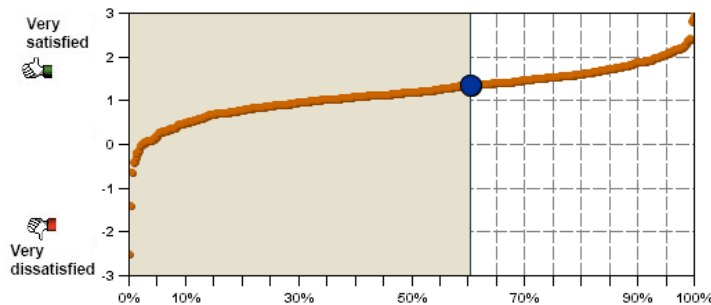


**2.25**  
Mean Response

**91%**  
Satisfied

**Lighting**

**60%**  
Percentile



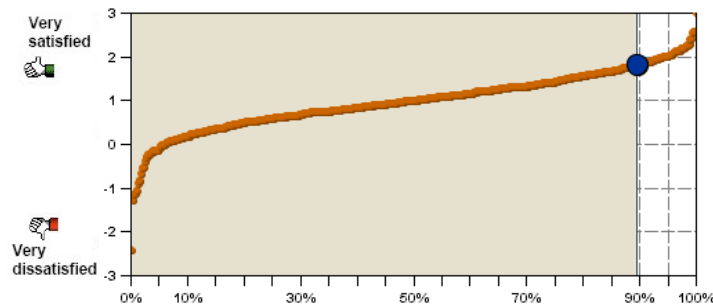
**1.36**  
Mean Response

**76%**  
Satisfied

## Performance of David and Lucile Packard Foundation in core survey categories

### Office Furnishings

89%  
Percentile

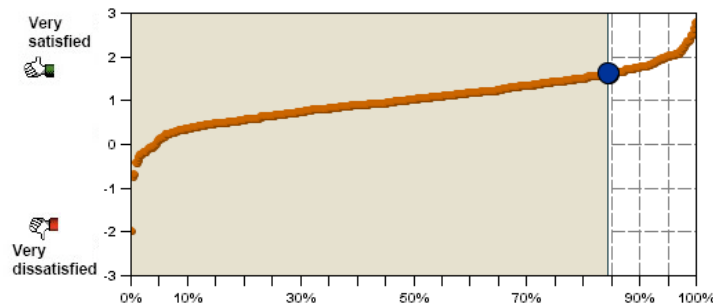


1.84  
Mean Response

86%  
Satisfied

### Office Layout

84%  
Percentile

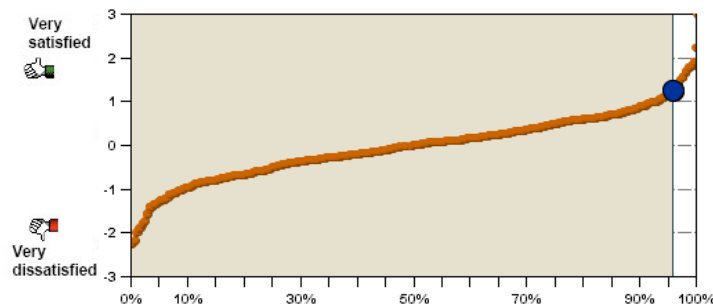


1.63  
Mean Response

80%  
Satisfied

### Thermal Comfort

96%  
Percentile



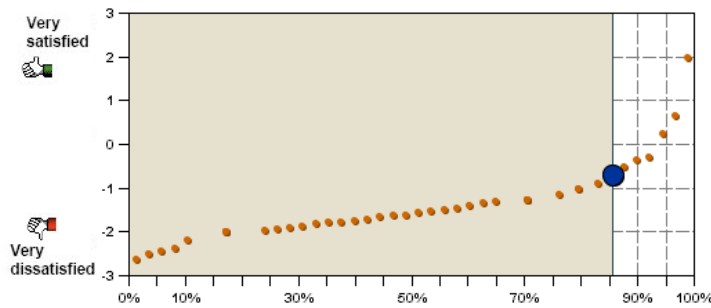
1.27  
Mean Response

73%  
Satisfied

# Performance of David and Lucile Packard Foundation in additional survey categories

## Daylight

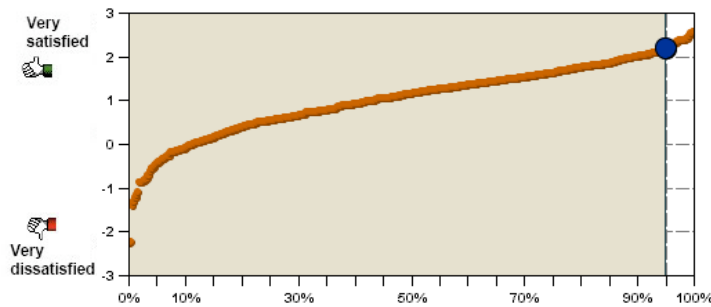
86%  
Percentile



-0.7  
Mean Response  
20%  
Satisfied

## General Satisfaction-Building

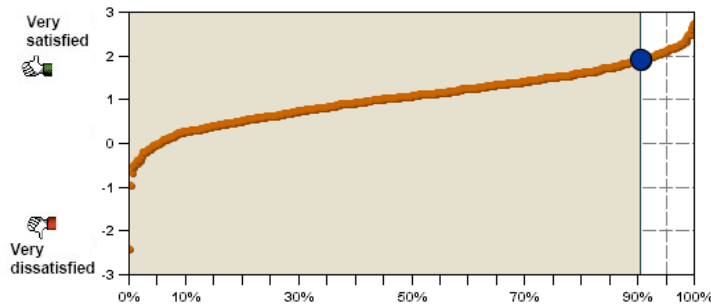
95%  
Percentile



2.2  
Mean Response  
97%  
Satisfied

## General Satisfaction-Workspace

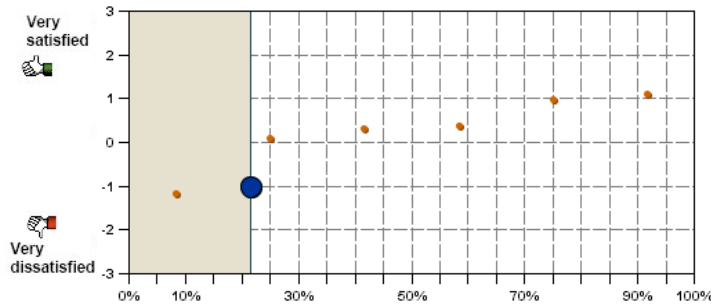
91%  
Percentile



1.93  
Mean Response  
93%  
Satisfied

## Glare

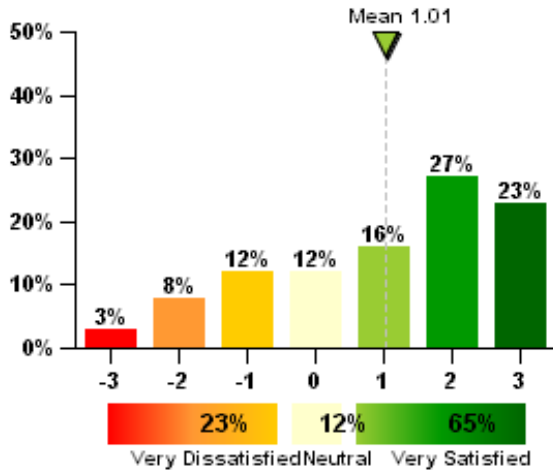
21%  
Percentile



-1  
Mean Response  
18%  
Satisfied

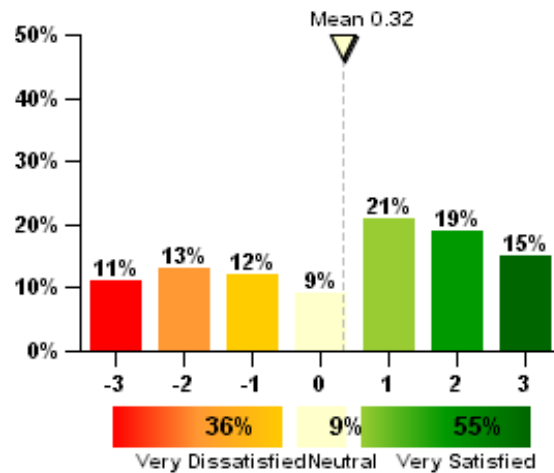
## 2.1 Acoustic Quality

How satisfied are you with the noise level in your workspace?



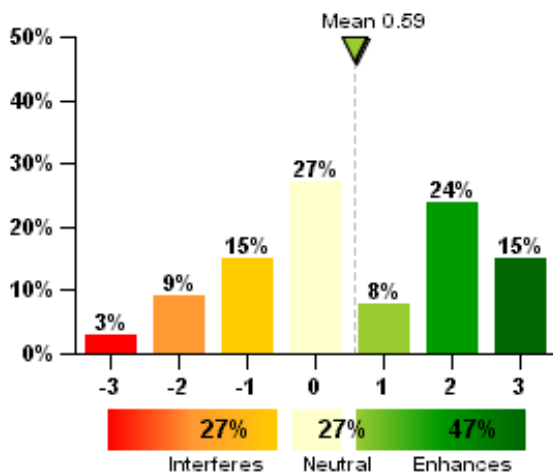
N=75

How satisfied are you with the sound privacy in your workspace (ability to have conversations without your neighbors overhearing and vice versa)?



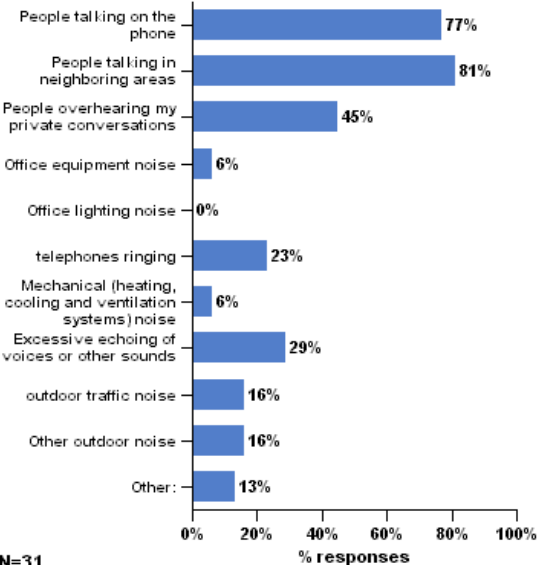
N=75

Overall, does the acoustic quality in your workspace enhance or interfere with your ability to get your job done?



N=75

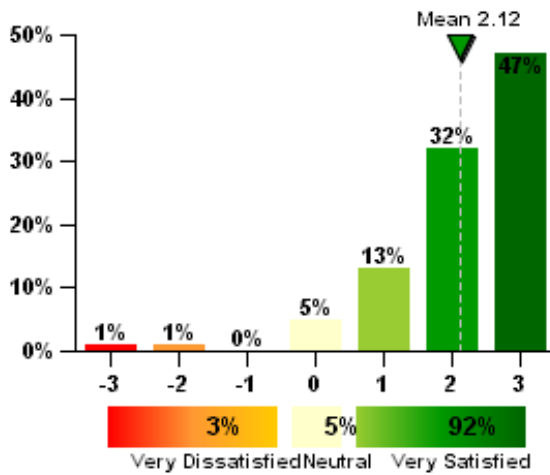
You have said you are dissatisfied with the acoustics in your workspace. Which of the following contribute to this problem? (check all that apply)



**N=31**

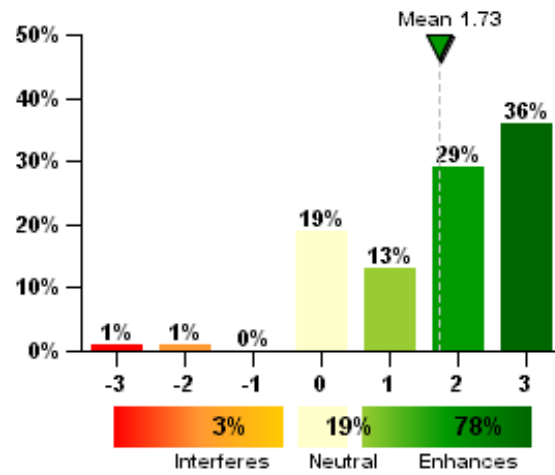
## 2.2 Air Quality

How satisfied are you with the air quality in your workspace (i.e. stuffy/stale air, cleanliness, odors)?



N=77

Overall, does the air quality in your workspace enhance or interfere with your ability to get your job done?

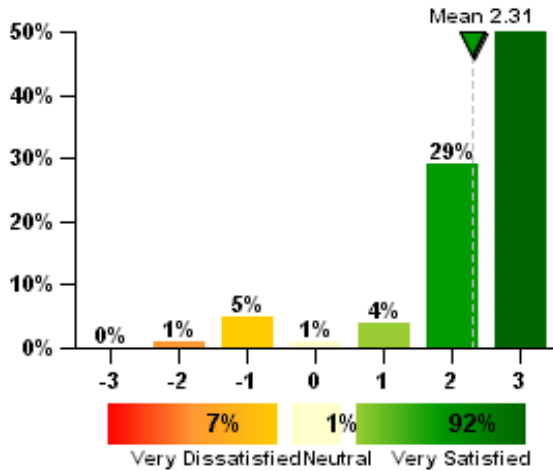


N=77



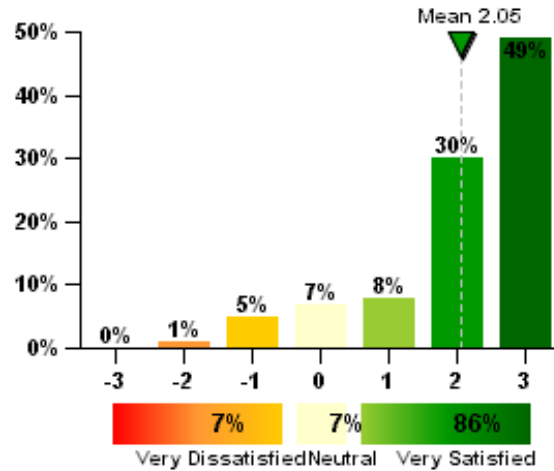
## 2.3 Cleanliness and Maintenance

How satisfied are you with general cleanliness of the overall building?



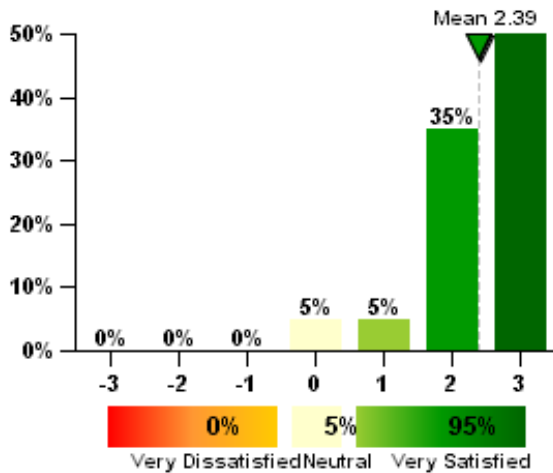
N=75

How satisfied are you with cleaning service provided for your workspace?



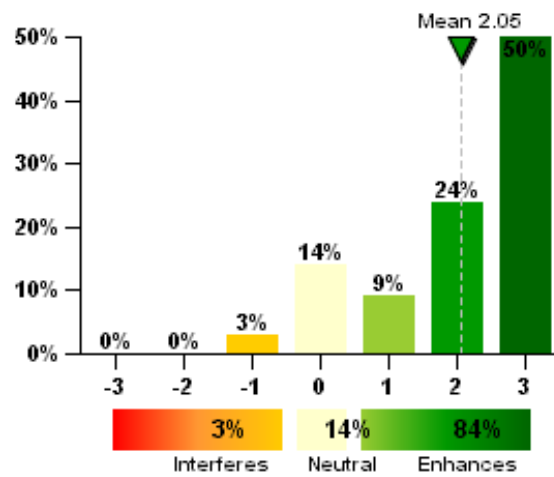
N=74

How satisfied are you with general maintenance of the building?



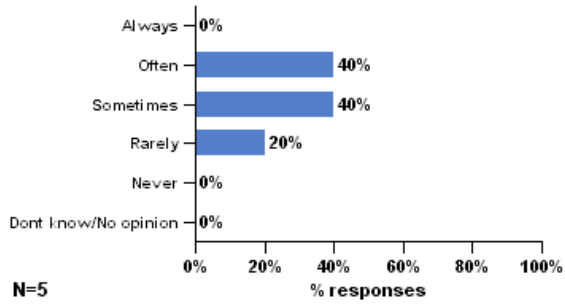
N=75

Does the cleanliness and maintenance of this building enhance or interfere with your ability to get your job done?

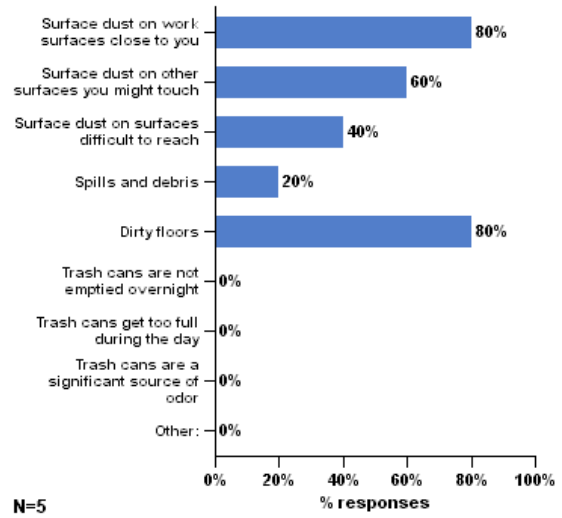


N=74

You have told us that you are dissatisfied with the cleaning service provided for your workspace. How often do you have significant problems?

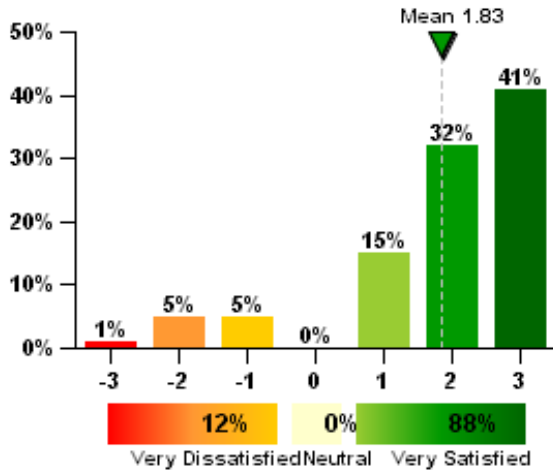


Which of the following contribute to this dissatisfaction? (check all that apply)



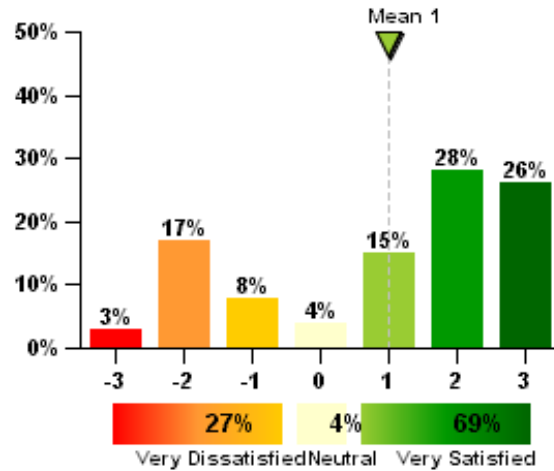
## 2.4 Lighting

How satisfied are you with the amount of daylight in your workspace?



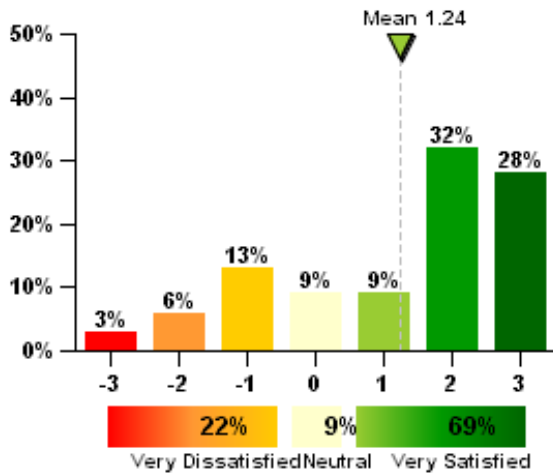
N=78

How satisfied are you with the amount of electric light in your workspace?



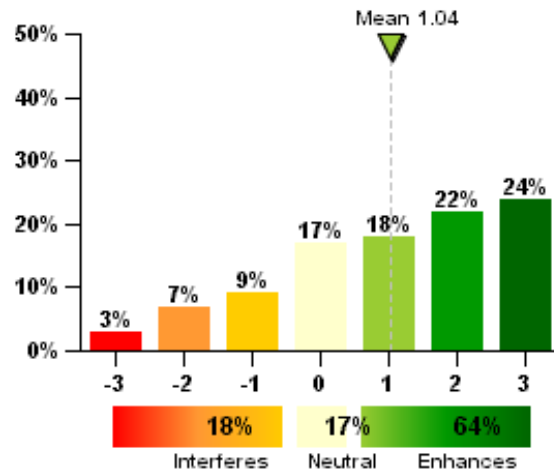
N=78

How satisfied are you with the glare in your workspace?



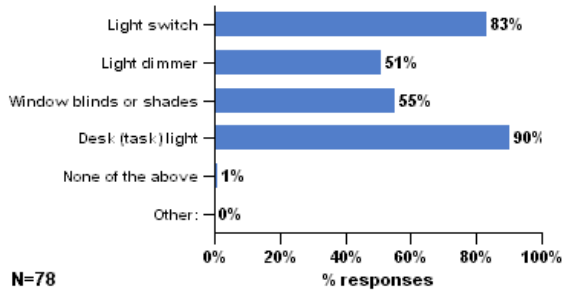
N=78

Overall, does the lighting quality enhance or interfere with your ability to get your job done?



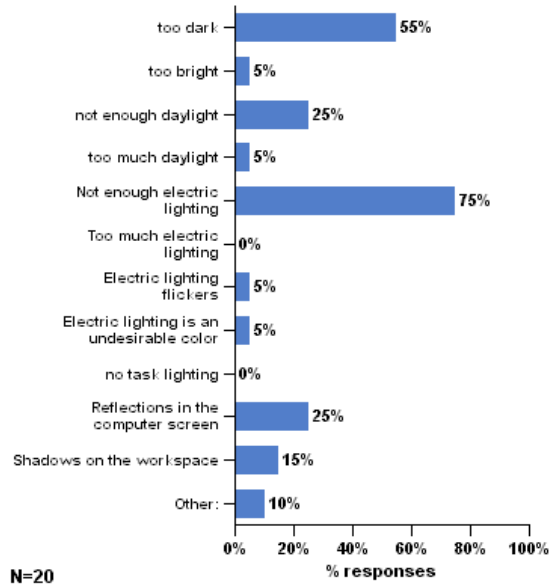
N=76

Which of the following controls do you have over the lighting in your workspace? (check all that apply)



N=78

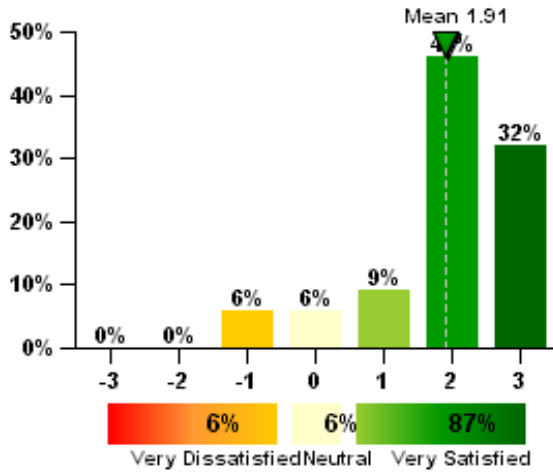
You have said that you are dissatisfied with the lighting in your workspace. Which of the following contribute to your dissatisfaction? (check all that apply)



N=20

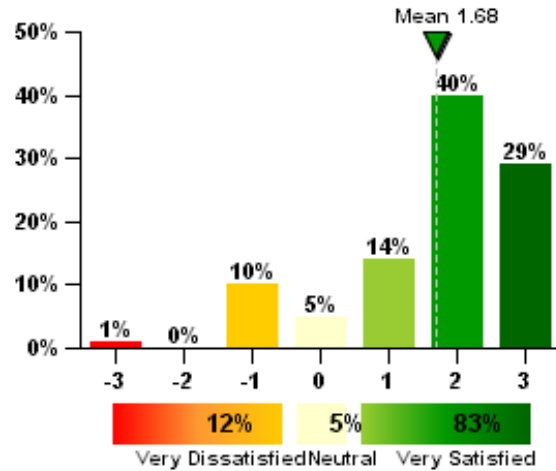
## 2.5 Office Furnishings

How satisfied are you with the comfort of your office furnishings (chair, desk, computer, equipment, etc.)?



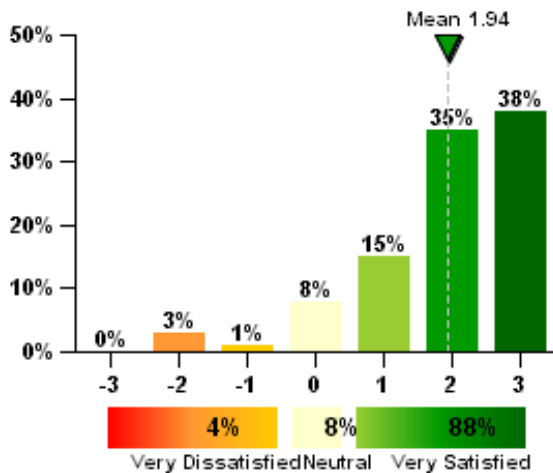
N=78

How satisfied are you with your ability to adjust your furniture to meet your needs?



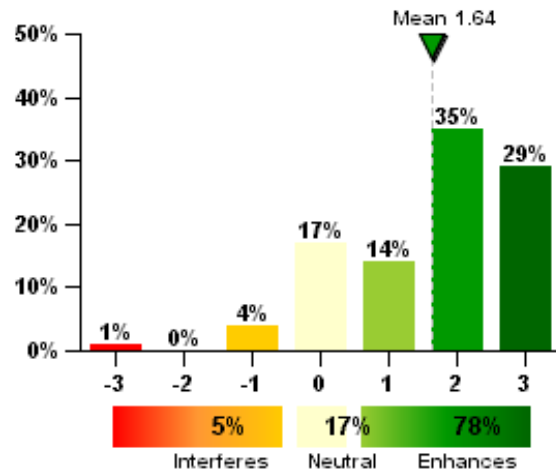
N=78

How satisfied are you with the colors and textures of flooring, furniture and surface finishes?



N=78

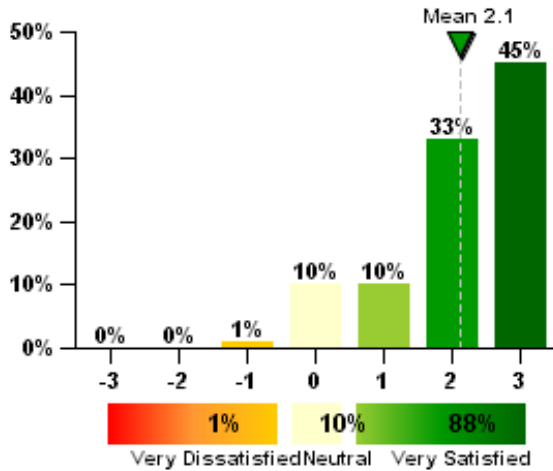
Do your office furnishings enhance or interfere with your ability to get your job done?



N=78

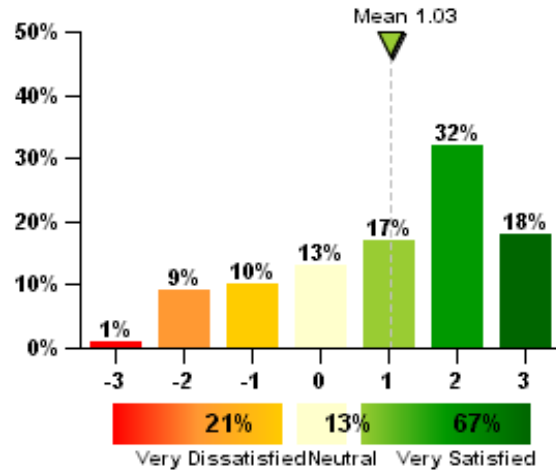
## 2.6 Office Layout

How satisfied are you with the amount of space available for individual work and storage?



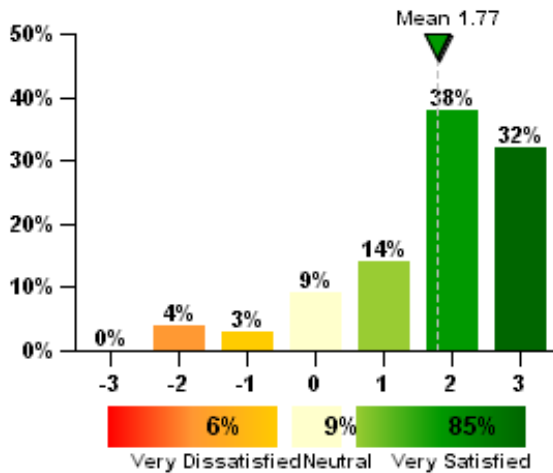
N=78

How satisfied are you with the level of visual privacy?



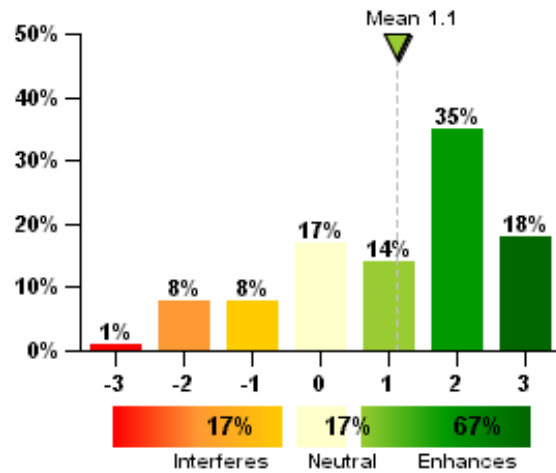
N=78

How satisfied are you with ease of interaction with co-workers?



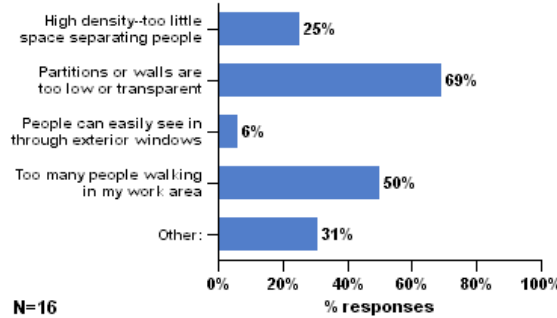
N=78

Overall, does the office layout enhance or interfere with your ability to get your job done?



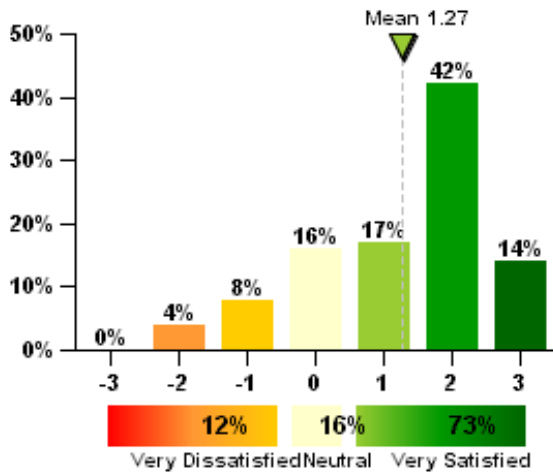
N=78

You have said that you are dissatisfied with the level of visual privacy. Which of the following contribute to your dissatisfaction? (check all that apply)



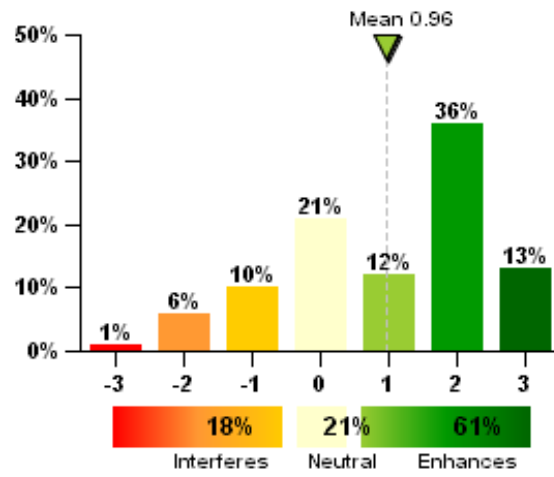
## 2.7 Thermal Comfort

How satisfied are you with the temperature in your workspace?



N=77

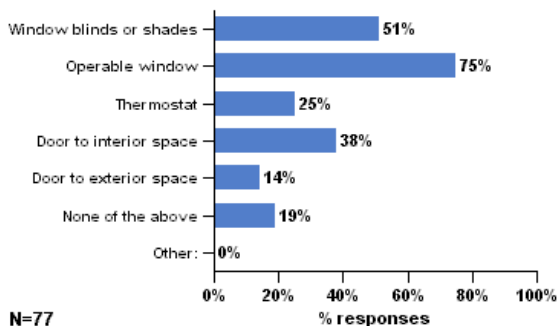
Overall, does your thermal comfort in your workspace enhance or interfere with your ability to get your job done?



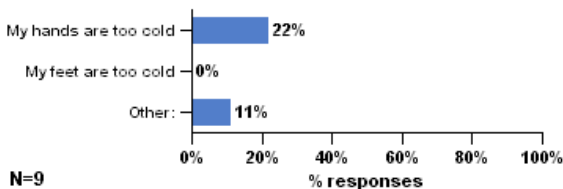
N=77



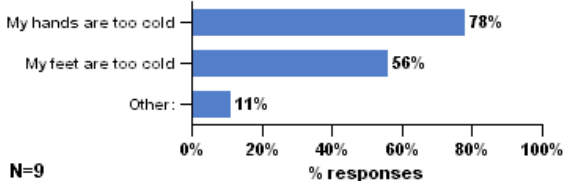
Which of the following do you personally adjust or control in your workspace? (check all that apply)



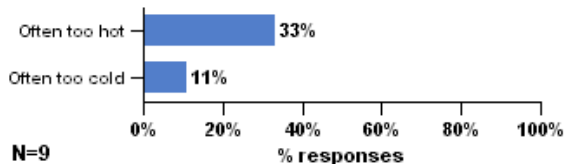
In warm/hot weather... (check all that apply)



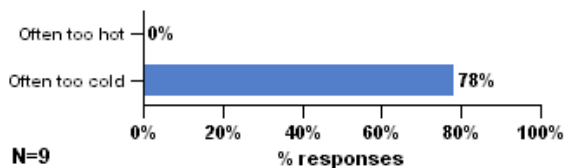
In cool/cold weather... (check all that apply)



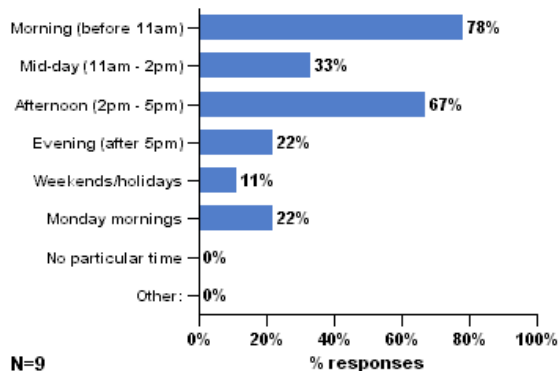
In warm/hot weather, the temperature in my workspace is: (check all that apply)



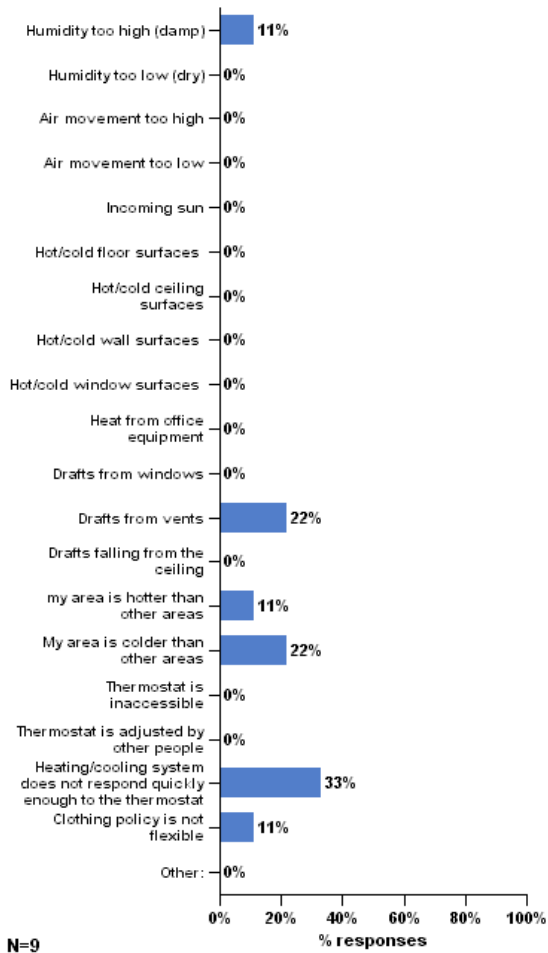
In cool/cold weather, the temperature in my workspace is: (check all that apply)



When is this most often a problem? (check all that apply)

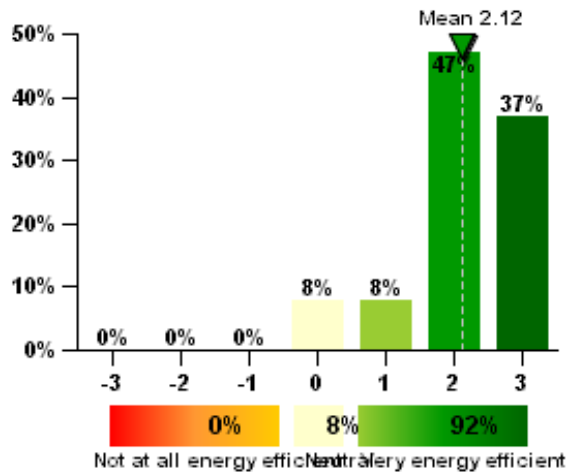


How would you best describe the source of this discomfort? (check all that apply)



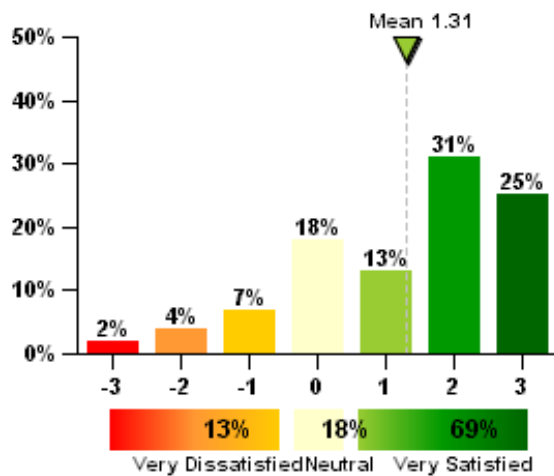
## 2.8 Building Features

Considering energy use, how efficiently is this building performing in your opinion?



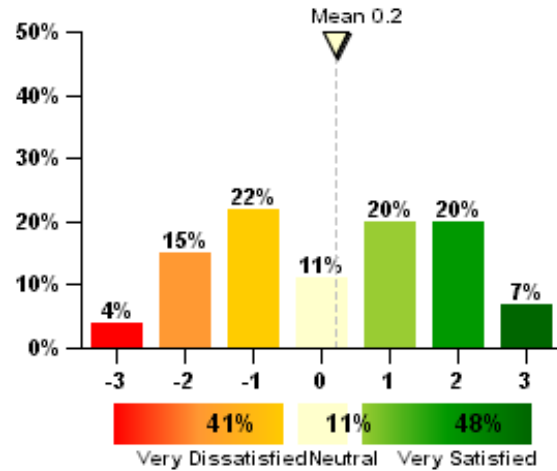
N=73

Automatic daylight controls



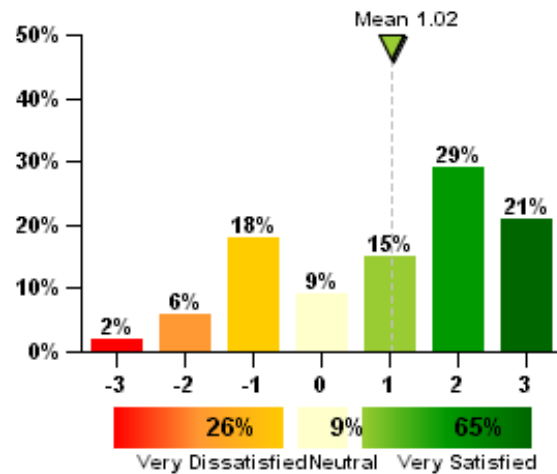
N=55

Thermostats



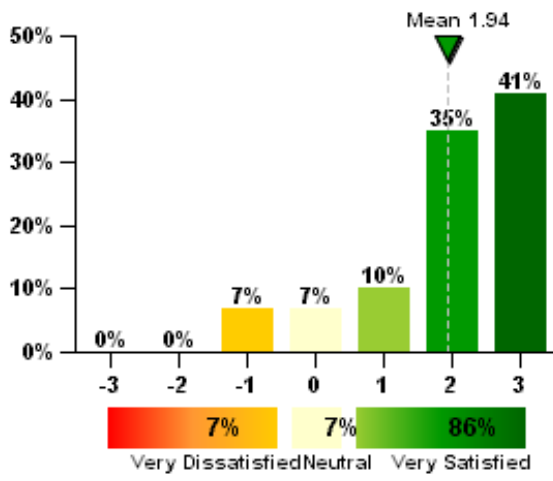
N=54

Window blinds



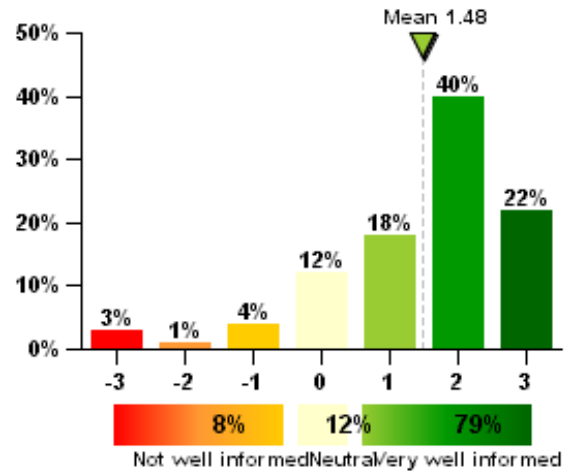
N=66

Private meeting rooms



N=69

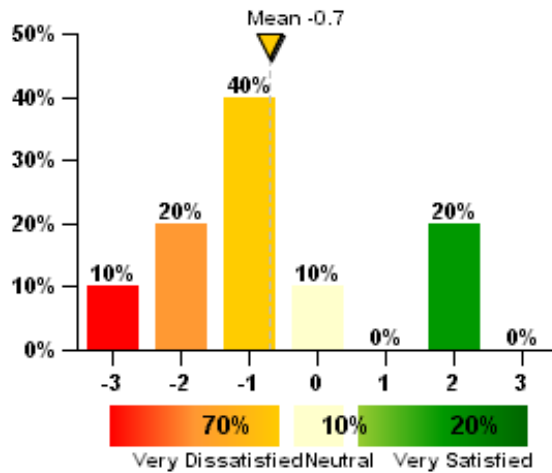
How well informed do you feel about using the above mentioned features in this building?



N=73

## 2.9 Daylight

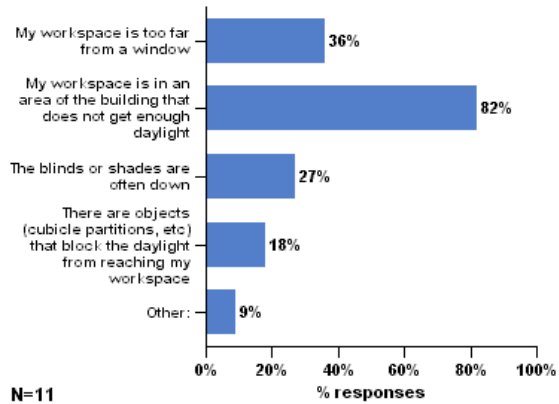
How satisfied are you with your ability to control the amount of daylight in your workspace?



**N=10**

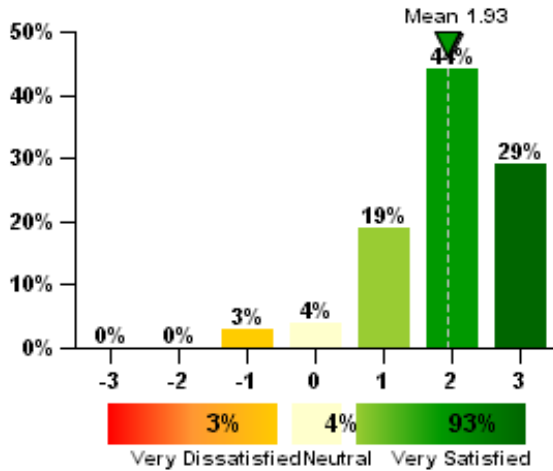
You have said that you are dissatisfied with the amount of daylight in your workspace. Which of the following contribute to your dissatisfaction?

(check all that apply)



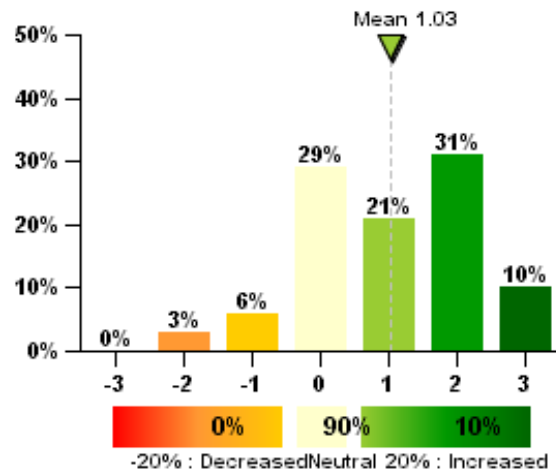
## 2.10 General Comments

All things considered, how satisfied are you with your personal workspace?



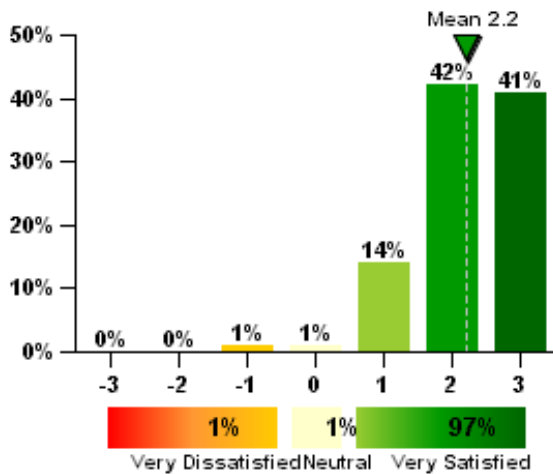
N=72

Please estimate how your productivity is increased or decreased by the environmental conditions in this building (e.g. thermal, lighting, acoustics, cleanliness):



N=70

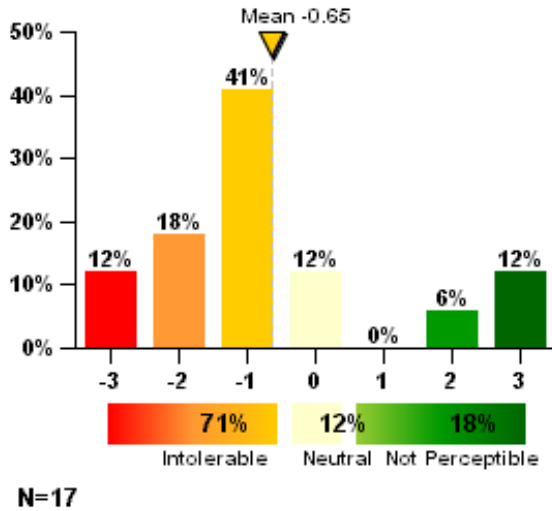
How satisfied are you with the building overall?



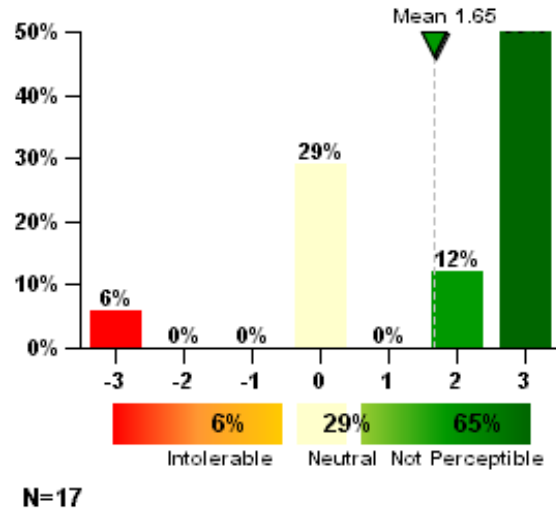
N=71

## 2.11 Glare

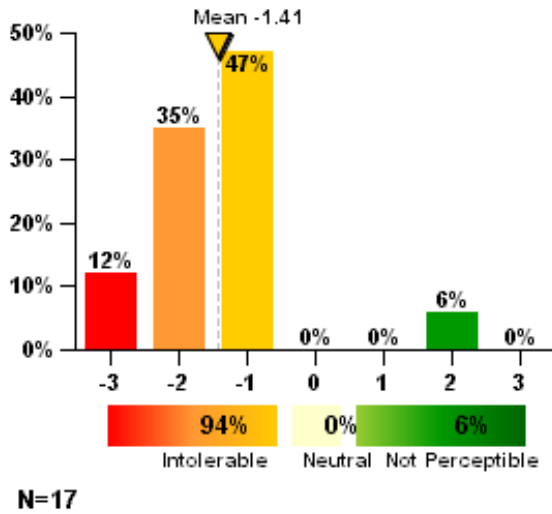
Glare from windows



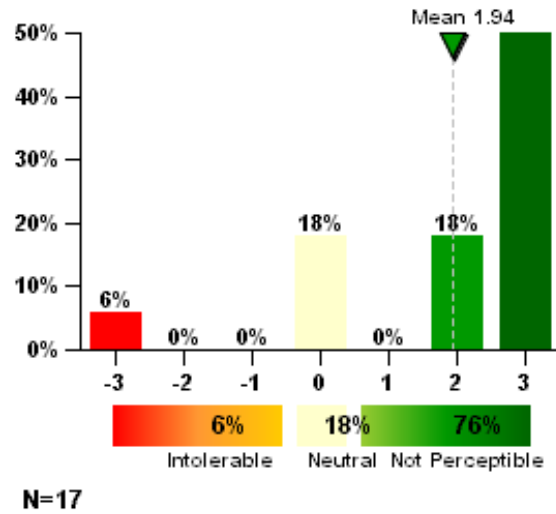
Glare from electric lights



Daylight reflecting on your computer screen

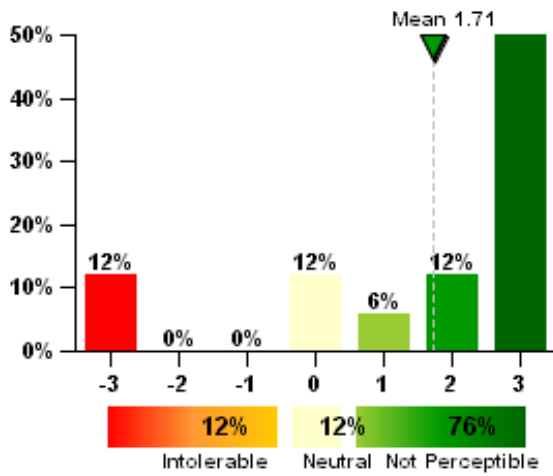


Electric light reflecting on your computer screen



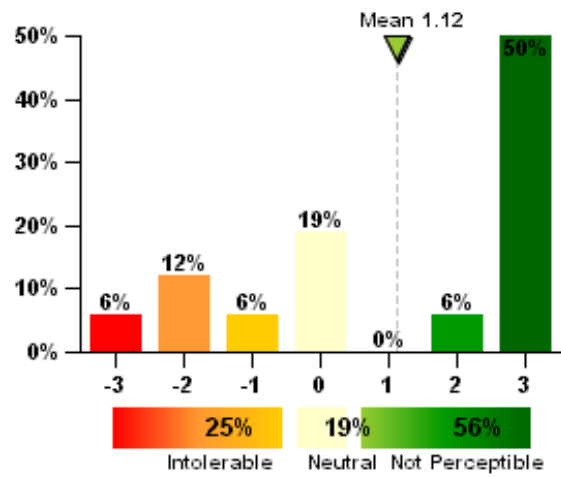


Glare from bright vertical surfaces (i.e. walls and partitions)



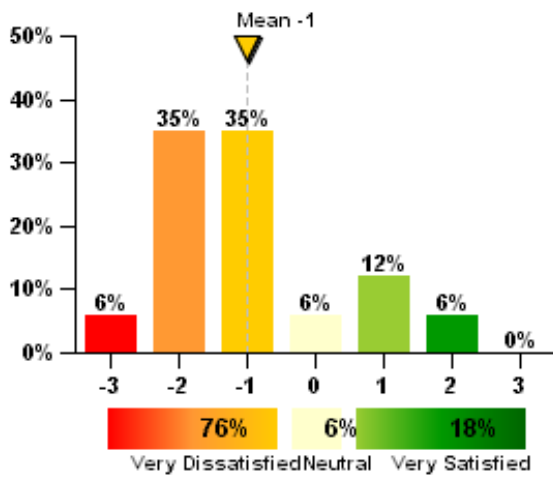
N=17

Other Sources of Glare (please specify)



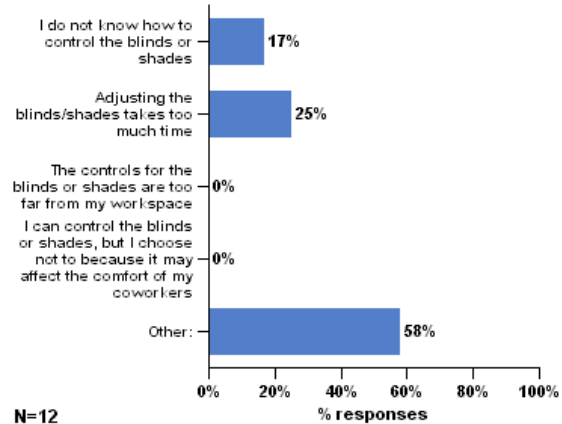
N=16

How satisfied are you with your ability to control the amount of glare in your workspace?



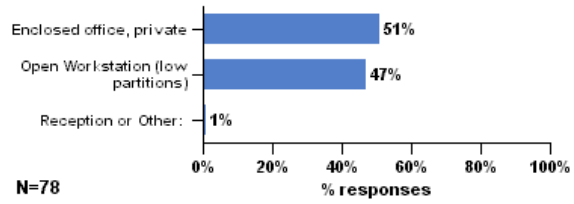
N=17

You have said that you are dissatisfied with your ability to control the amount of glare in your workspace. Below is a list of factors that may contribute to your dissatisfaction. Please check all that apply. (check all that apply)



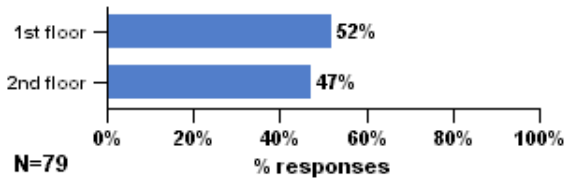
## 2.12 Personal Workspace Description

Which of the following best describes your personal workspace?

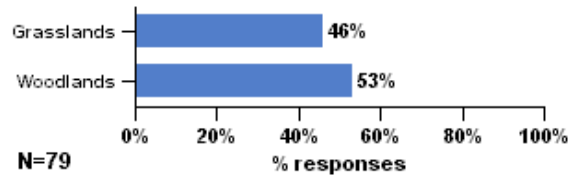


## 2.13 Personal Workspace Location

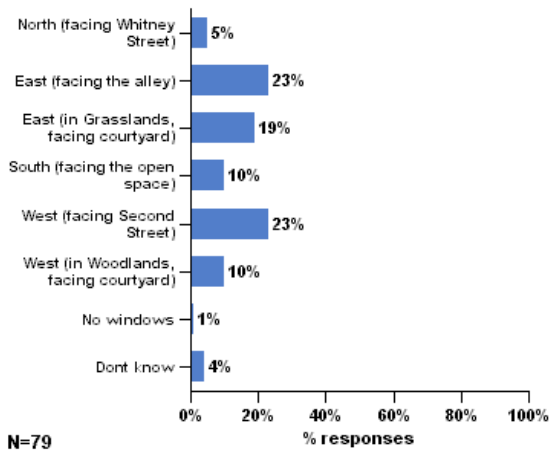
On which floor is your workspace located?



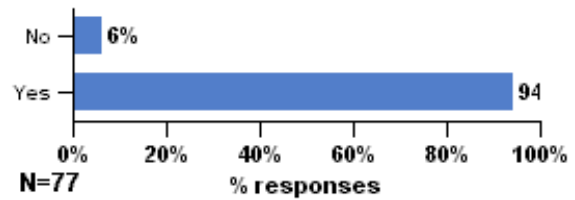
In which area of the building is your workspace located?



To which direction do the windows closest to your workspace face?

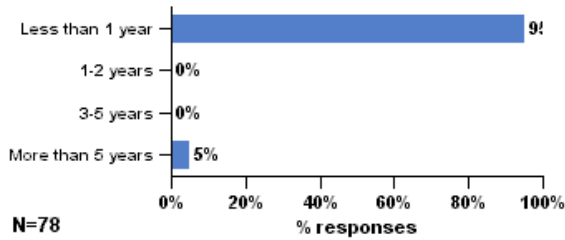


Are you near a window (within 15 feet)?

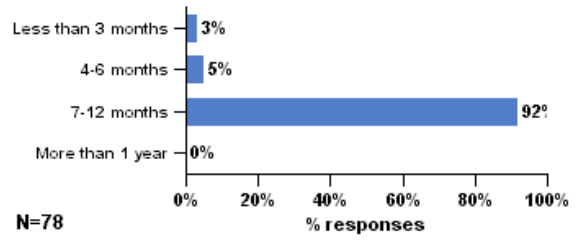


### 3.1 Background

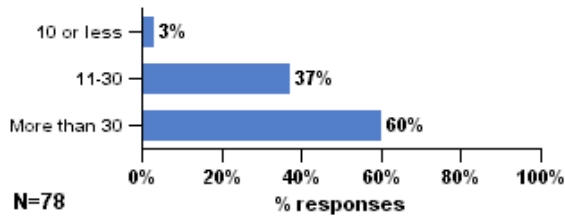
How many years have you worked in this building?



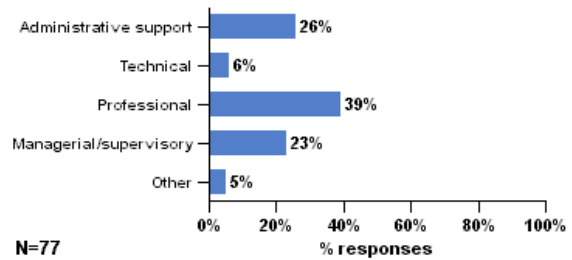
How long have you been working at your present workspace?



In a typical week, how many hours do you spend in your workspace?

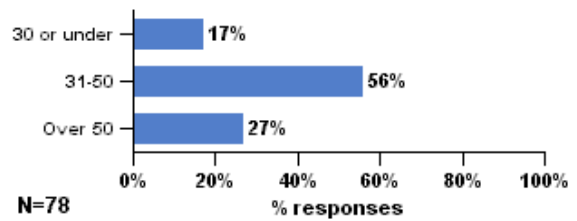


How would you describe the work you do?



Which of the following departments do you work in?

What is your age?



What is your gender?

