

Chartwell School - EHDD

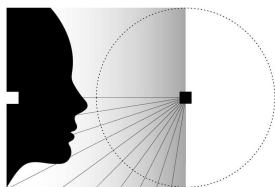
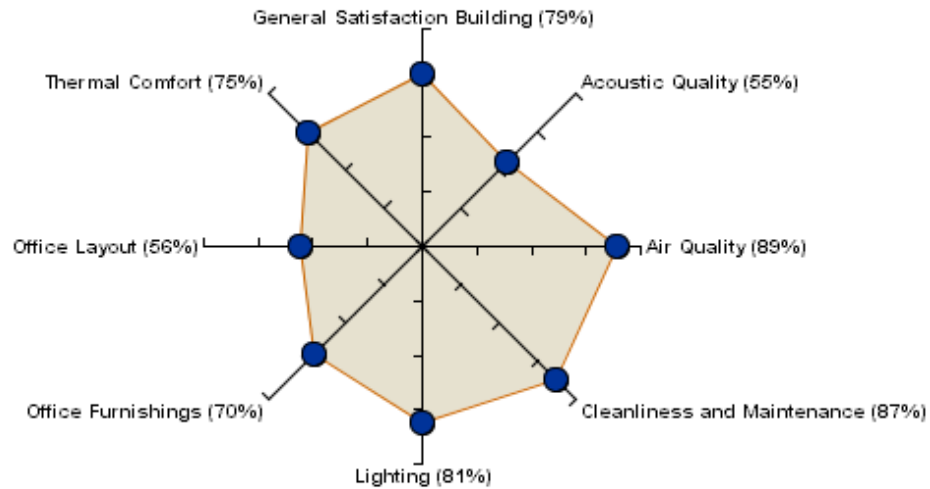
Building Scorecard - 11/25/2009

Survey Dates: 2/25/2008 through 3/10/2008

Center for the Built Environment

University of California, Berkeley

Satisfaction in Core Survey Categories



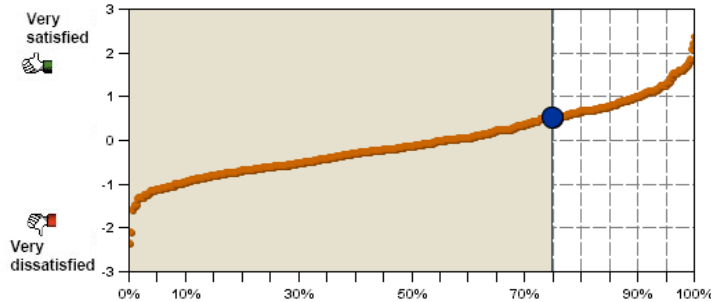
C B E

1.2 Category Mean vs. Benchmark

Performance of Chartwell School - EHDD in core survey categories

Acoustic Quality

75%
Percentile

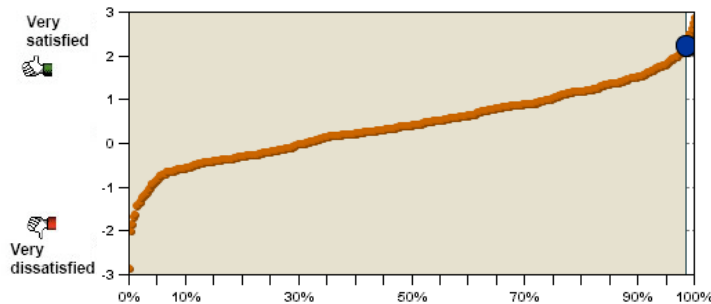


0.53
Mean Response

55%
Satisfied

Air Quality

99%
Percentile

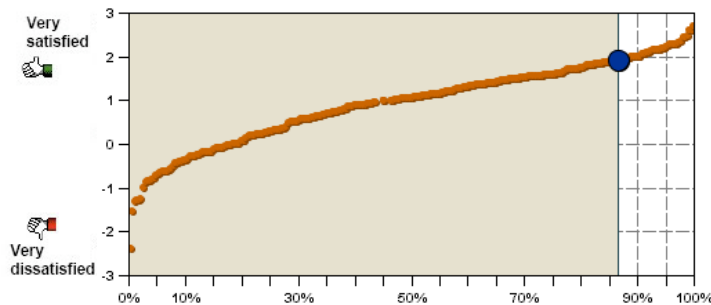


2.25
Mean Response

89%
Satisfied

Cleanliness and Maintenance

87%
Percentile

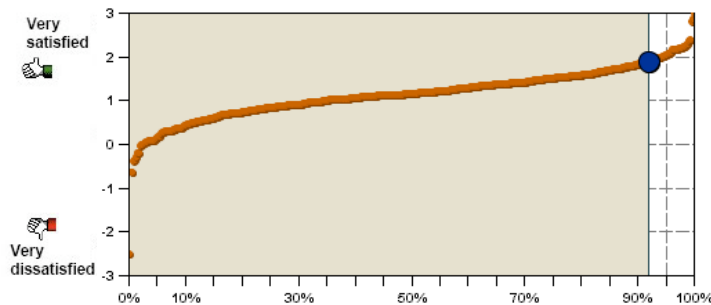


1.94
Mean Response

87%
Satisfied

Lighting

92%
Percentile



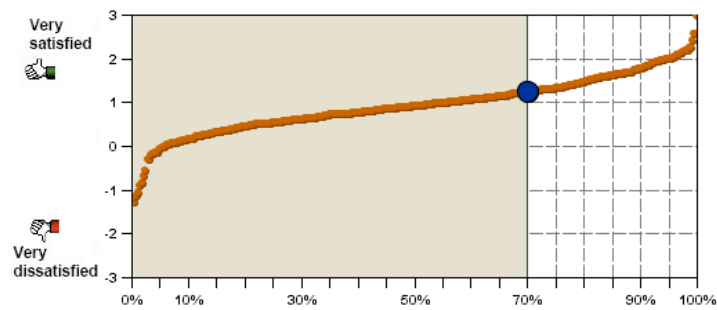
1.9
Mean Response

81%
Satisfied

Performance of Chartwell School - EHDD in core survey categories

Office Furnishings

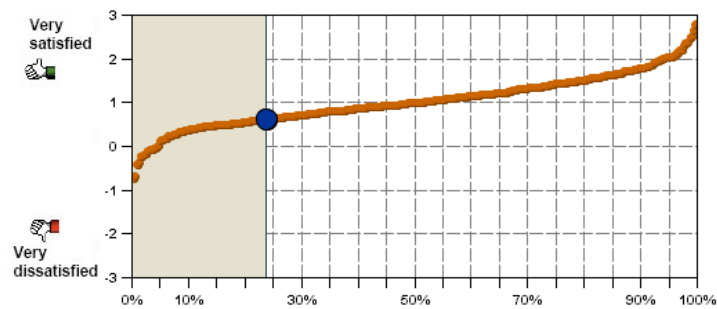
70%
Percentile



1.27
Mean Response
70%
Satisfied

Office Layout

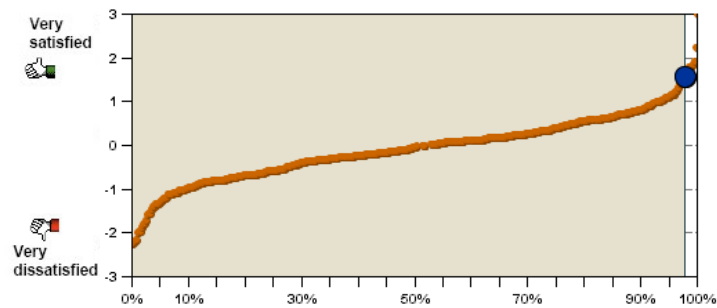
24%
Percentile



0.63
Mean Response
56%
Satisfied

Thermal Comfort

98%
Percentile

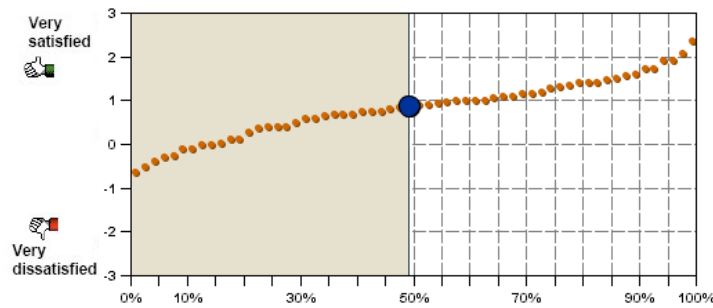


1.57
Mean Response
75%
Satisfied

Performance of Chartwell School - EHDD in additional survey categories

Classroom Furnishings

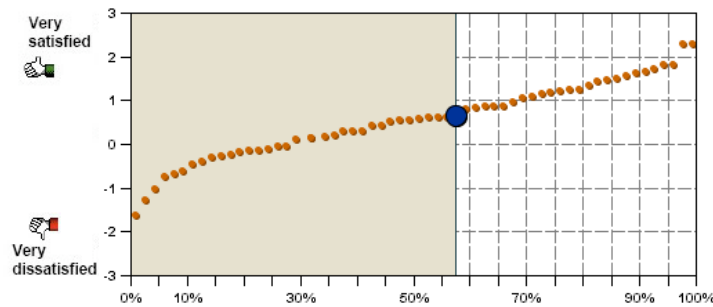
49%
Percentile



0.9
Mean Response
60%
Satisfied

Classroom Layout

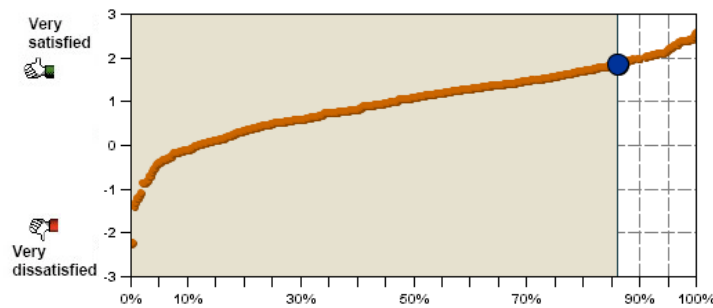
57%
Percentile



0.67
Mean Response
63%
Satisfied

General Satisfaction-Building

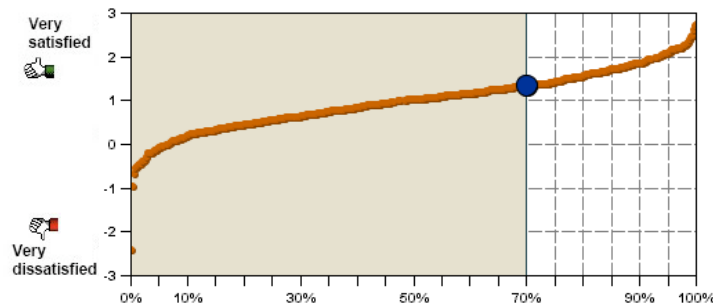
86%
Percentile



1.86
Mean Response
79%
Satisfied

General Satisfaction-Workspace

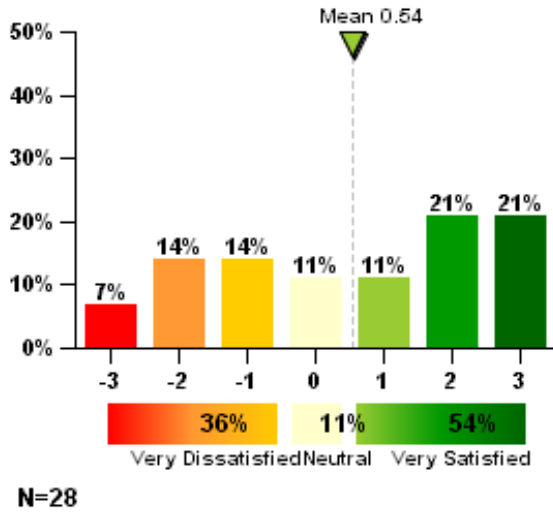
70%
Percentile



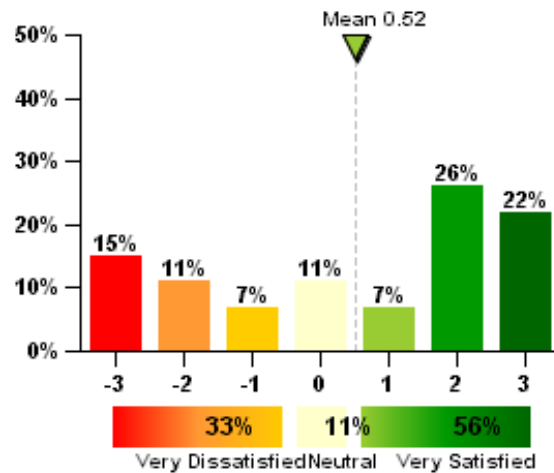
1.36
Mean Response
79%
Satisfied

2.1 Acoustic Quality

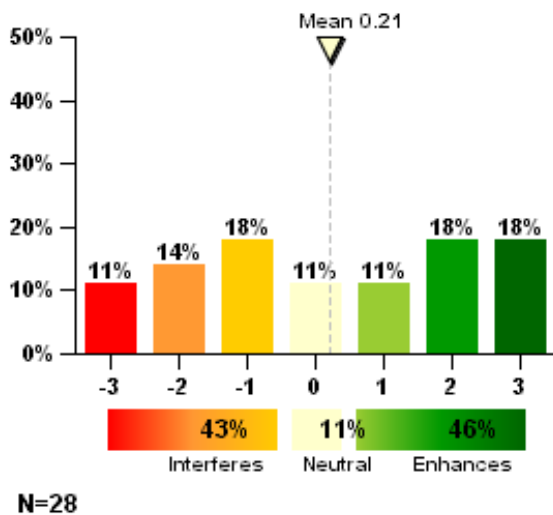
How satisfied are you with the noise level in your workspace?



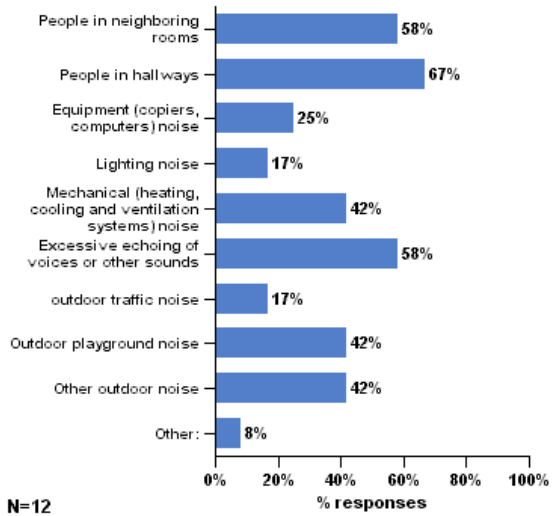
How satisfied are you with the sound privacy in your workspace (ability to have conversations without your neighbors overhearing and vice versa)?



Overall, does the acoustic quality in your workspace enhance or interfere with your ability to get your job done?

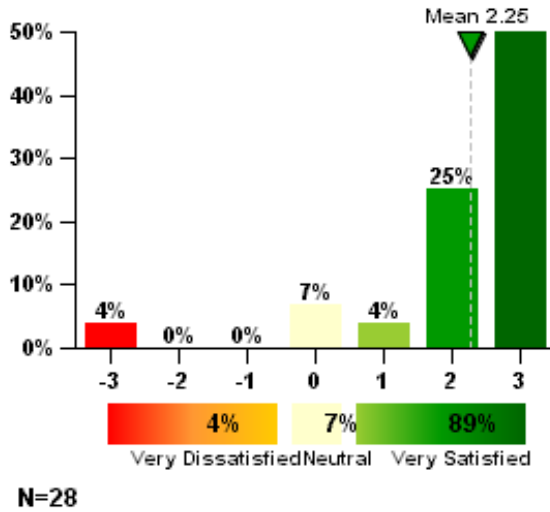


You have said you are dissatisfied with the acoustics in your workspace. Which of the following contribute to this problem? (check all that apply)



2.2 Air Quality

How satisfied are you with the air quality in your workspace (i.e. stuffy/stale air, cleanliness, odors)?



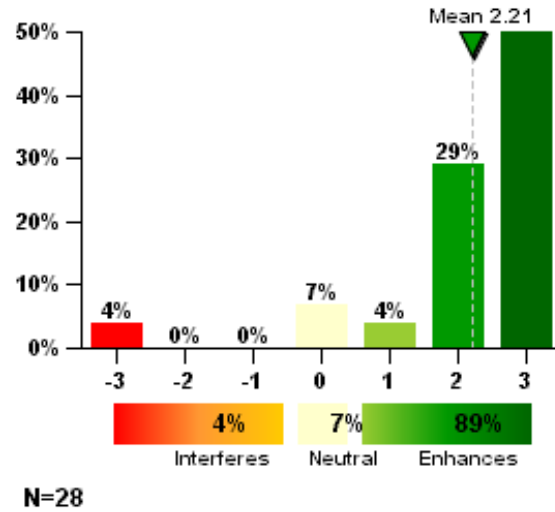
Air is stuffy/stale

Due to the limited number of responses to this question, its chart is not displayed

Air smells bad (odors)

Due to the limited number of responses to this question, its chart is not displayed

Overall, does the air quality in your workspace enhance or interfere with your ability to get your job done?

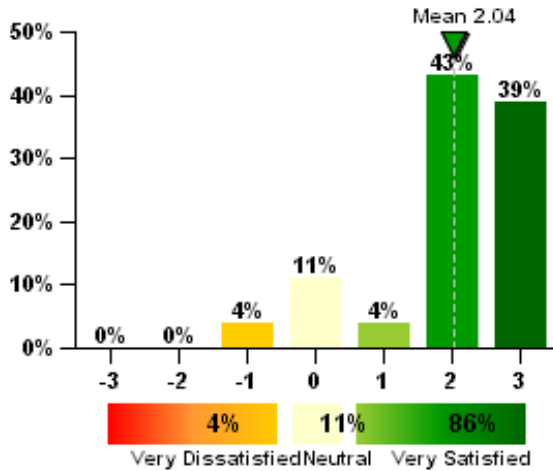


Air is not clean

Due to the limited number of responses to this question, its chart is not displayed

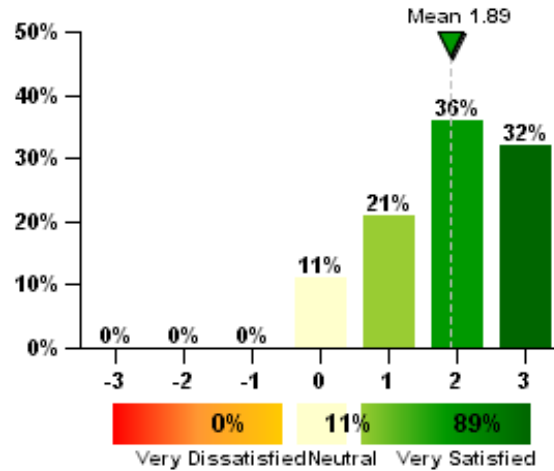
2.3 Cleanliness and Maintenance

How satisfied are you with general cleanliness of the overall building?



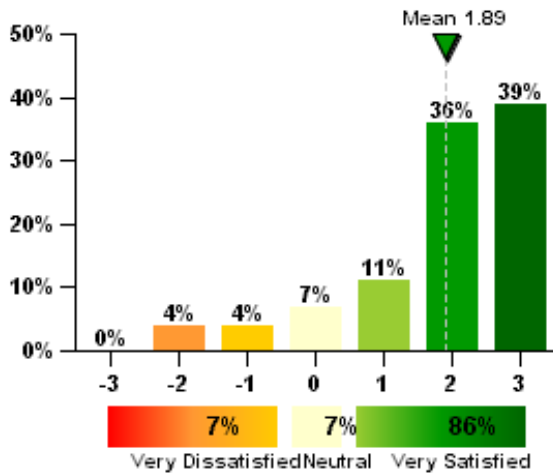
N=28

How satisfied are you with cleaning service provided for your workspace?



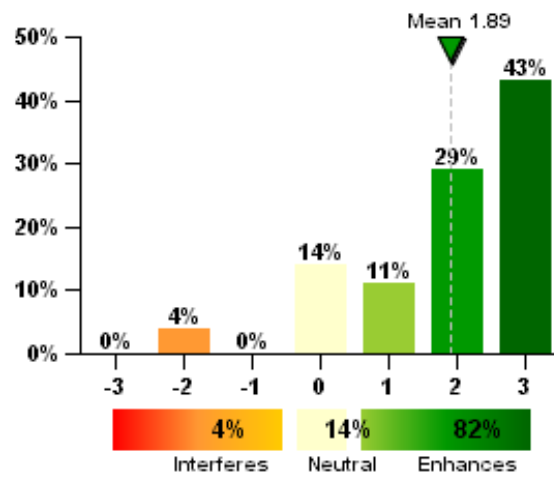
N=28

How satisfied are you with general maintenance of the building?



N=28

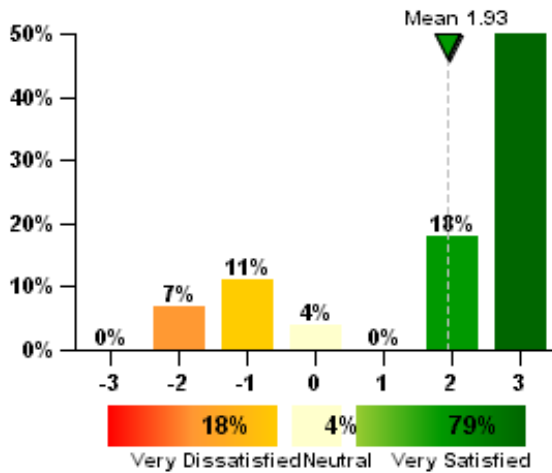
Does the cleanliness and maintenance of this building enhance or interfere with your ability to get your job done?



N=28

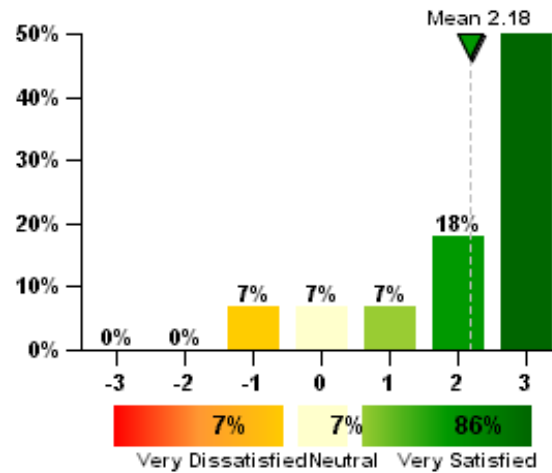
2.4 Lighting

How satisfied are you with the amount of light in your workspace?



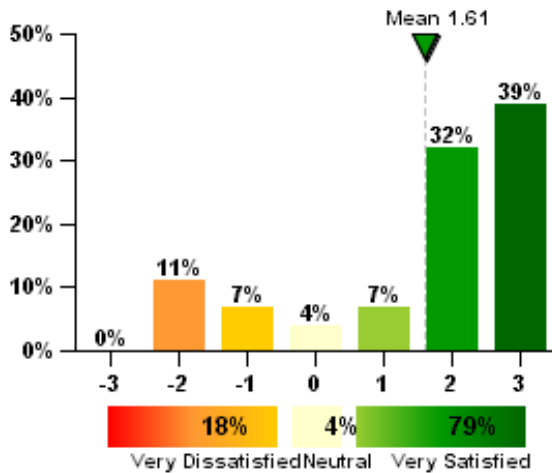
N=28

How satisfied are you with the amount of daylight in your workspace?



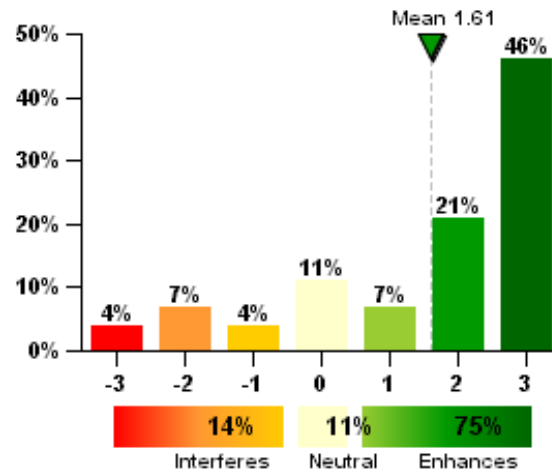
N=28

How satisfied are you with the visual comfort of the lighting (e.g., glare, reflections, contrast)?



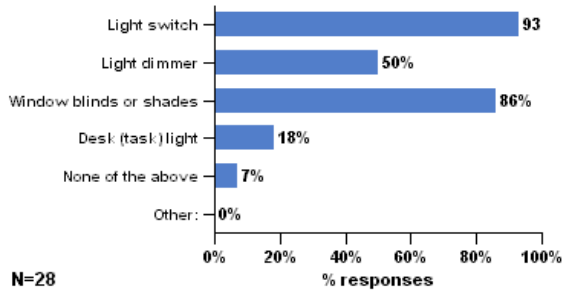
N=28

Overall, does the lighting quality enhance or interfere with your ability to get your job done?

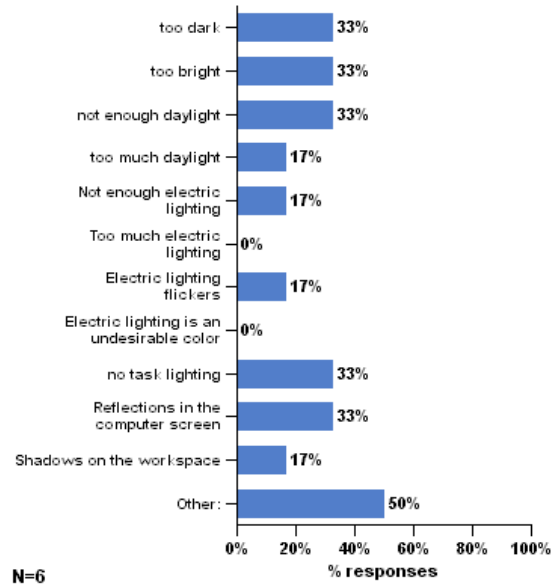


N=28

Which of the following controls do you have over the lighting in your workspace? (check all that apply)

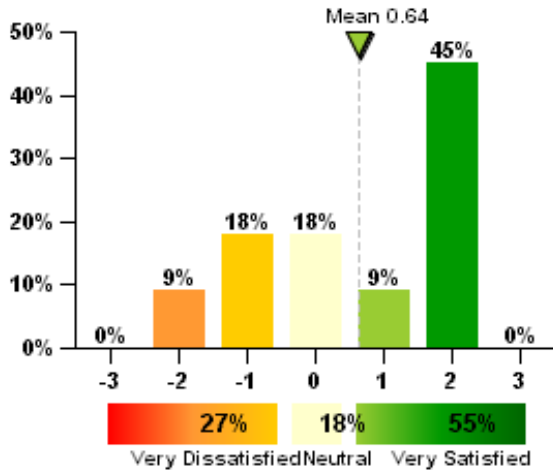


You have said that you are dissatisfied with the lighting in your workspace. Which of the following contribute to your dissatisfaction? (check all that apply)



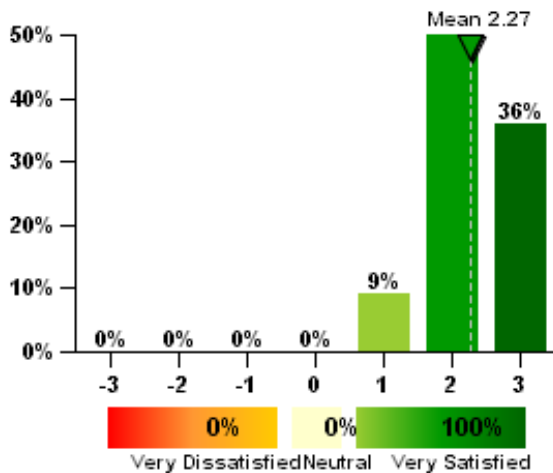
2.5 Office Furnishings

How satisfied are you with the comfort of your office furnishings (chair, desk, computer, equipment, etc.)?



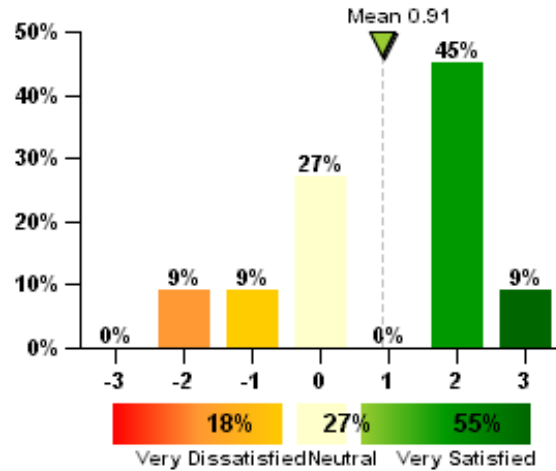
N=11

How satisfied are you with the colors and textures of flooring, furniture and surface finishes?



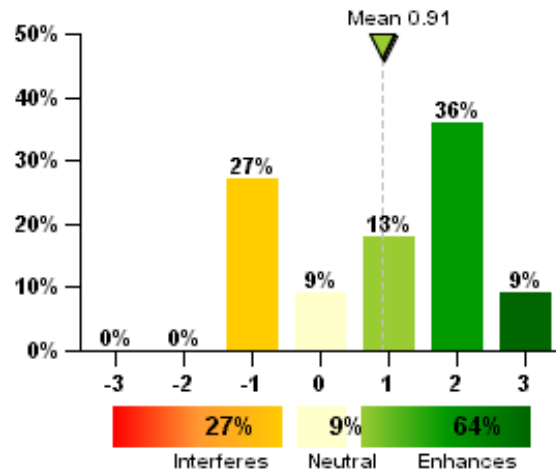
N=11

How satisfied are you with your ability to adjust your furniture to meet your needs?



N=11

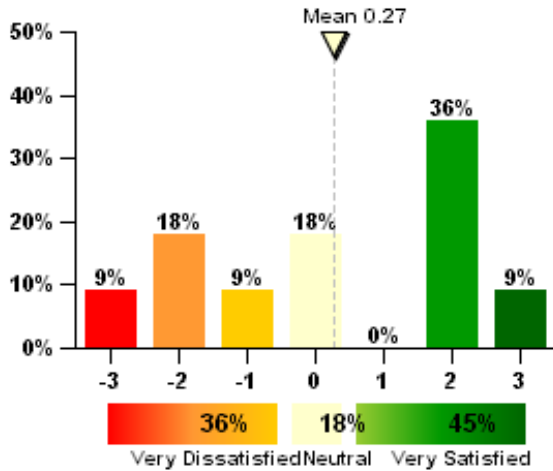
Do your office furnishings enhance or interfere with your ability to get your job done?



N=11

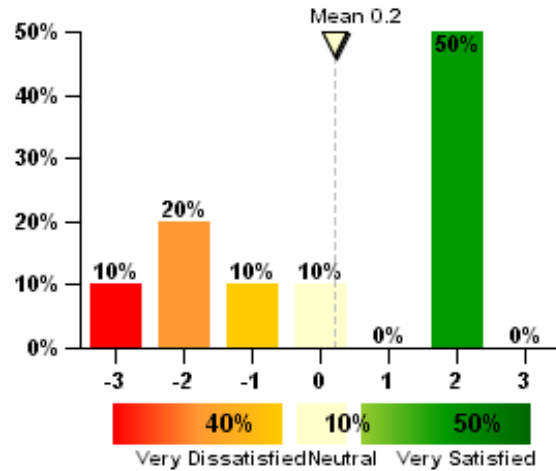
2.6 Office Layout

How satisfied are you with the amount of space available for individual work and storage?



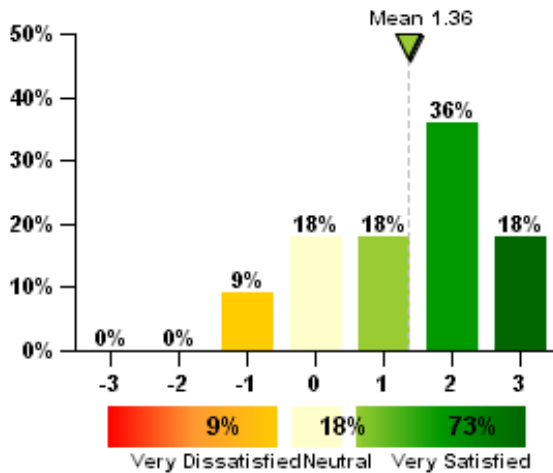
N=11

How satisfied are you with the level of visual privacy?



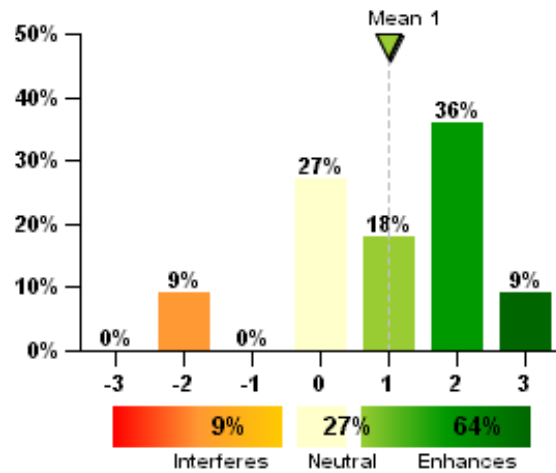
N=10

How satisfied are you with ease of interaction with co-workers?



N=11

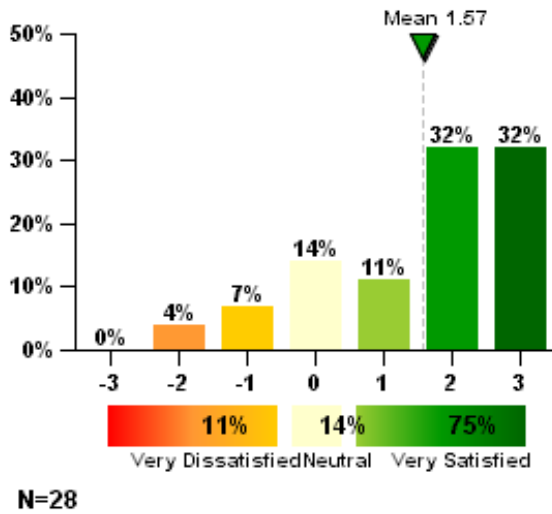
Overall, does the office layout enhance or interfere with your ability to get your job done?



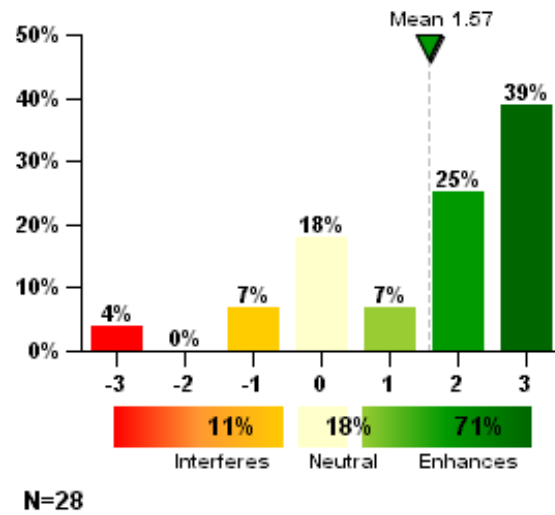
N=11

2.7 Thermal Comfort

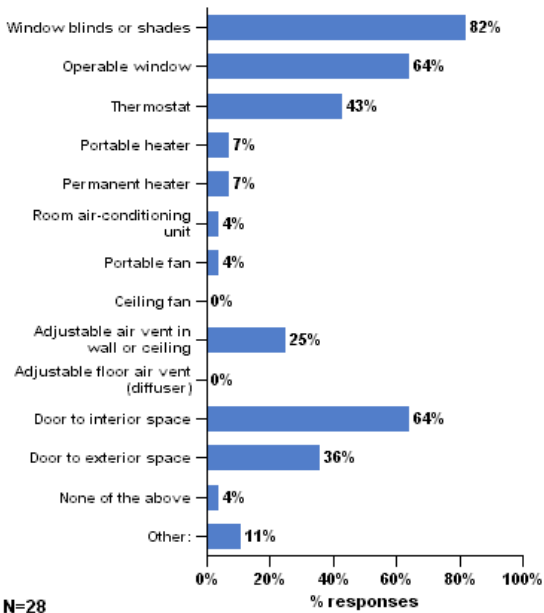
How satisfied are you with the temperature in your workspace?



Overall, does your thermal comfort in your workspace enhance or interfere with your ability to get your job done?



Which of the following do you personally adjust or control in your workspace? (check all that apply)



In warm/hot weather, the temperature in my workspace is: (check all that apply)

Due to the limited number of responses to this question, its chart is not displayed

When is this most often a problem? (check all that apply)

Due to the limited number of responses to this question, its chart is not displayed

In cool/cold weather, the temperature in my workspace is: (check all that apply)

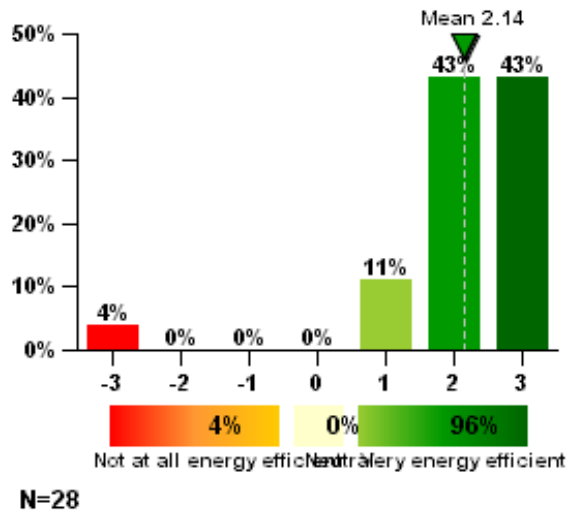
Due to the limited number of responses to this question, its chart is not displayed

How would you best describe the source of this discomfort? (check all that apply)

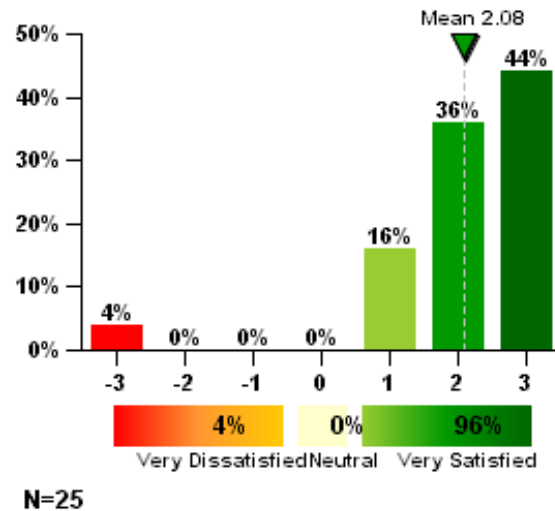
Due to the limited number of responses to this question, its chart is not displayed

2.8 Building Features

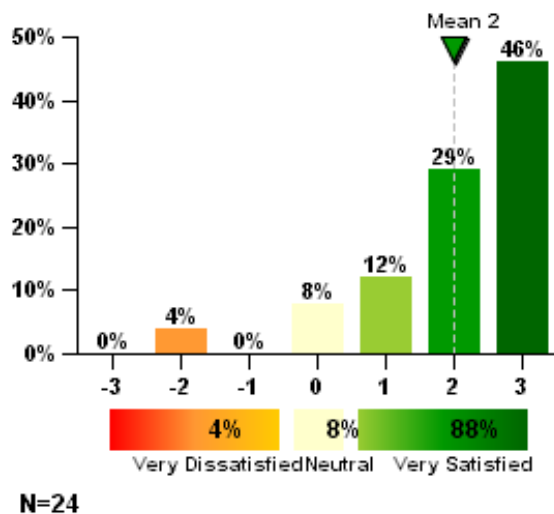
Considering energy use, how efficiently is this building performing in your opinion?



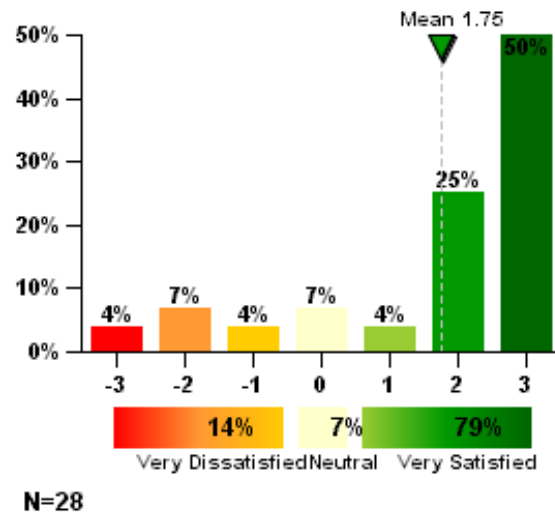
Thermostats



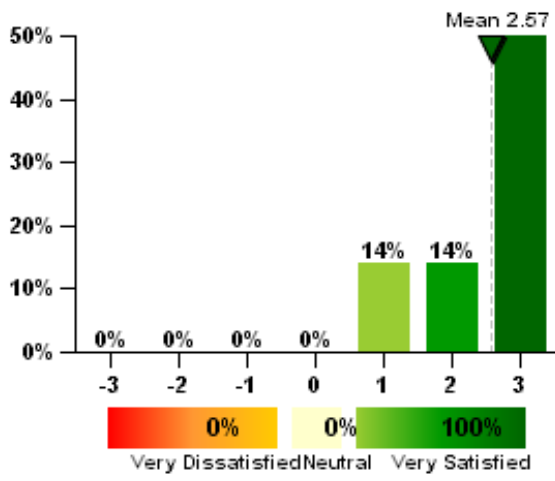
Automatic daylight controls



Low flow toilets

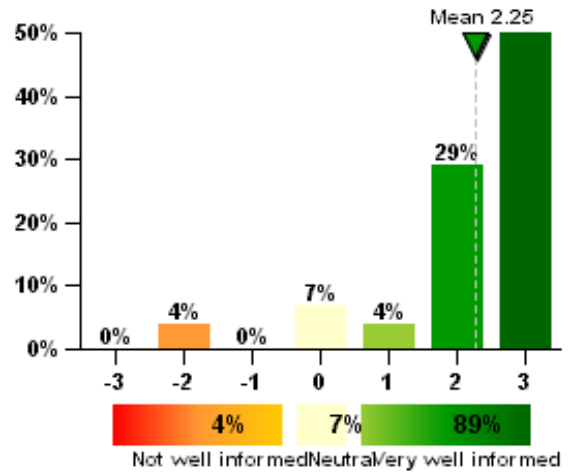


Waterless urinals



N=7

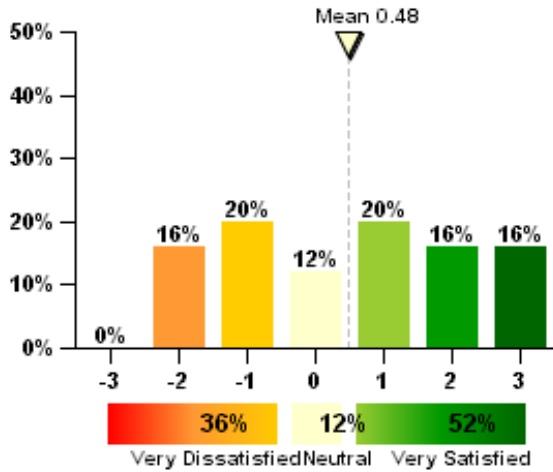
How well informed do you feel about using the above mentioned features in this building?



N=28

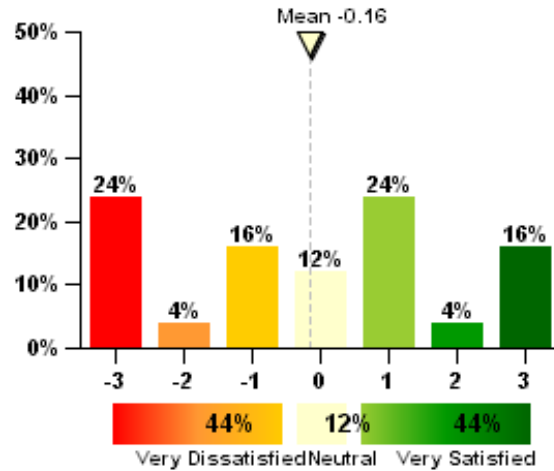
2.9 Classroom Furnishings

How satisfied are you with the comfort of your classroom furnishings (student furniture included)?



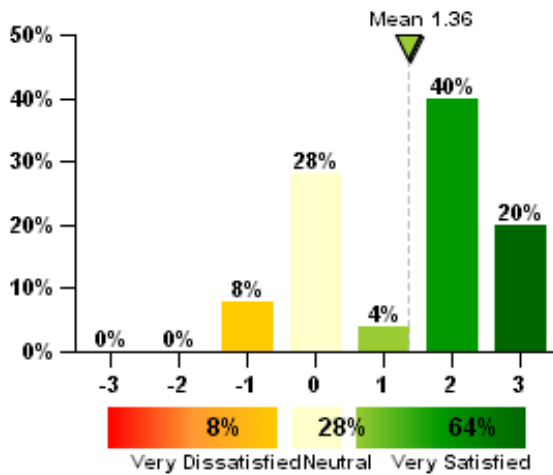
N=25

How satisfied are you with your ability to adjust or move your furniture to meet your needs?



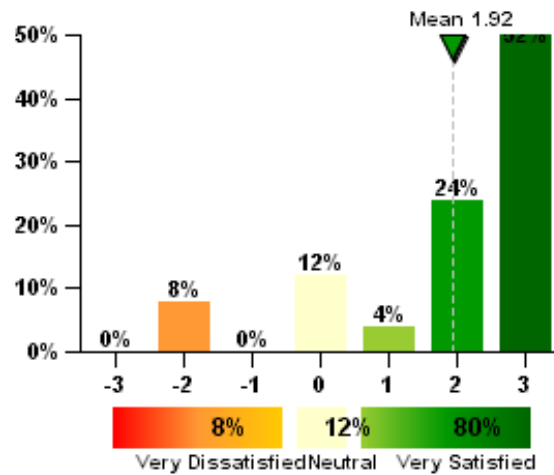
N=25

How satisfied are you with your classroom furniture's ability to be cleaned easily?



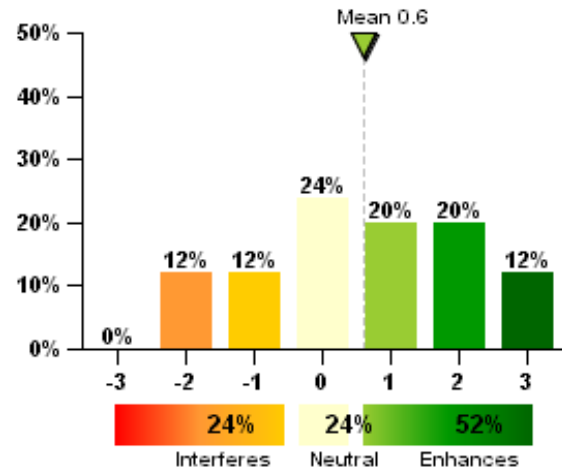
N=25

How satisfied are you with the colors and textures of flooring, furniture and surface finishes?



N=25

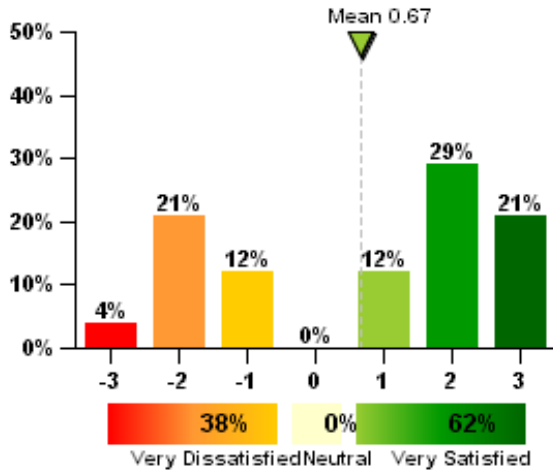
Do your classroom furnishings enhance or interfere with your ability to get your job done?



N=25

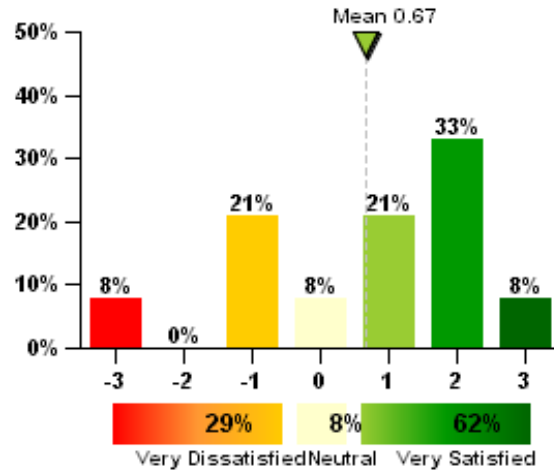
2.10 Classroom Layout

How satisfied are you with the amount and type of space available for your individual work and storage?



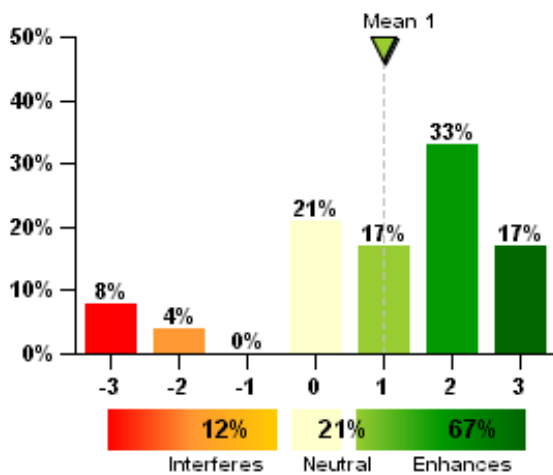
N=24

How satisfied are you with the amount and type of space available for student work and storage?



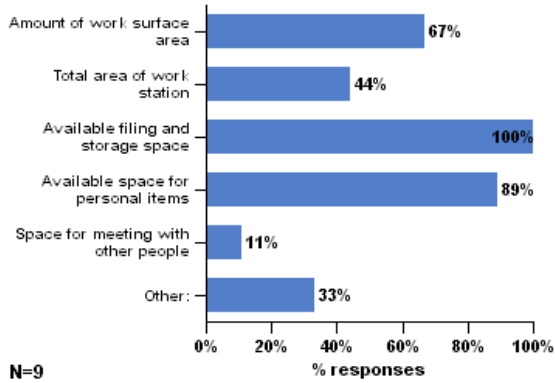
N=24

Overall, does the classroom layout enhance or interfere with your ability to get your job done?

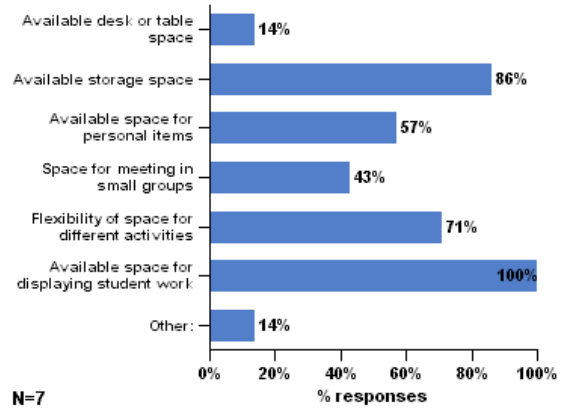


N=24

You have said that you are dissatisfied with the amount or type of space available for your individual work and storage in the classroom. Which of the following contribute to your dissatisfaction? (check all that apply)

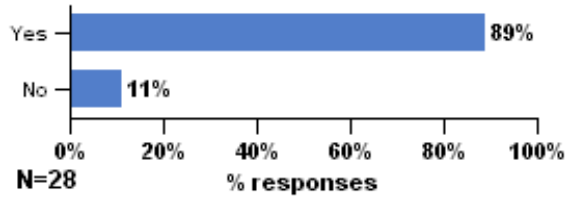


You have said that you are dissatisfied with the amount or type of space available for student work and storage in the classroom. Which of the following contribute to your dissatisfaction? (check all that apply)



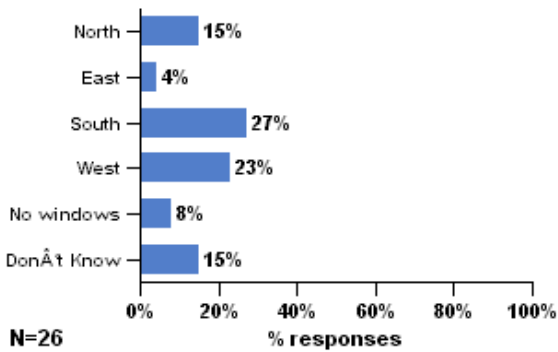
2.11 Classroom Workspace

Do you spend more than 10 hours a week in one or more classrooms (including specialty education spaces such as gyms, art rooms and shops)?

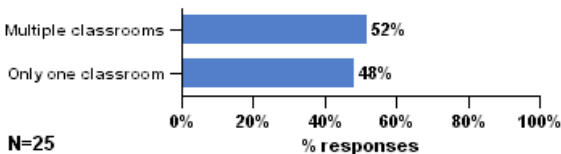


2.12 Classroom Workspace Location

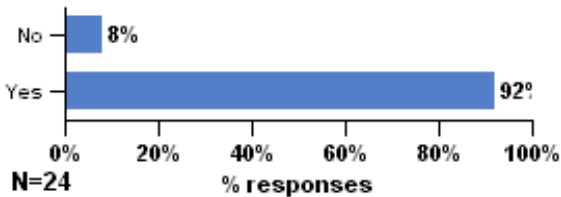
To which direction do the windows in your primary classroom face?



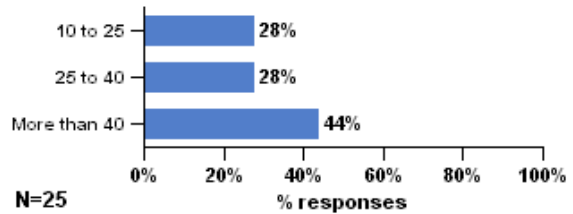
Do you use multiple classrooms regularly, or only one?



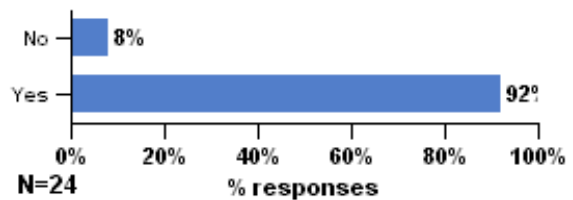
Does your primary classroom have windows?



In a typical week, how many hours do you spend in classrooms in this building?

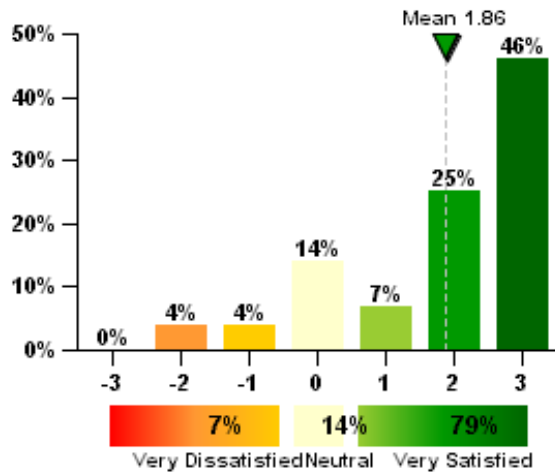


Does your primary classroom have an exterior wall?



2.13 General Building Satisfaction

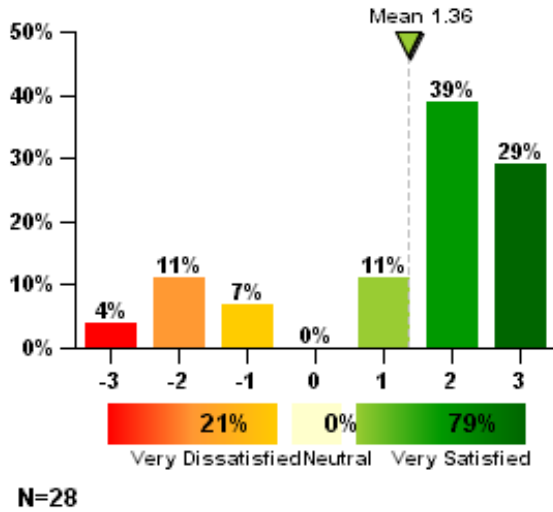
How satisfied are you with the building overall?



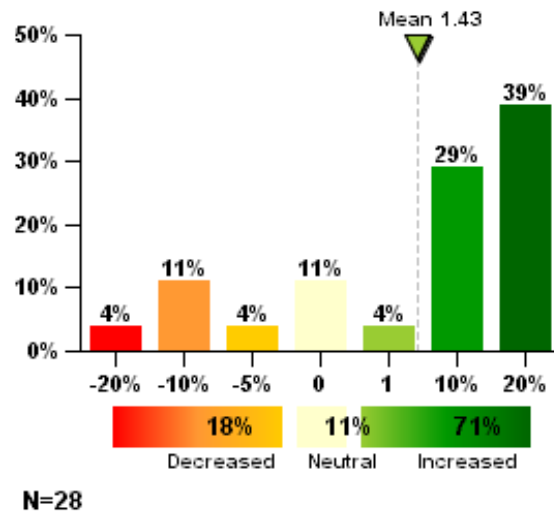
N=28

2.14 General Comments

All things considered, how satisfied are you with your personal workspace?

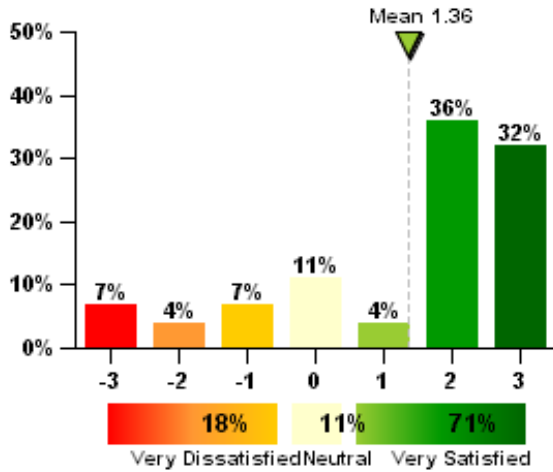


Please estimate how your productivity is increased or decreased by the environmental conditions in this building (e.g. thermal, lighting, acoustics, cleanliness):



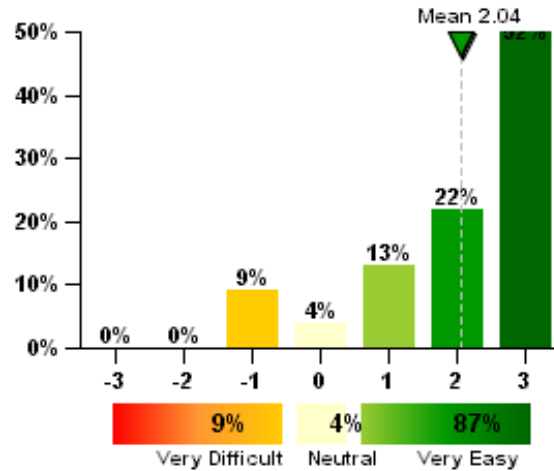
2.15 Personal Workspace Adjustability

How satisfied are you with the extent to which you can adjust or control the thermal conditions of your workspace?



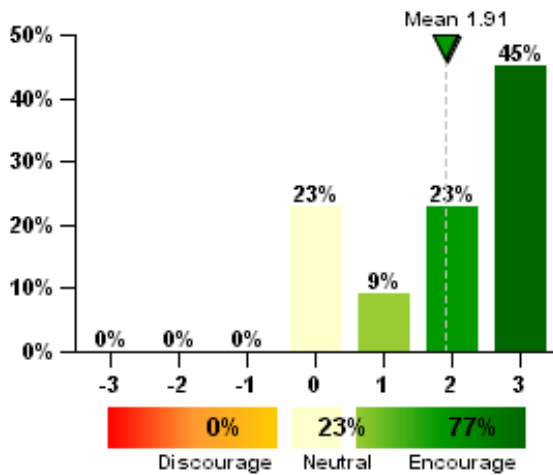
N=28

How easy is it for you to open or close the window in your workspace?



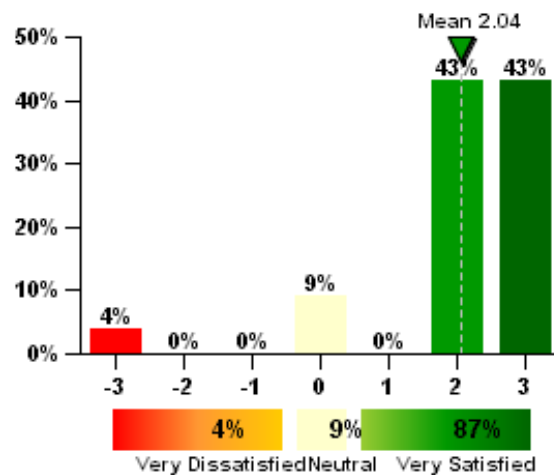
N=23

To what degree does the building management encourage or discourage the use of operable windows?



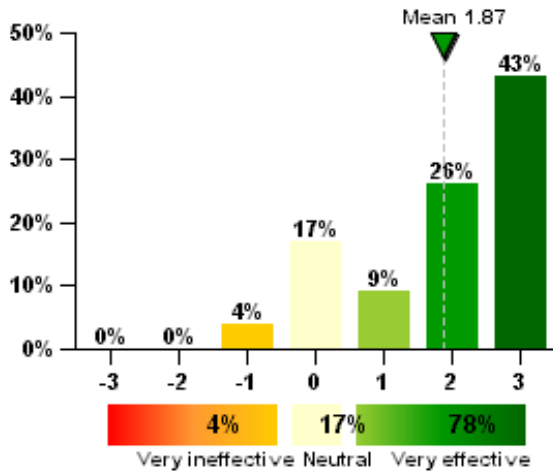
N=22

How satisfied are you with the operable window(s) in your workspace in warm/hot weather?



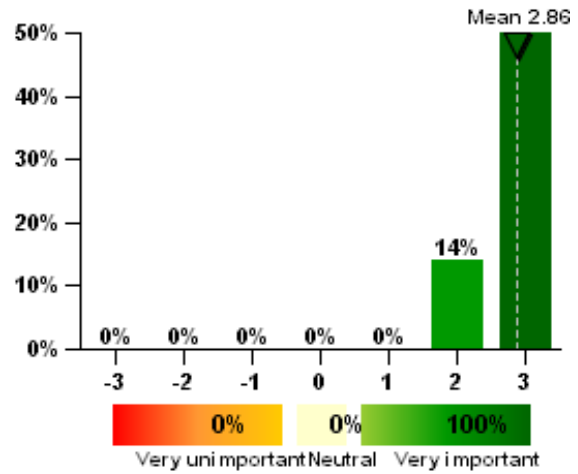
N=23

Overall, how effective is opening your window in helping you stay comfortable in warm/hot weather?



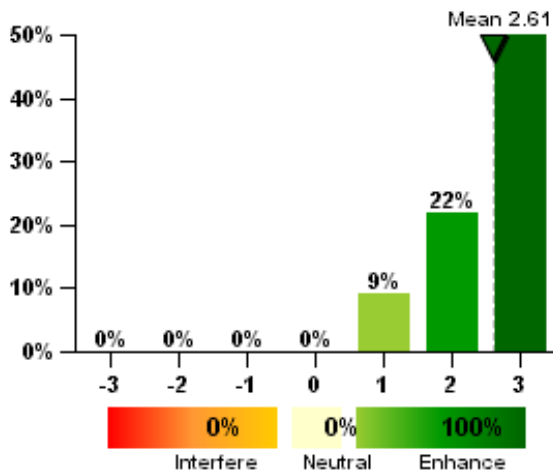
N=23

How important is it for you to have an operable window in your workspace?



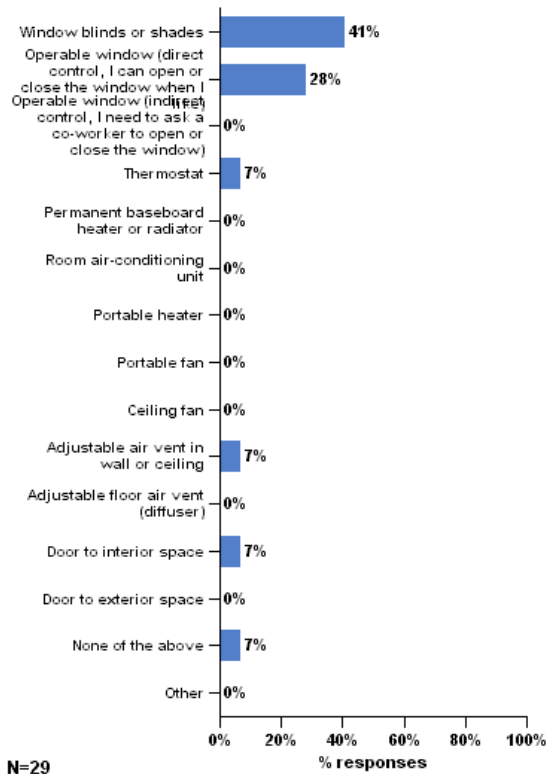
N=22

Overall, does having the operable window(s) in your workspace enhance or interfere with your ability to get your job done?

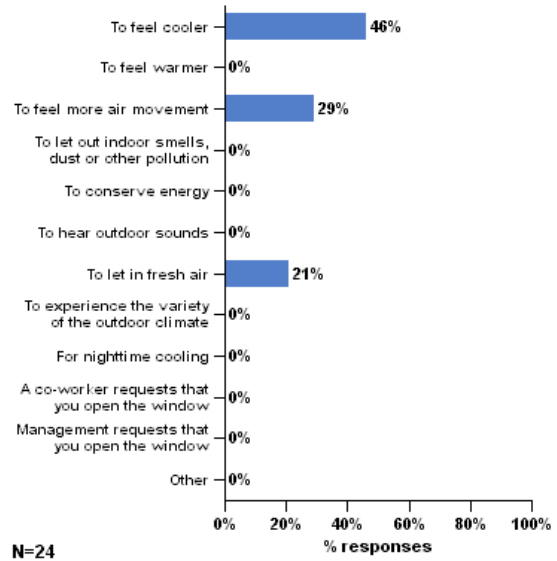


N=23

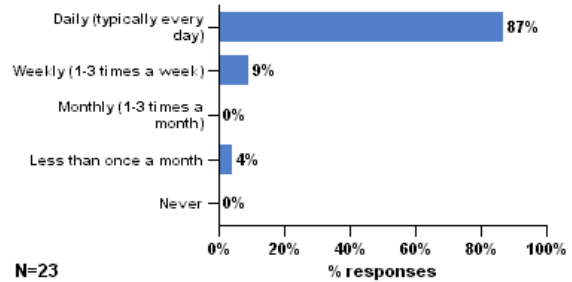
Referring to the question above, which item do you adjust most frequently?



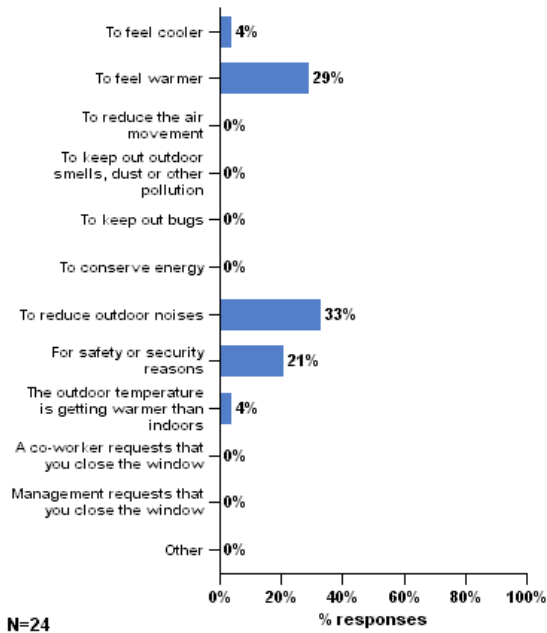
Of the reasons you checked above, which is the most common reason why you open your window(s) in your workspace in warm/hot weather.



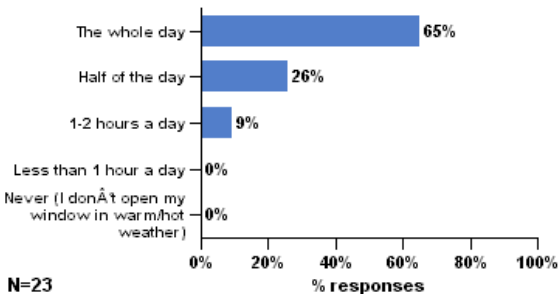
In warm/hot weather, how often do you typically adjust your window?



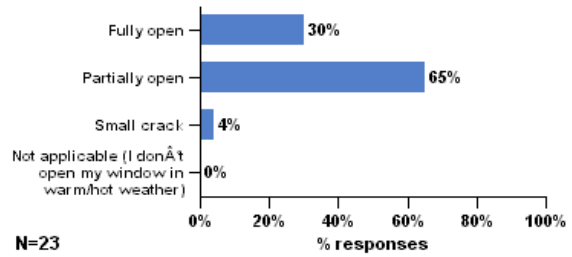
Of the reasons you checked above, which is the most common reason why you close the window(s) in your workspace in warm/hot weather.



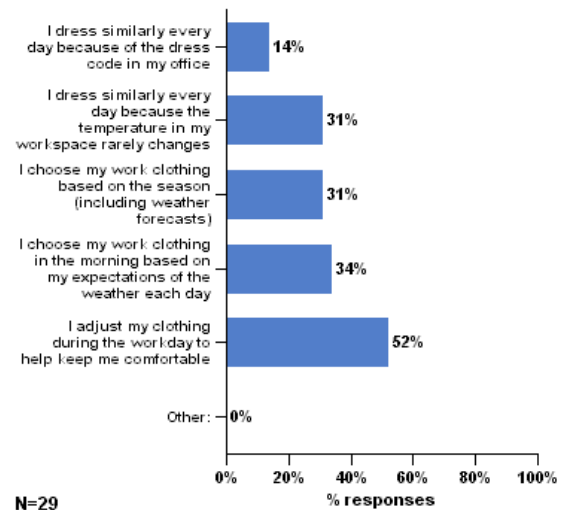
In warm/hot weather, approximately how much time during the day is your window typically open?



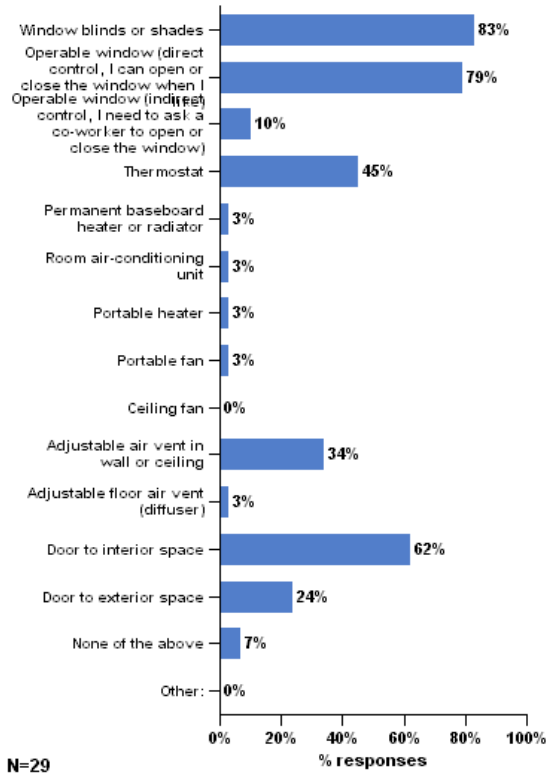
In warm/hot weather, approximately how far do you typically open your window?



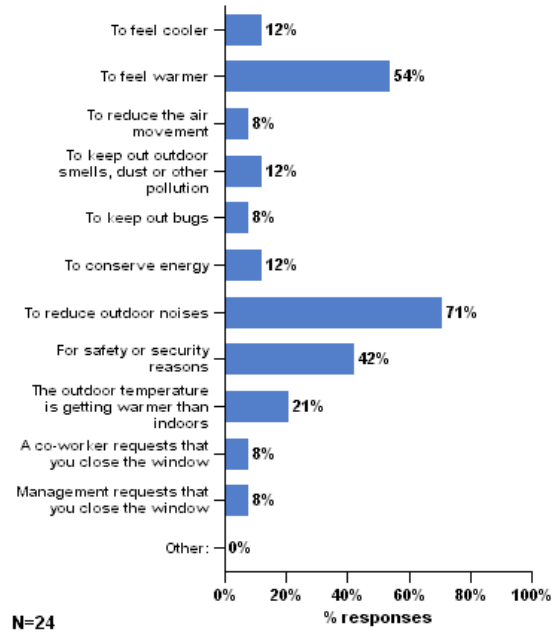
In warm/hot weather, how do you choose or adjust your work clothing in order to stay comfortable in this building? (check all that apply)



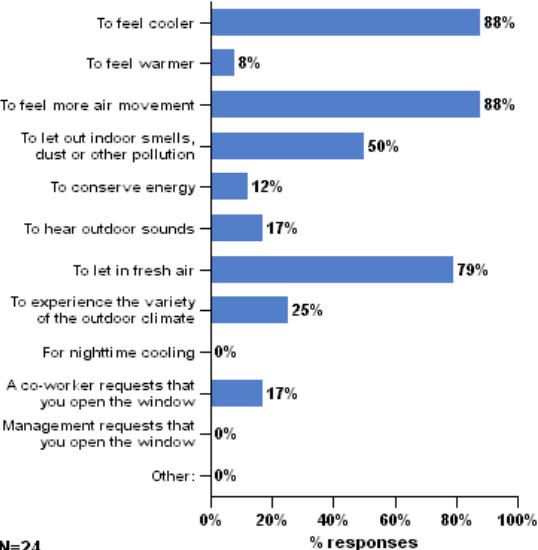
Which of the following can you personally adjust or control in your personal workspace, or neighboring area? (check all that apply)



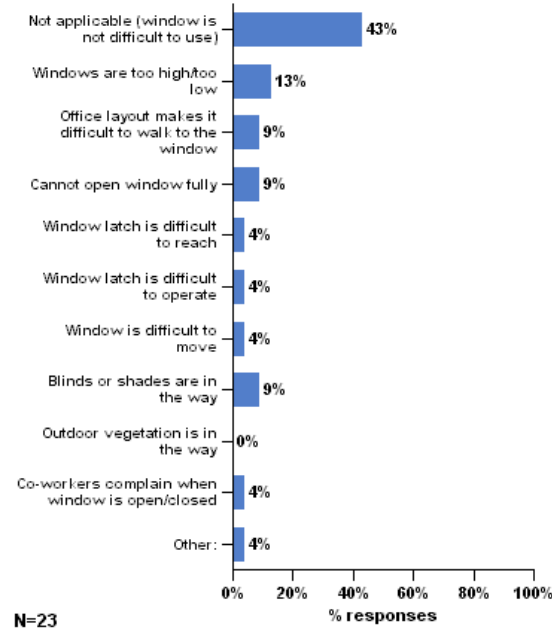
Below is a list of reasons why someone might close a window. Please identify all the reasons why you close the window(s) in your workspace in warm/hot weather. (check all that apply)



Below is a list of reasons why someone might open a window. Please identify all the reasons why you open the window(s) in your workspace in warm/hot weather. (check all that apply)

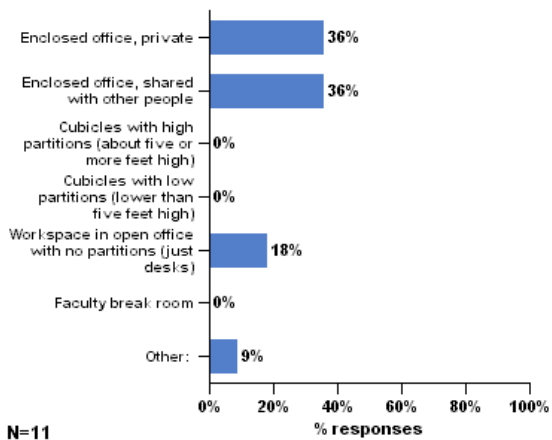


If it is difficult for you to use the window in your workspace, what factors contribute to this problem? (check all that apply)

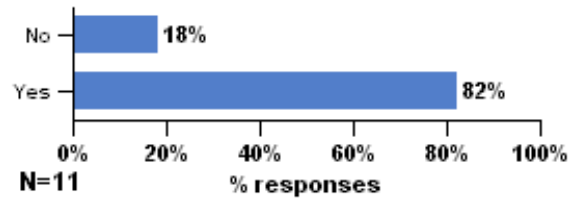


2.16 Personal Workspace Description

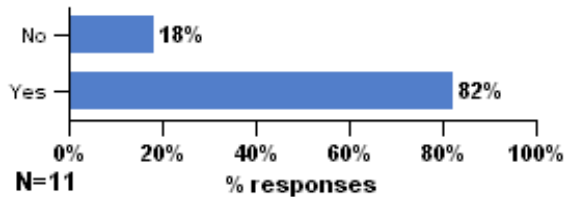
Which of the following best describes your office or administration space?



Are you near an exterior wall (within 15 feet)?

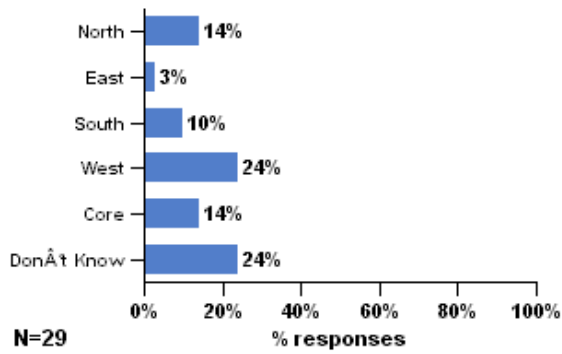


Are you near a window (within 15 feet)?

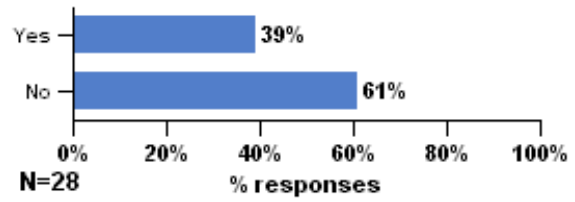


2.17 Personal Workspace Location

In which area of the building is your workspace located?

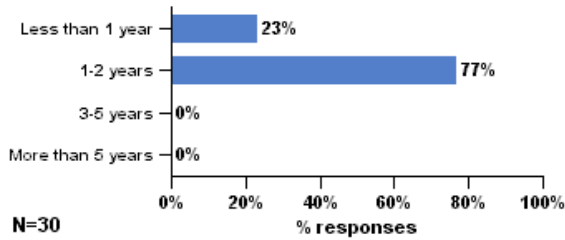


Do you spend more than 10 hours a week in an office or administrative space in the school?

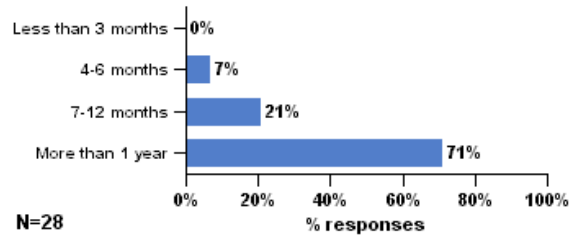


3.1 Background

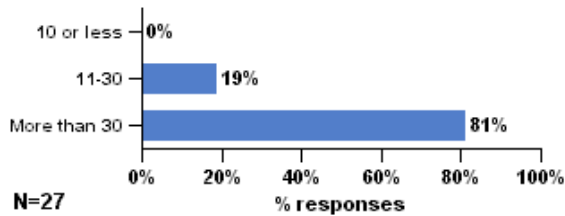
How many years have you worked in this building?



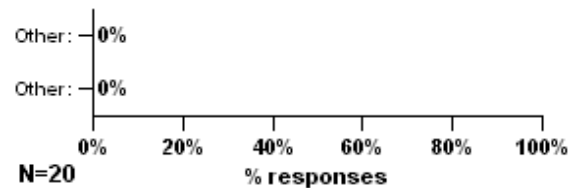
How long have you been working at your present workspace?



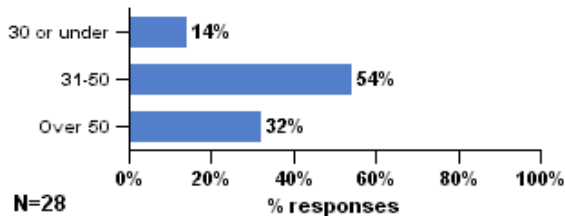
In a typical week, how many hours do you spend in your workspace?



How would you describe the work you do?



What is your age?



What is your gender?

