

Clif Bar & Company Headquarters

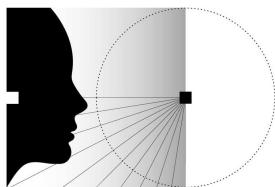
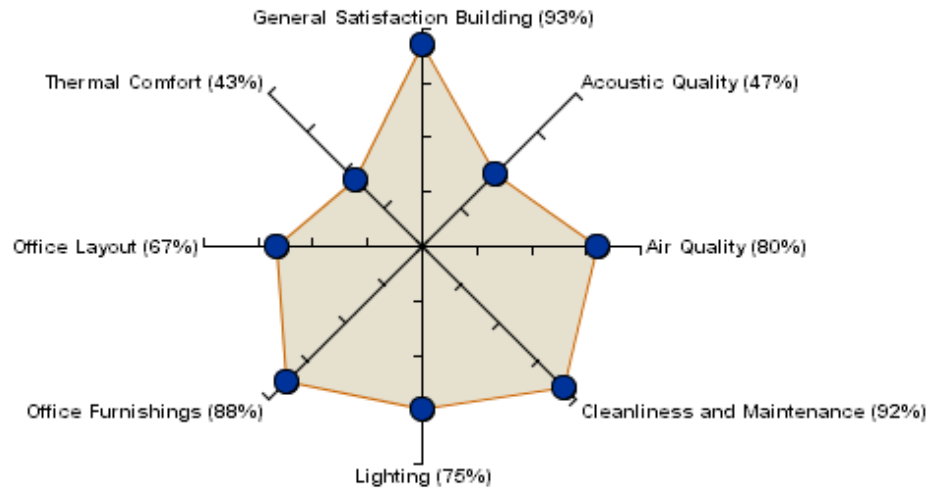
Occupant Survey Report

Survey Dates: 7/19/2011 through 8/1/2011

Center for the Built Environment

University of California, Berkeley

Satisfaction in Core Survey Categories



C B E

1.1 How to Use This Report

This report contains a lot of detail about this building. You can use this report in different ways depending on the level of detail you need. The first section, the executive summary, is a high-level overview of the building's performance. It contains basic metrics by category. Read this section if you need a general understanding of the building's performance or its relationship to other buildings. This section answers 'how.' How is the building performing from the occupants' perspective.

Section two contains information at the question level. Here you can get specific information about the drivers behind the building's score in a particular category. You can also find information about occupant responses to a particular question. This section answers 'what.' What is contributing to this level of perceived performance?

Section three contains information from and about the occupants. This is where you look for demographic information and information about how occupants use the building. You can also find comments from occupants in this section. This section answers 'who.' Who is using the building?

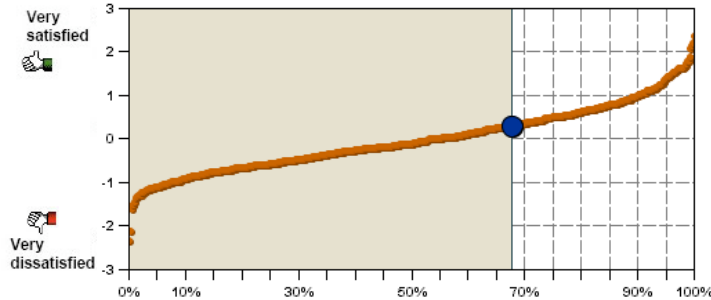
One of the most powerful uses of this report is diagnostic. The survey report gives you information about what's going right (or not so right) in your building. With this information you can make informed decisions about how to improve your buildings performance.

1.2 Building Scorecard

Performance of Clif Bar & Company Headquarters in core survey categories

Acoustic Quality

68%
Percentile

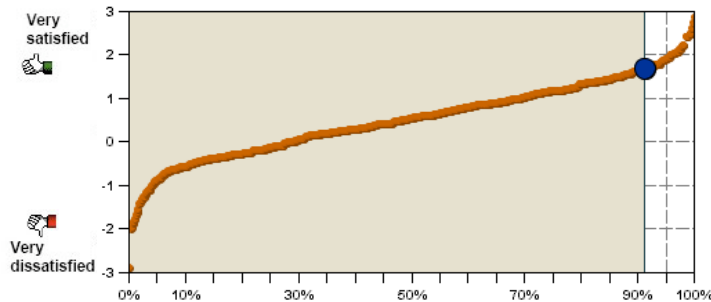


0.31
Mean Response

47%
Satisfied

Air Quality

91%
Percentile

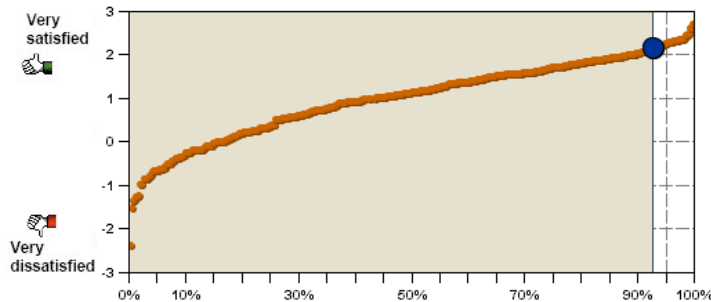


1.69
Mean Response

80%
Satisfied

Cleanliness and Maintenance

93%
Percentile

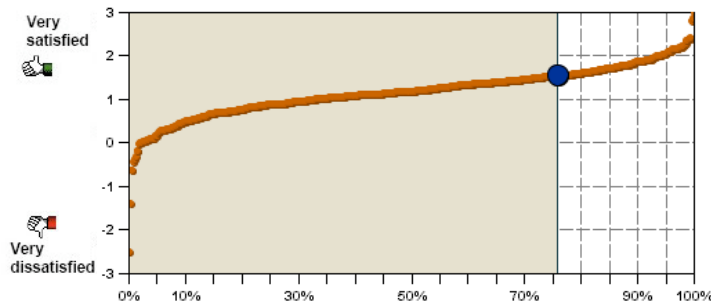


2.17
Mean Response

92%
Satisfied

Lighting

76%
Percentile



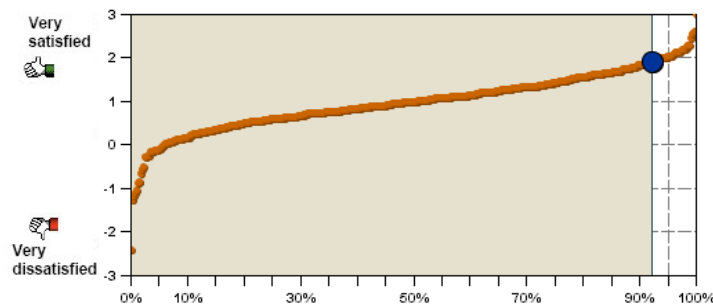
1.56
Mean Response

75%
Satisfied

Performance of Clif Bar & Company Headquarters in core survey categories

Office Furnishings

92%
Percentile

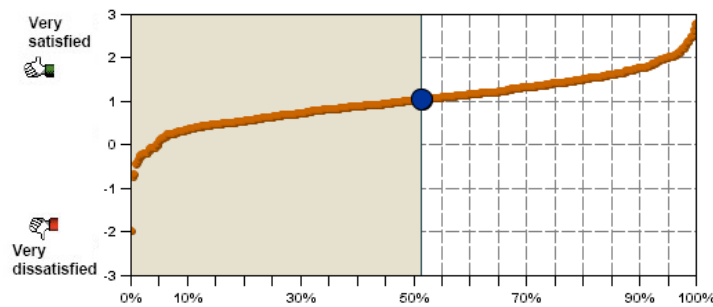


1.93
Mean Response

88%
Satisfied

Office Layout

51%
Percentile

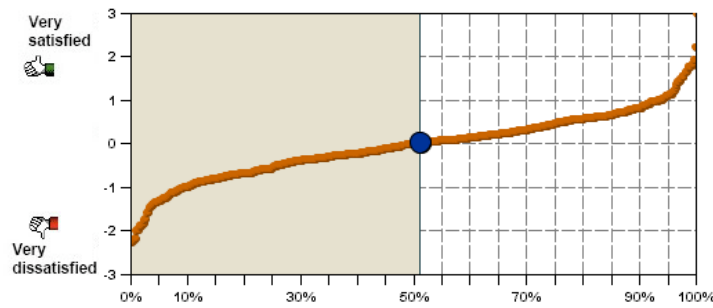


1.06
Mean Response

67%
Satisfied

Thermal Comfort

51%
Percentile



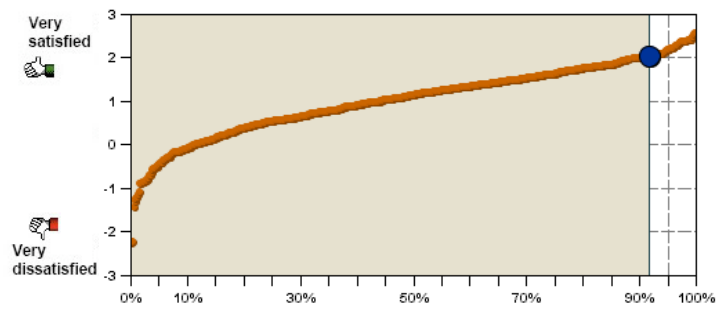
0.04
Mean Response

43%
Satisfied

Performance of Clif Bar & Company Headquarters in additional survey categories

General Satisfaction-Building

92%
Percentile

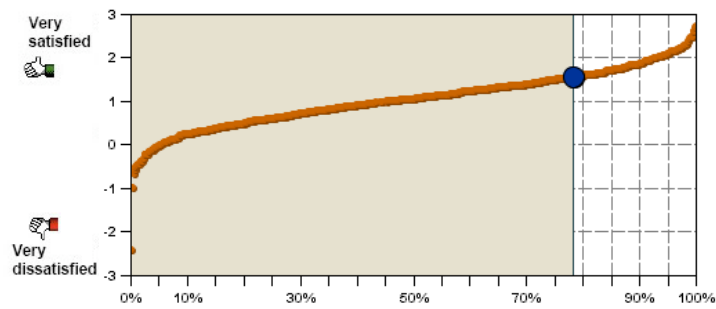


2.05
Mean Response

93%
Satisfied

General Satisfaction-Workspace

78%
Percentile

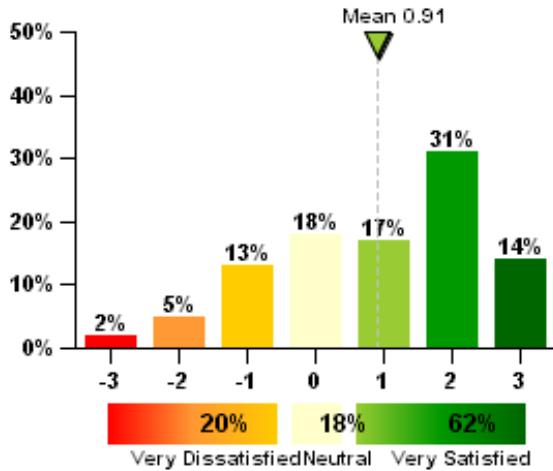


1.56
Mean Response

83%
Satisfied

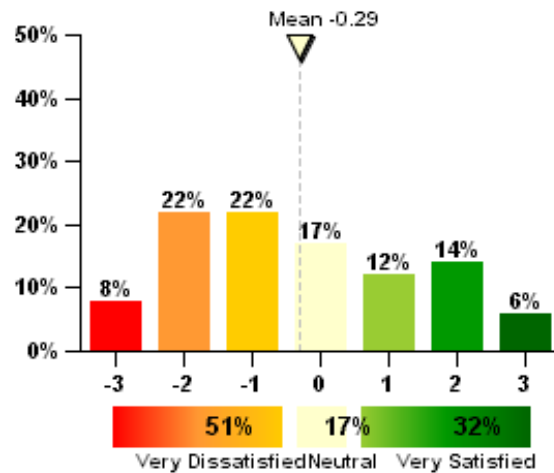
2.1 Acoustic Quality

How satisfied are you with the noise level in your workspace?



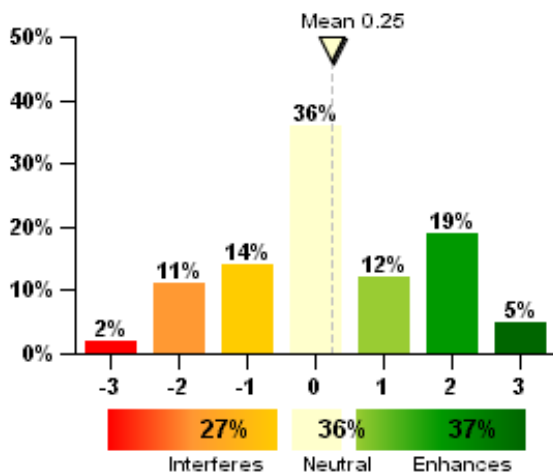
N=130

How satisfied are you with the sound privacy in your workspace (ability to have conversations without your neighbors overhearing and vice versa)?



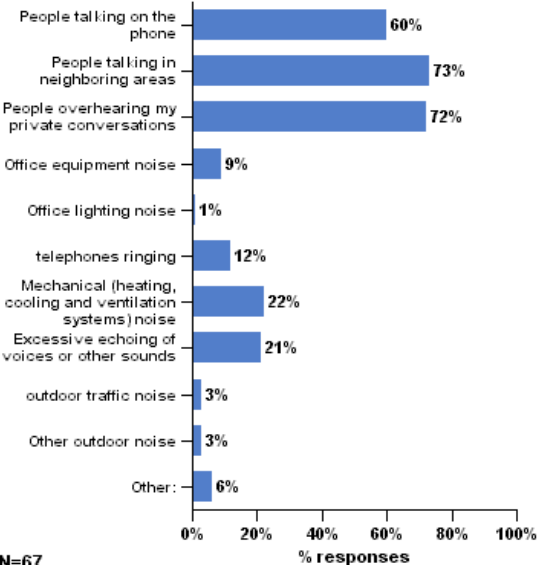
N=130

Overall, does the acoustic quality in your workspace enhance or interfere with your ability to get your job done?



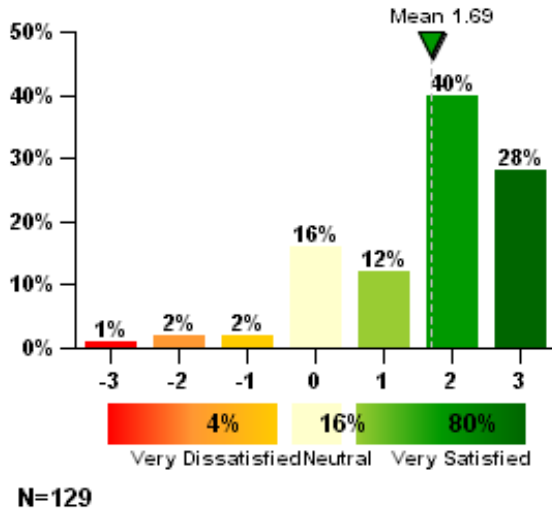
N=130

You have said you are dissatisfied with the acoustics in your workspace. Which of the following contribute to this problem? (check all that apply)



2.2 Air Quality

How satisfied are you with the air quality in your workspace (i.e. stuffy/stale air, cleanliness, odors)?



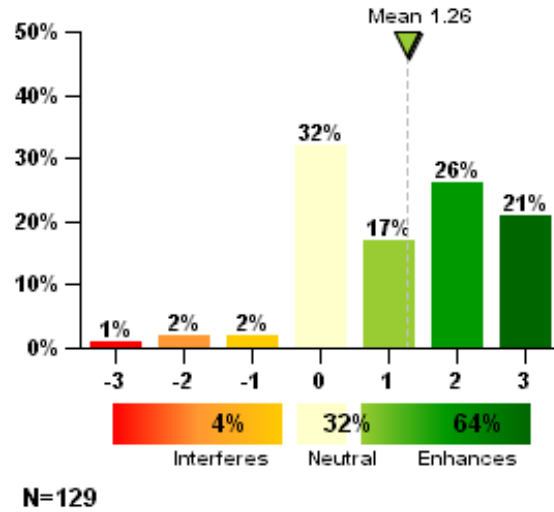
Air is stuffy/stale

Due to the limited number of responses to this question, its chart is not displayed

Air smells bad (odors)

Due to the limited number of responses to this question, its chart is not displayed

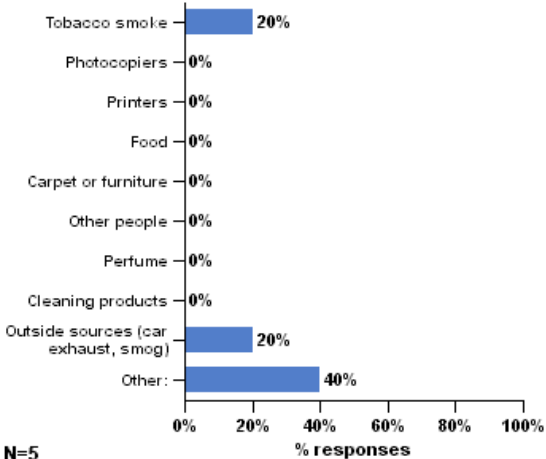
Overall, does the air quality in your workspace enhance or interfere with your ability to get your job done?



Air is not clean

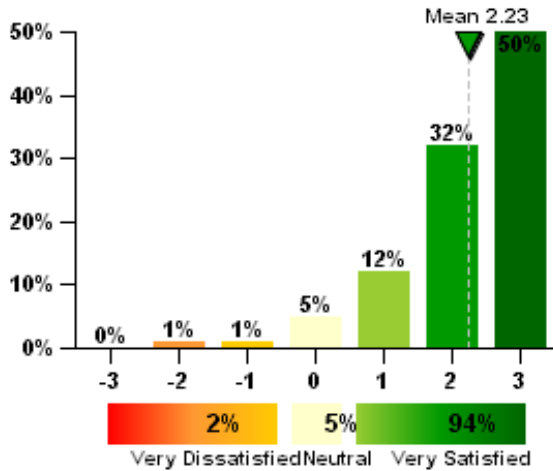
Due to the limited number of responses to this question, its chart is not displayed

If there is an odor problem, which of the following contribute to this problem? (check all that apply)



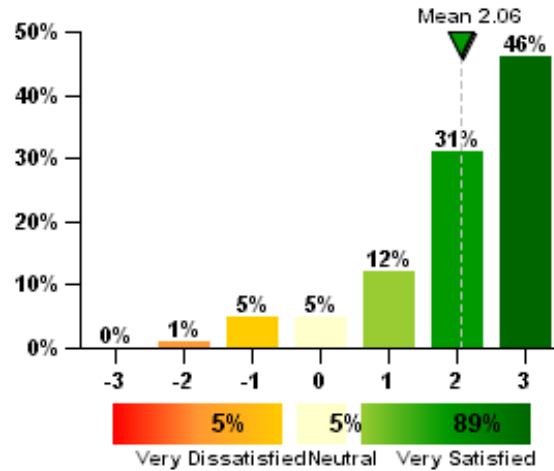
2.3 Cleanliness and Maintenance

How satisfied are you with general cleanliness of the overall building?



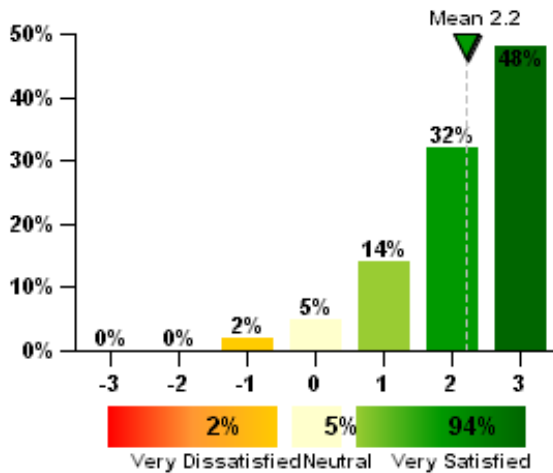
N=132

How satisfied are you with cleaning service provided for your workspace?



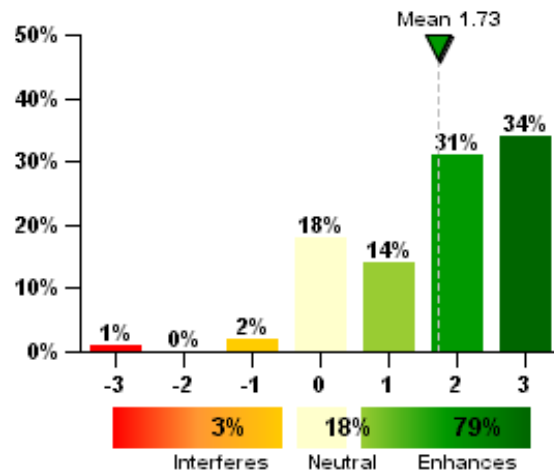
N=130

How satisfied are you with general maintenance of the building?



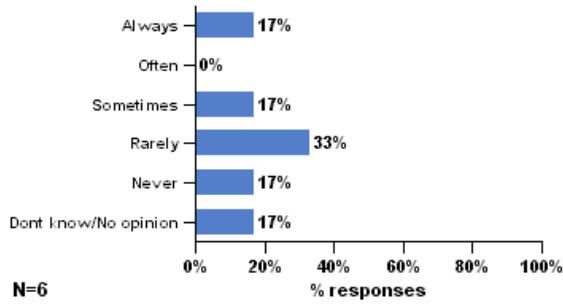
N=130

Does the cleanliness and maintenance of this building enhance or interfere with your ability to get your job done?

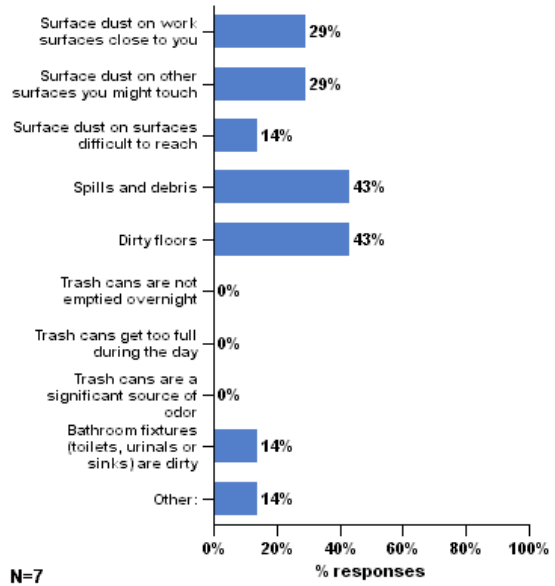


N=131

You have told us that you are dissatisfied with the cleaning service provided for your workspace. How often do you have significant problems?

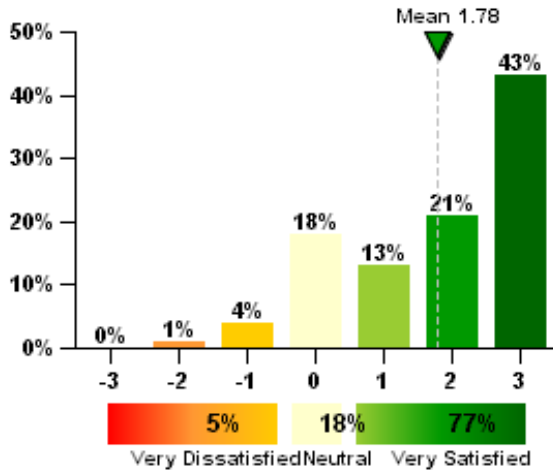


Which of the following contribute to this dissatisfaction? (check all that apply)



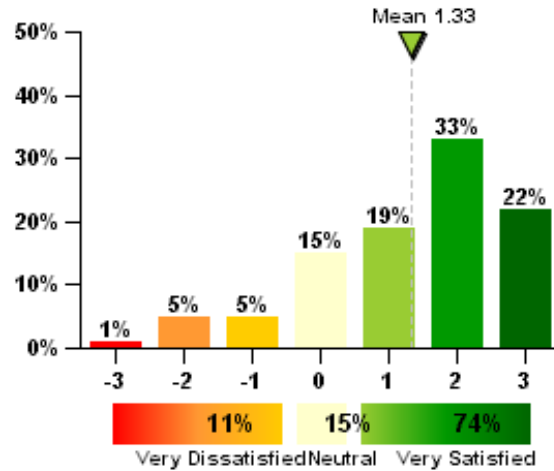
2.4 Lighting

How satisfied are you with the amount of light in your workspace?



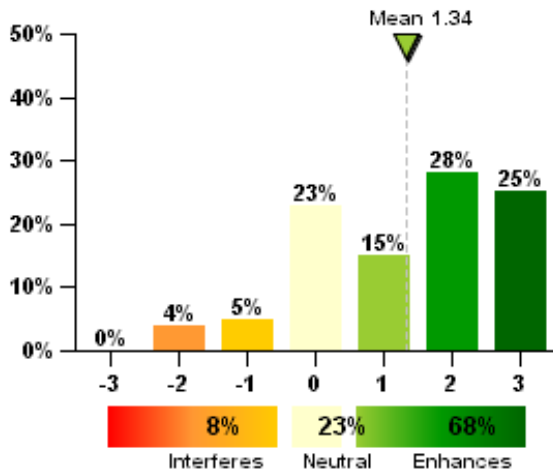
N=130

How satisfied are you with the visual comfort of the lighting (e.g., glare, reflections, contrast)?



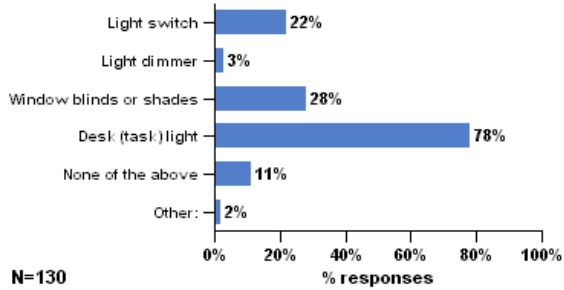
N=130

Overall, does the lighting quality enhance or interfere with your ability to get your job done?

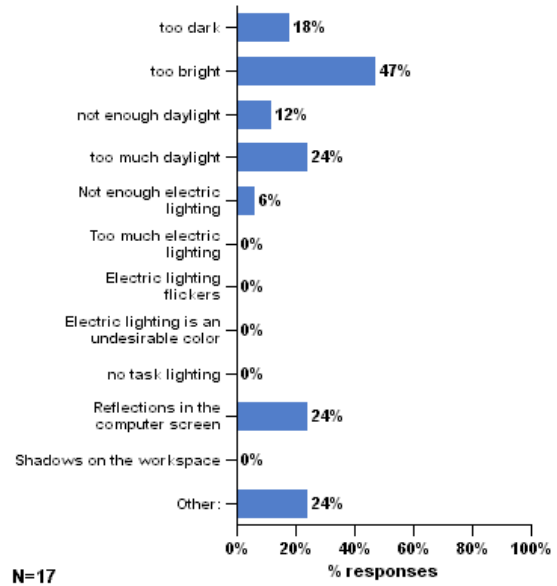


N=130

Which of the following controls do you have over the lighting in your workspace? (check all that apply)

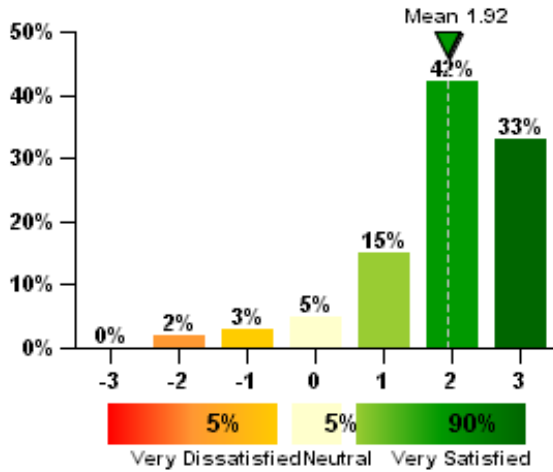


You have said that you are dissatisfied with the lighting in your workspace. Which of the following contribute to your dissatisfaction? (check all that apply)



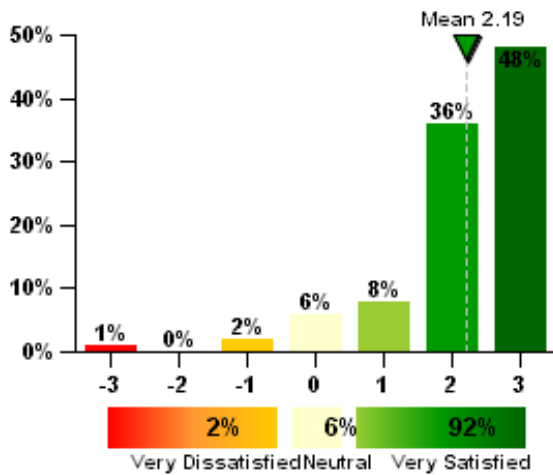
2.5 Office Furnishings

How satisfied are you with the comfort of your office furnishings (chair, desk, computer, equipment, etc.)?



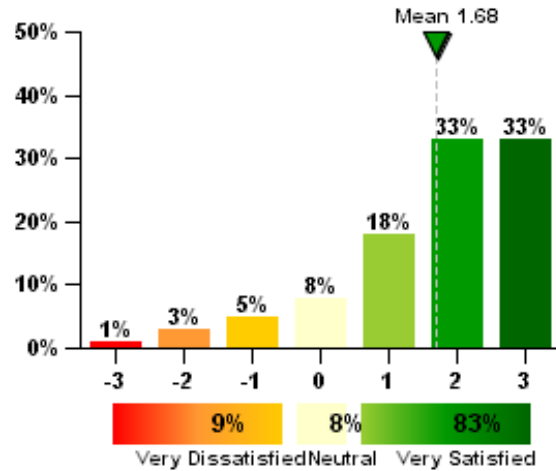
N=132

How satisfied are you with the colors and textures of flooring, furniture and surface finishes?



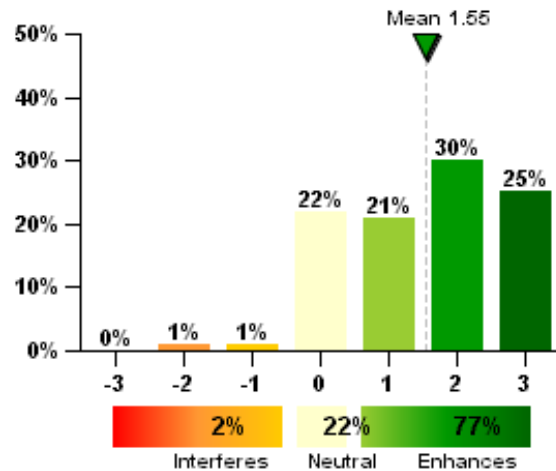
N=132

How satisfied are you with your ability to adjust your furniture to meet your needs?



N=131

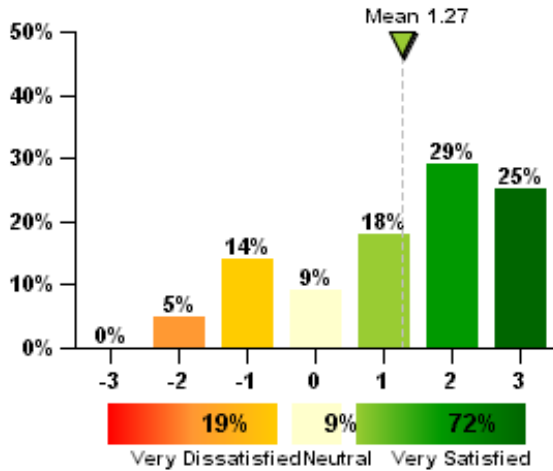
Do your office furnishings enhance or interfere with your ability to get your job done?



N=132

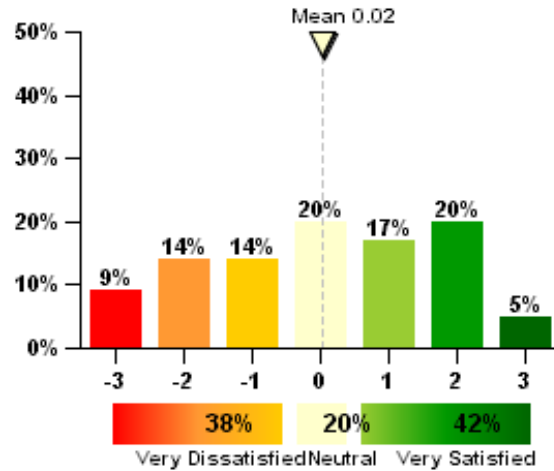
2.6 Office Layout

How satisfied are you with the amount of space available for individual work and storage?



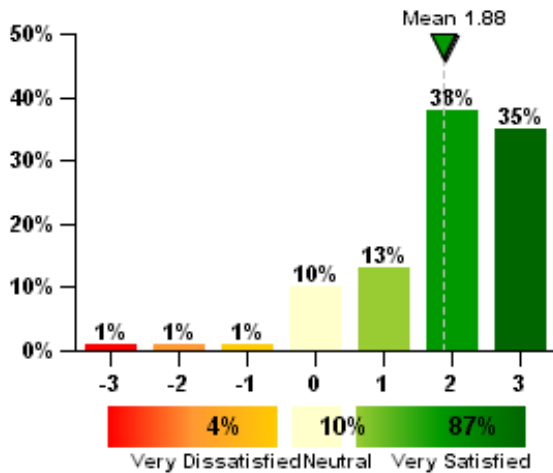
N=133

How satisfied are you with the level of visual privacy?



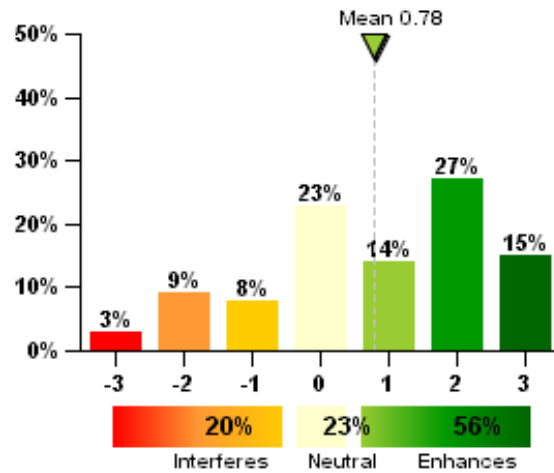
N=133

How satisfied are you with ease of interaction with co-workers?



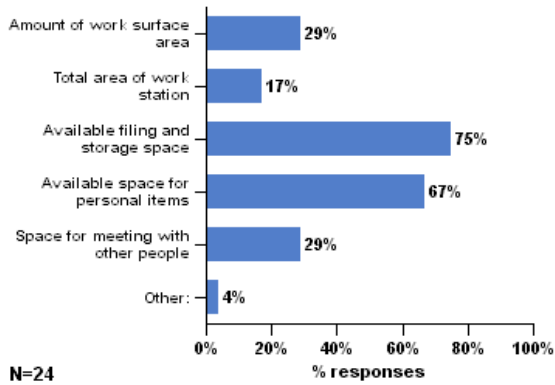
N=134

Overall, does the office layout enhance or interfere with your ability to get your job done?

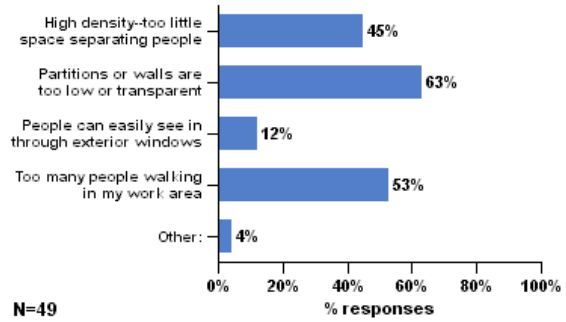


N=133

You have said that you are dissatisfied with the amount of space available for individual work and storage. Which of the following contribute to your dissatisfaction? (check all that apply)



You have said that you are dissatisfied with the level of visual privacy. Which of the following contribute to your dissatisfaction? (check all that apply)

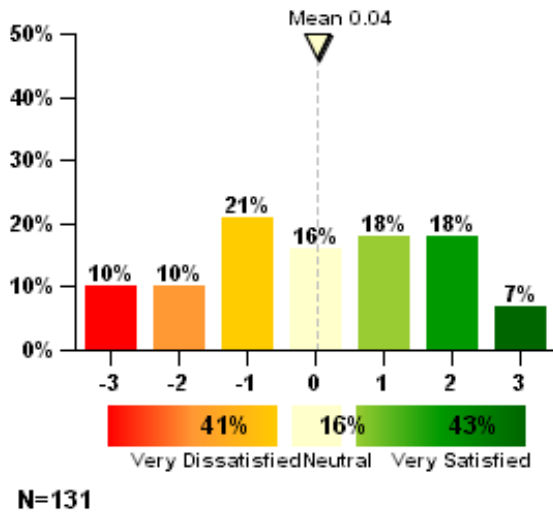


You have said that you are dissatisfied with the ease of interaction with co-workers. Which of the following contribute to your dissatisfaction? (check all that apply)

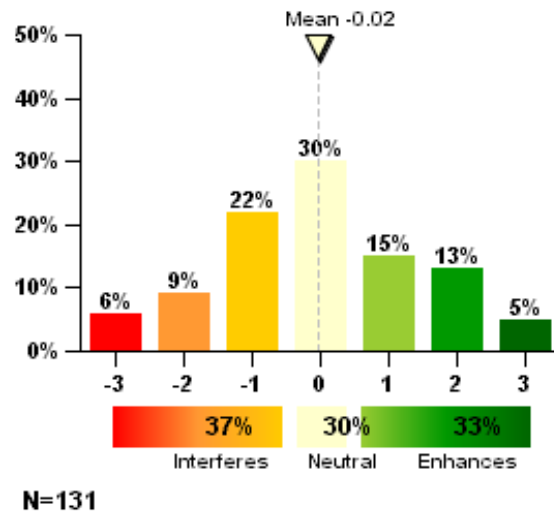
Due to the limited number of responses to this question, its chart is not displayed

2.7 Thermal Comfort

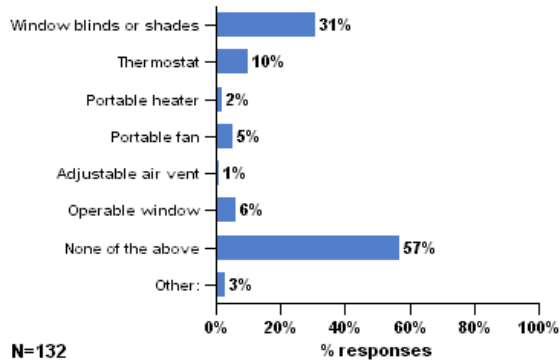
How satisfied are you with the temperature in your workspace?



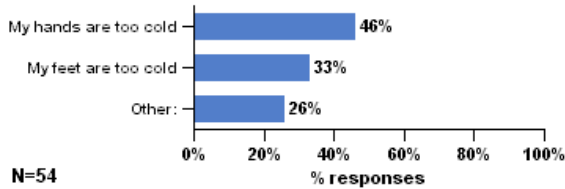
Overall, does your thermal comfort in your workspace enhance or interfere with your ability to get your job done?



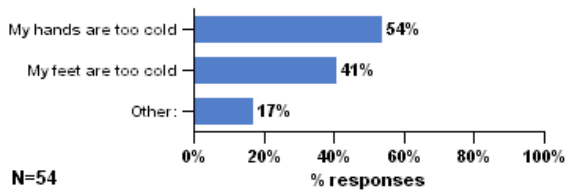
Which of the following do you personally adjust or control in your workspace? (check all that apply)



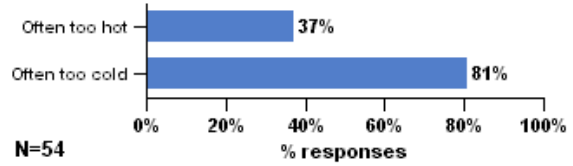
In warm/hot weather... (check all that apply)



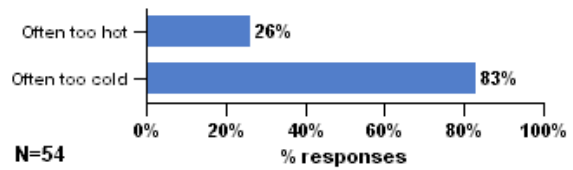
In cool/cold weather... (check all that apply)



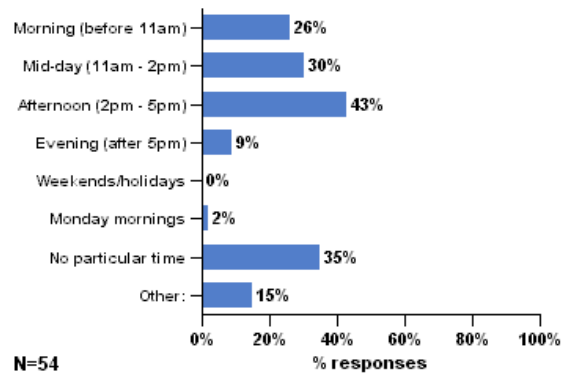
In warm/hot weather, the temperature in my workspace is: (check all that apply)



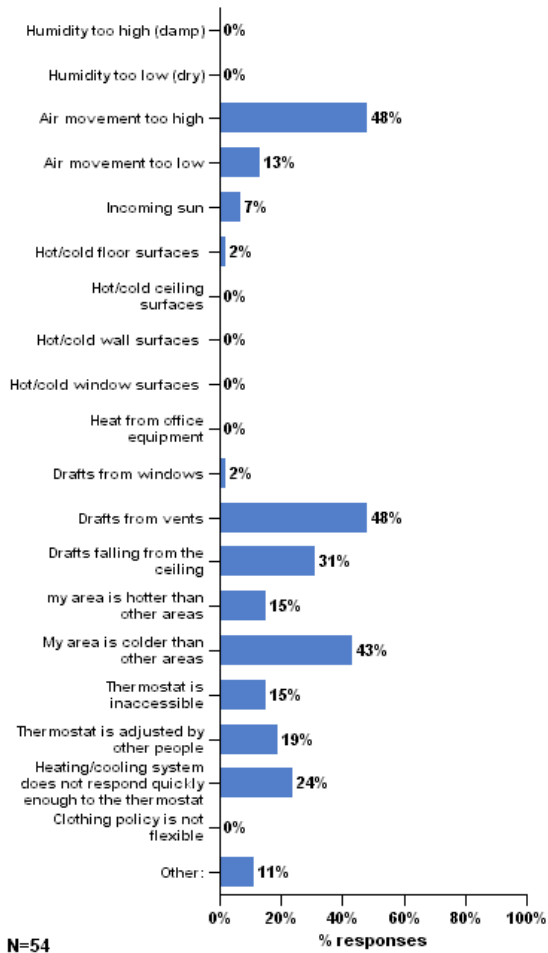
In cool/cold weather, the temperature in my workspace is: (check all that apply)



When is this most often a problem? (check all that apply)

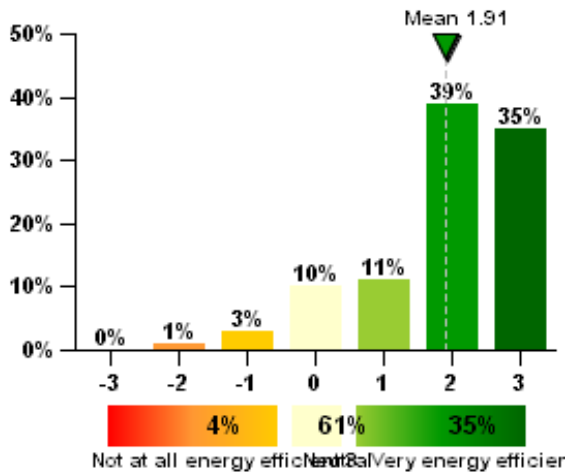


How would you best describe the source of this discomfort? (check all that apply)



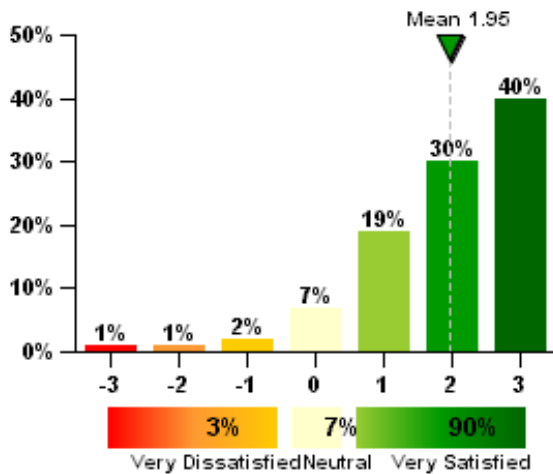
2.8 Building Features

Considering energy use, how efficiently is this building performing in your opinion?



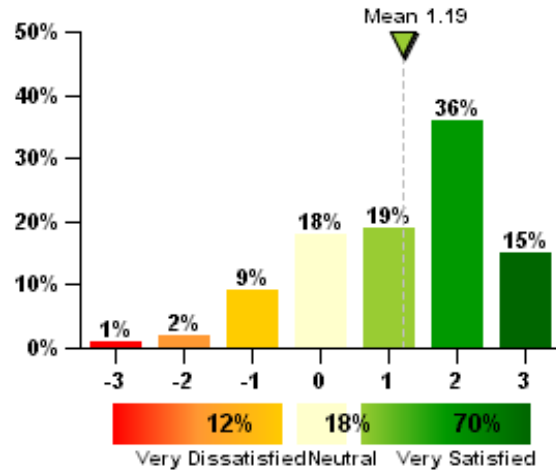
N=122

Recycling systems



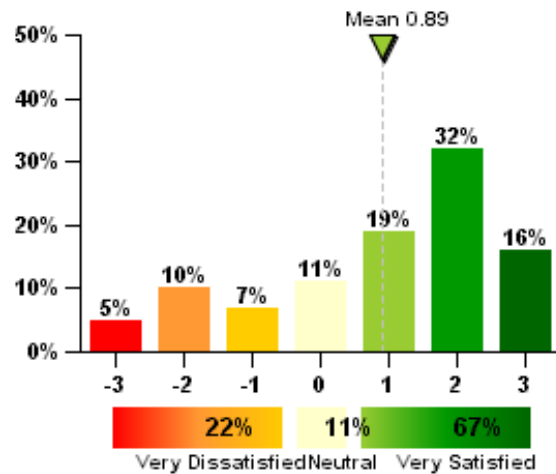
N=126

Window coverings



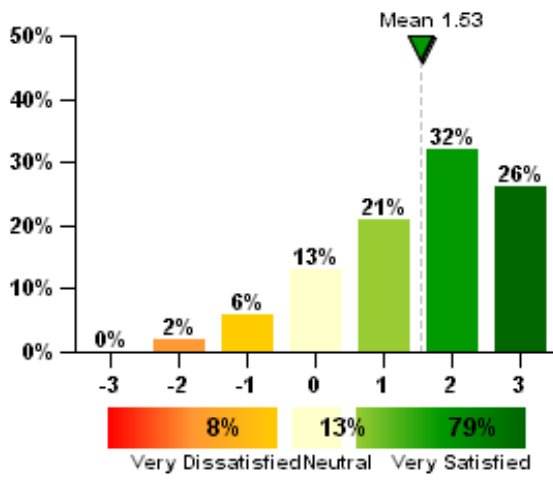
N=109

Bike parking



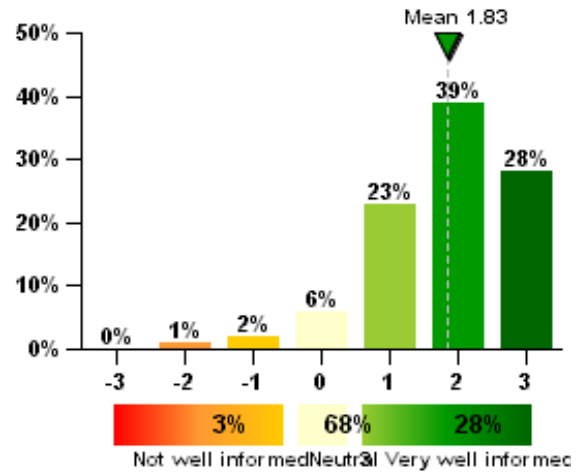
N=73

Conference rooms



N=126

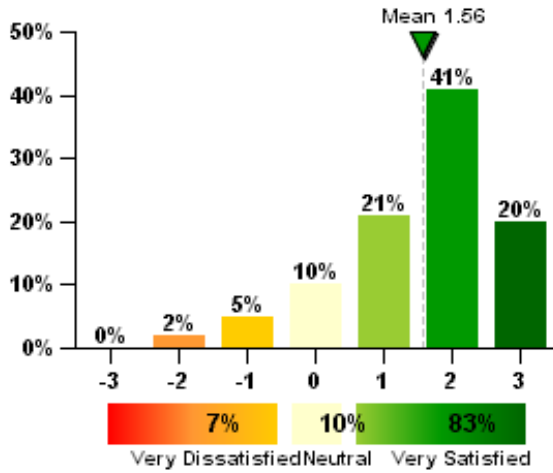
How well informed do you feel about using the above mentioned features in this building?



N=130

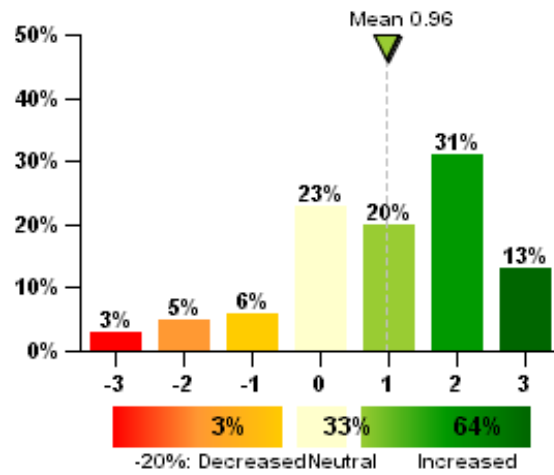
2.9 General Comments

All things considered, how satisfied are you with your personal workspace?



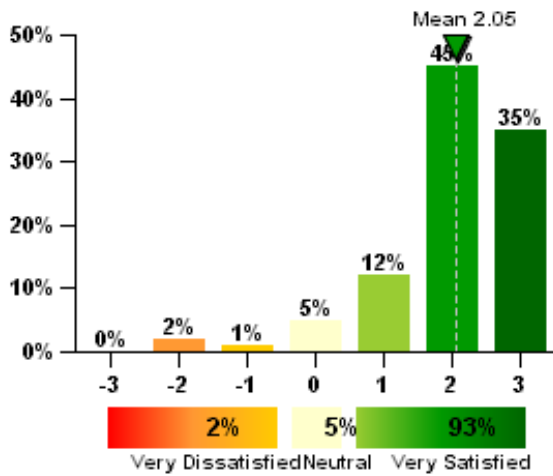
N=128

Please estimate how your productivity is increased or decreased by the environmental conditions in this building (e.g. thermal, lighting, acoustics, cleanliness):



N=127

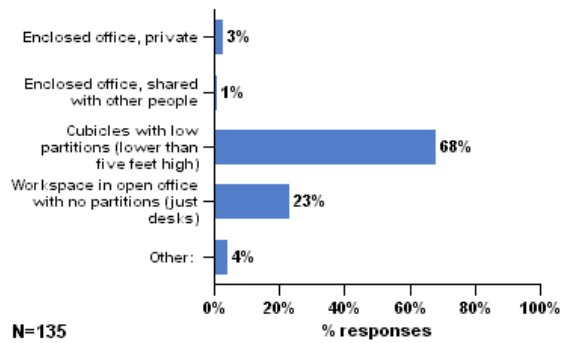
How satisfied are you with the building overall?



N=130

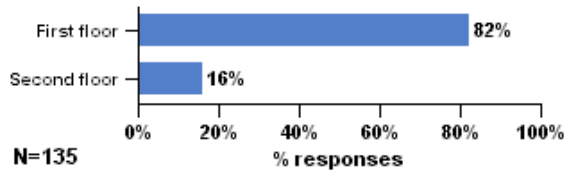
2.10 Personal Workspace Description

Which of the following best describes your personal workspace?

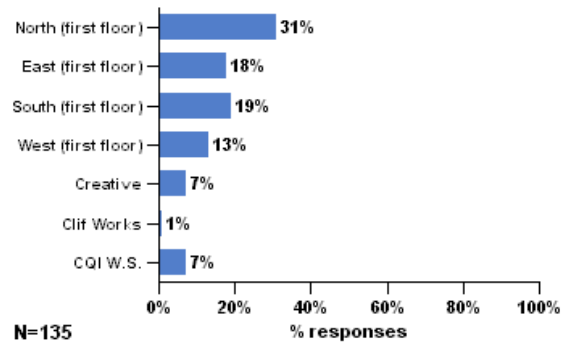


2.11 Personal Workspace Location

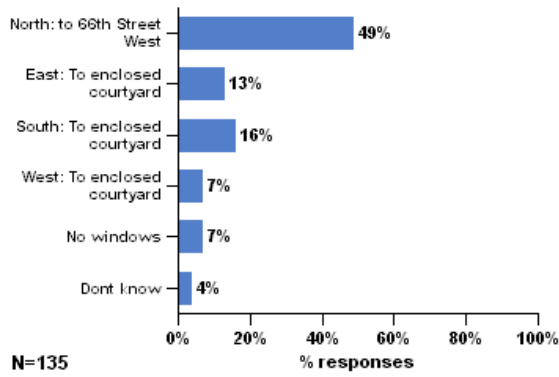
On which floor is your workspace located?



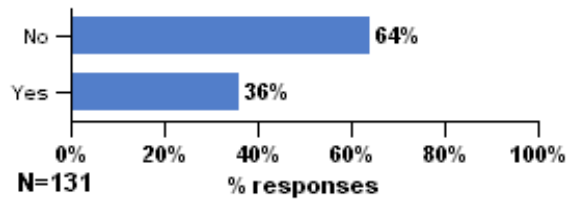
In which area of the building is your workspace located?



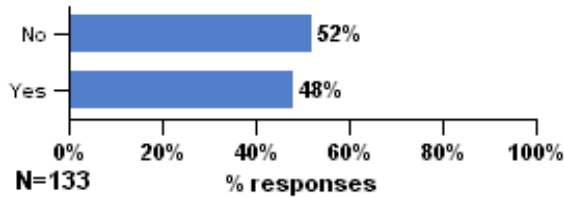
To which direction do the windows closest to your workspace face?



Are you near an exterior wall (within 15 feet)?

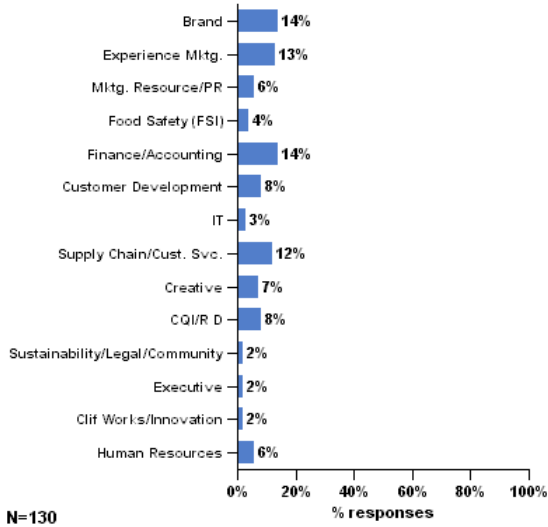


Are you near a window (within 15 feet)?

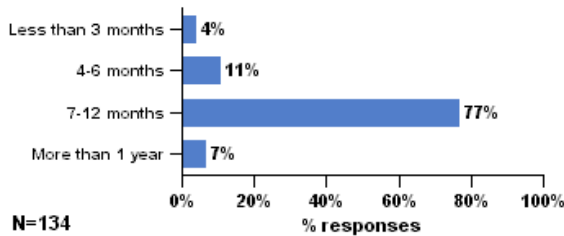


3.1 Background

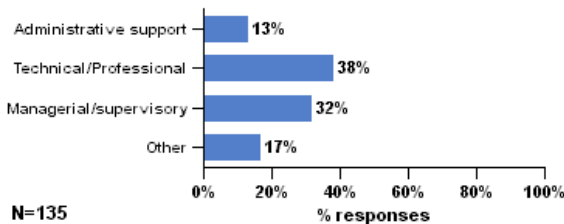
Which organization do you work for?



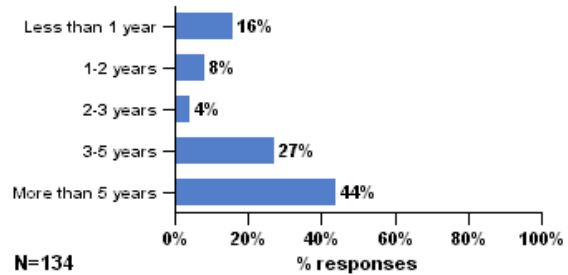
How long have you been working at your present workspace?



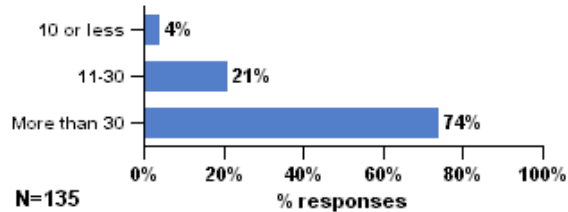
How would you describe the work you do?



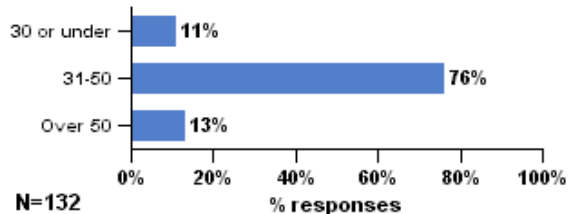
How many years have you worked in the organization?



In a typical week, how many hours do you spend in your workspace?



What is your age?



What is your gender?

