

# UCSF - Ray and Dagmar Dolby Regeneration Medicine Building

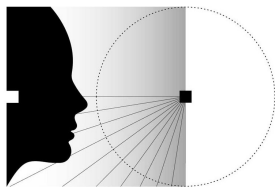
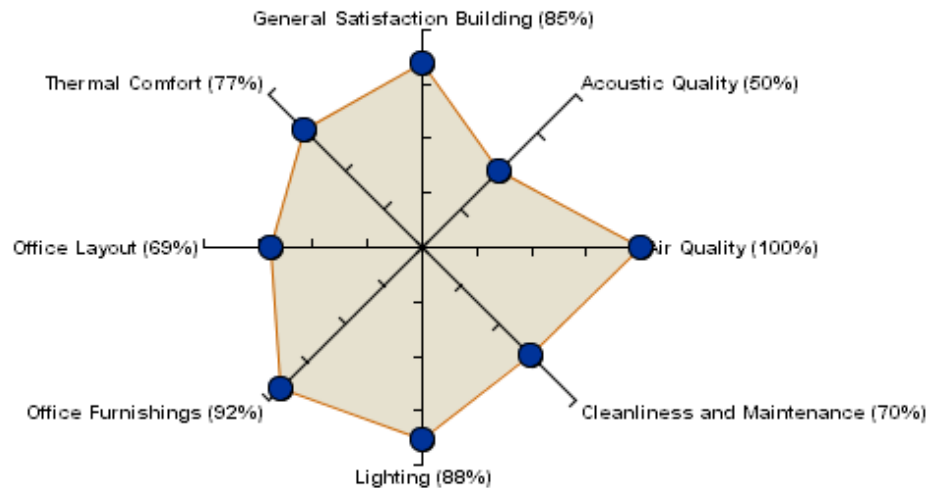
## Occupant Survey Report

Survey Dates: 2/21/2012 through 3/6/2012

Center for the Built Environment

University of California, Berkeley

### Satisfaction in Core Survey Categories



C B E

## 1.1 How to Use This Report

This report contains a lot of detail about this building. You can use this report in different ways depending on the level of detail you need. The first section, the executive summary, is a high-level overview of the building's performance. It contains basic metrics by category. Read this section if you need a general understanding of the building's performance or its relationship to other buildings. This section answers 'how.' How is the building performing from the occupants' perspective.

Section two contains information at the question level. Here you can get specific information about the drivers behind the building's score in a particular category. You can also find information about occupant responses to a particular question. This section answers 'what.' What is contributing to this level of perceived performance?

Section three contains information from and about the occupants. This is where you look for demographic information and information about how occupants use the building. You can also find comments from occupants in this section. This section answers 'who.' Who is using the building?

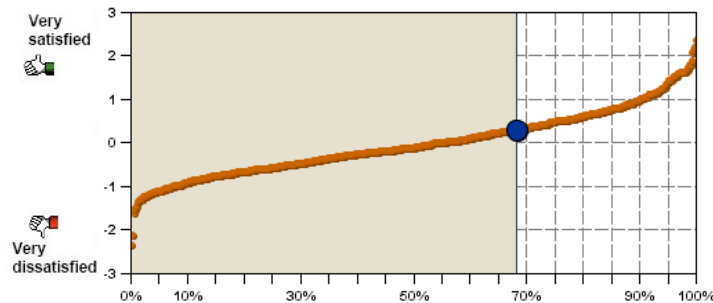
One of the most powerful uses of this report is diagnostic. The survey report gives you information about what's going right (or not so right) in your building. With this information you can make informed decisions about how to improve your buildings performance.

## 1.2 Building Scorecard

Performance of UCSF - Ray and Dagmar Dolby Regeneration Medicine Building in core survey categories

### Acoustic Quality

68%  
Percentile

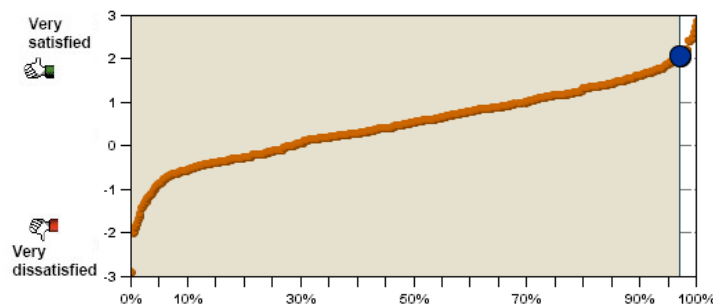


0.31  
Mean Response

50%  
Satisfied

### Air Quality

97%  
Percentile

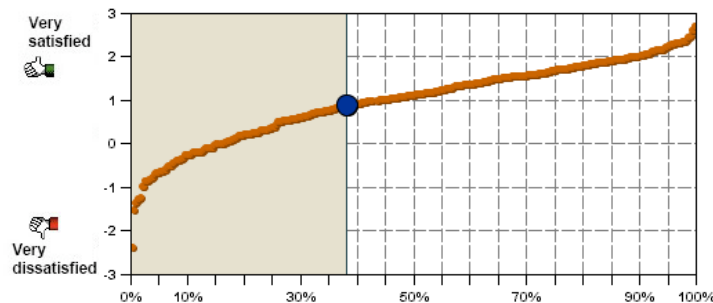


2.08  
Mean Response

100%  
Satisfied

### Cleanliness and Maintenance

38%  
Percentile

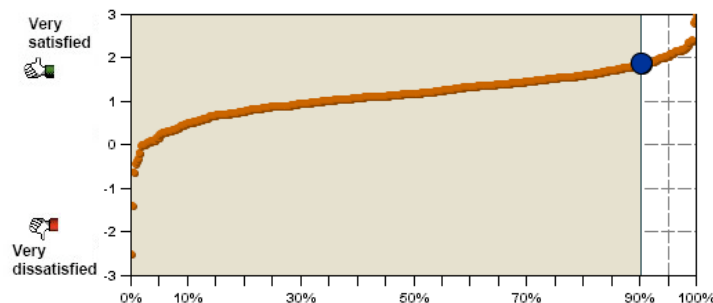


0.92  
Mean Response

70%  
Satisfied

### Lighting

90%  
Percentile



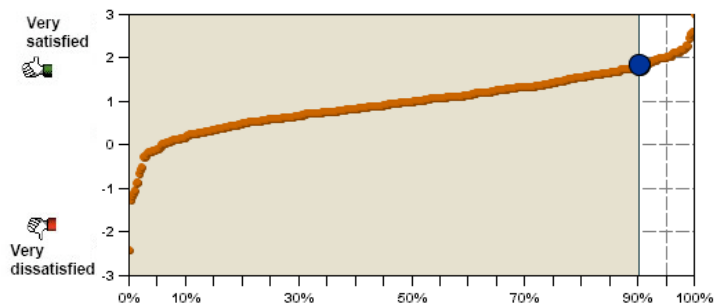
1.88  
Mean Response

88%  
Satisfied

Performance of UCSF - Ray and Dagmar Dolby Regeneration Medicine Building in  
core survey categories

Office  
Furnishings

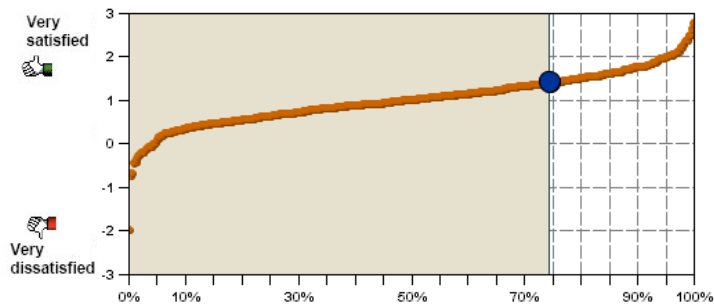
90%  
Percentile



1.85  
Mean Response  
92%  
Satisfied

Office Layout

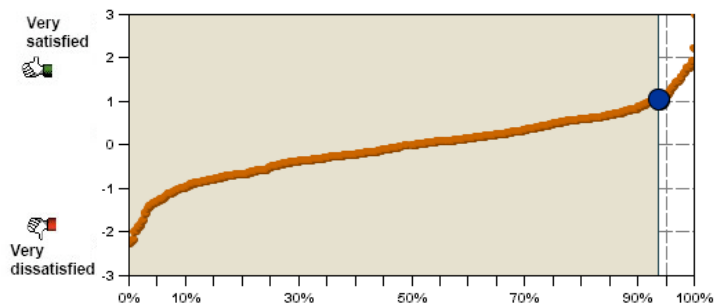
74%  
Percentile



1.44  
Mean Response  
69%  
Satisfied

Thermal  
Comfort

94%  
Percentile

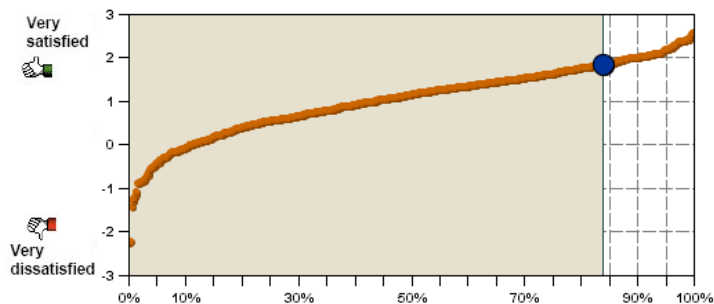


1.08  
Mean Response  
77%  
Satisfied

Performance of UCSF - Ray and Dagmar Dolby Regeneration Medicine Building in additional survey categories

General Satisfaction-Building

84%  
Percentile

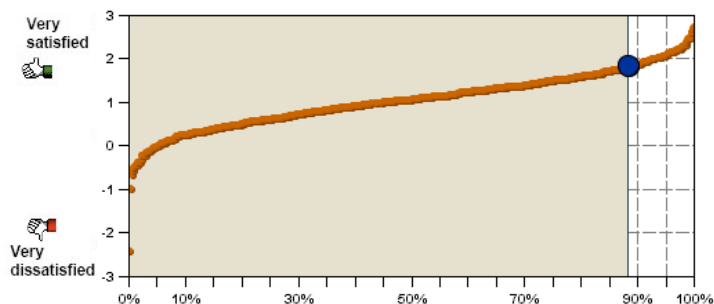


1.85  
Mean Response

85%  
Satisfied

General Satisfaction-Workspace

88%  
Percentile

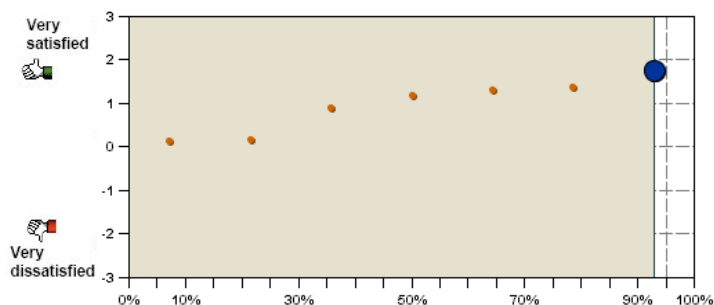


1.85  
Mean Response

92%  
Satisfied

Lab Furnishings

93%  
Percentile

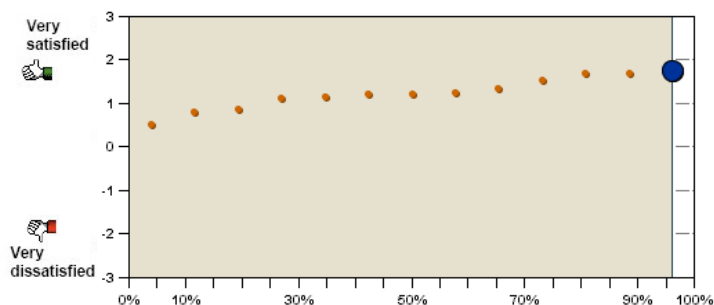


1.76  
Mean Response

82%  
Satisfied

Lab Layout

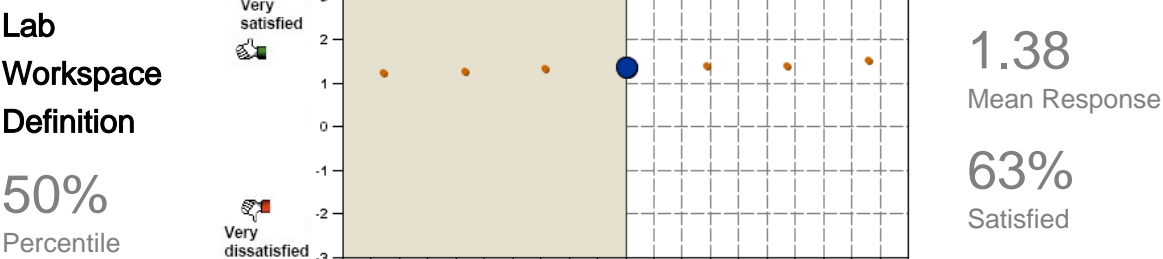
96%  
Percentile



1.77  
Mean Response

80%  
Satisfied

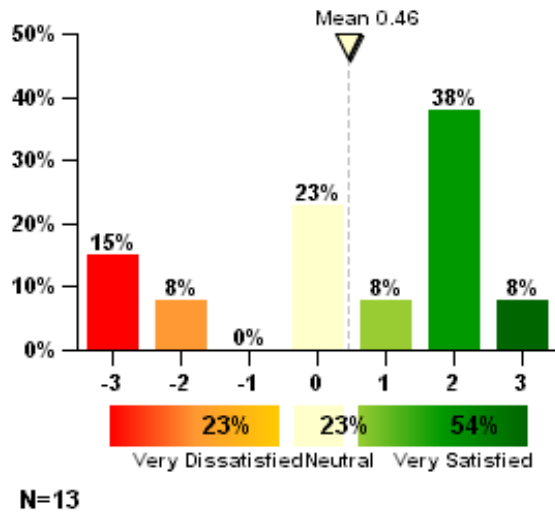
Performance of UCSF - Ray and Dagmar Dolby Regeneration Medicine Building in additional survey categories



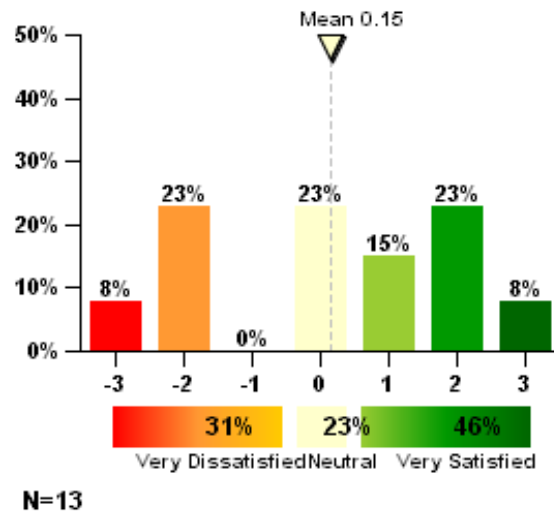
---

## 2.1 Acoustic Quality

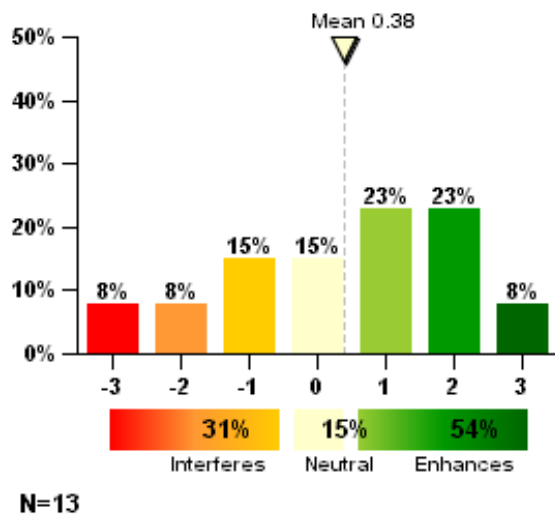
How satisfied are you with the noise level in your workspace?



How satisfied are you with the sound privacy in your workspace (ability to have conversations without your neighbors overhearing and vice versa)?

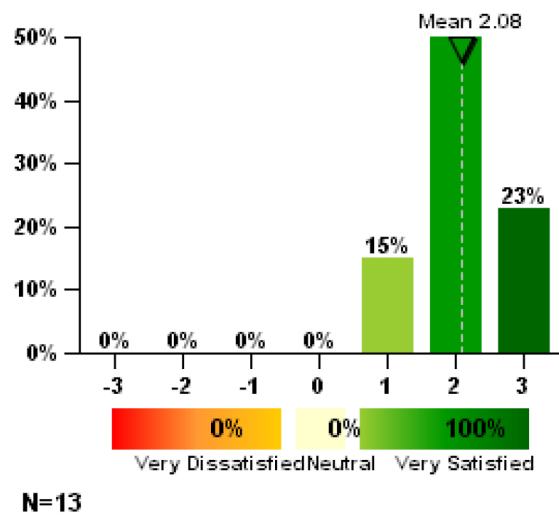


Overall, does the acoustic quality in your workspace enhance or interfere with your ability to get your job done?

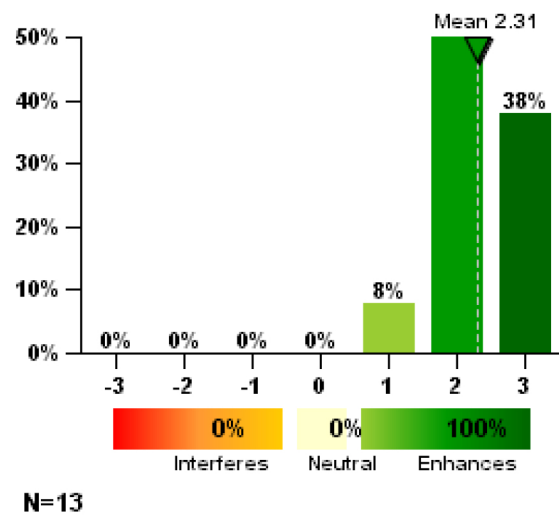


## 2.2 Air Quality

How satisfied are you with the air quality in your workspace (i.e. stuffy/stale air, cleanliness, odors)?



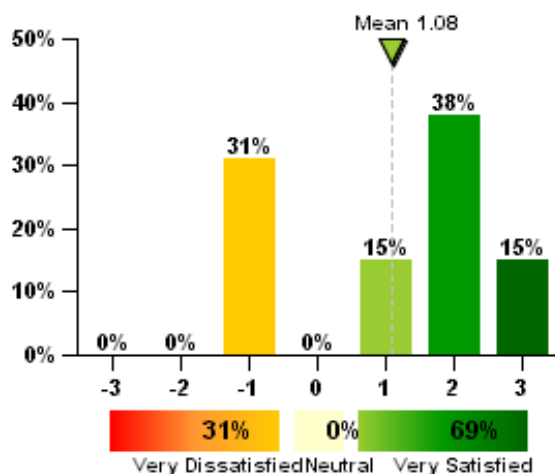
Overall, does the air quality in your workspace enhance or interfere with your ability to get your job done?





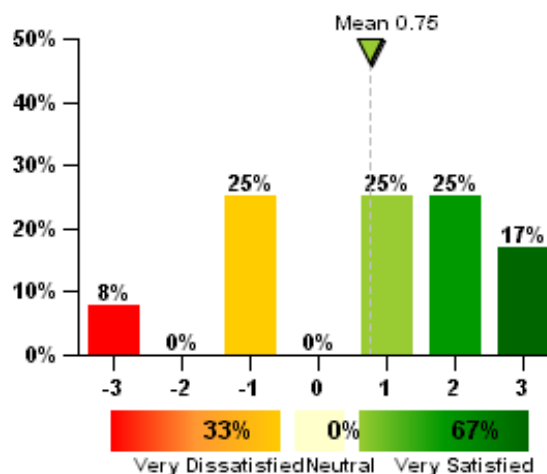
## 2.3 Cleanliness and Maintenance

How satisfied are you with general cleanliness of the overall building?



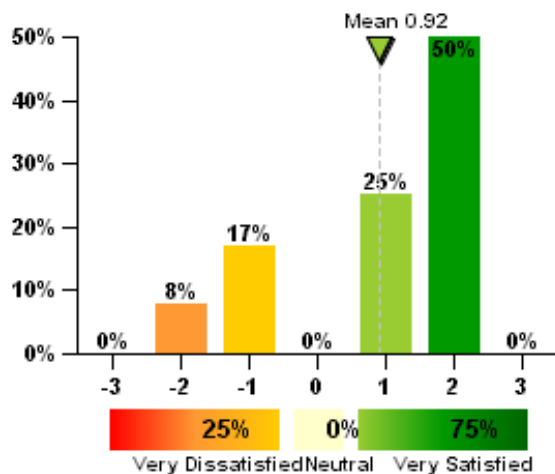
N=13

How satisfied are you with cleaning service provided for your workspace?



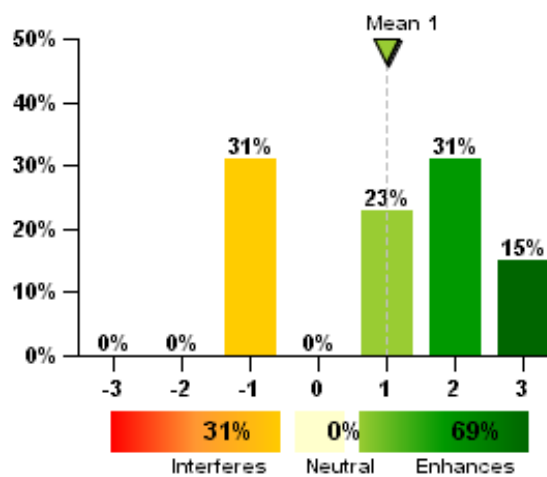
N=12

How satisfied are you with general maintenance of the building?



N=12

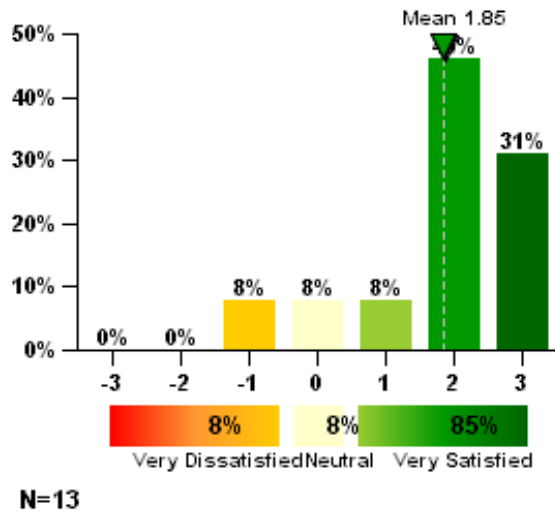
Does the cleanliness and maintenance of this building enhance or interfere with your ability to get your job done?



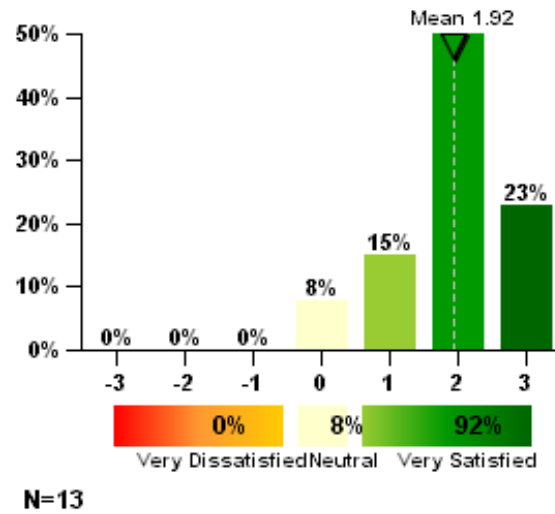
N=13

## 2.4 Lighting

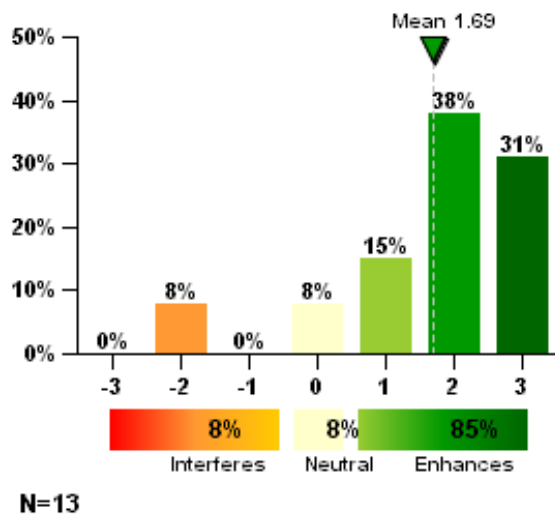
How satisfied are you with the amount of light in your workspace?



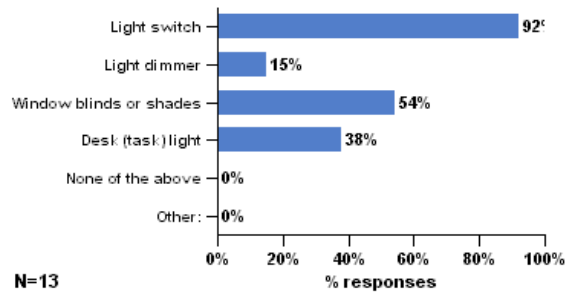
How satisfied are you with the visual comfort of the lighting (e.g., glare, reflections, contrast)?



Overall, does the lighting quality enhance or interfere with your ability to get your job done?

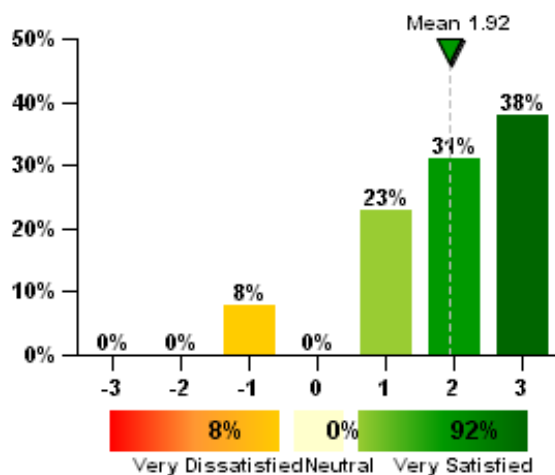


Which of the following controls do you have over the lighting in your workspace? (check all that apply)



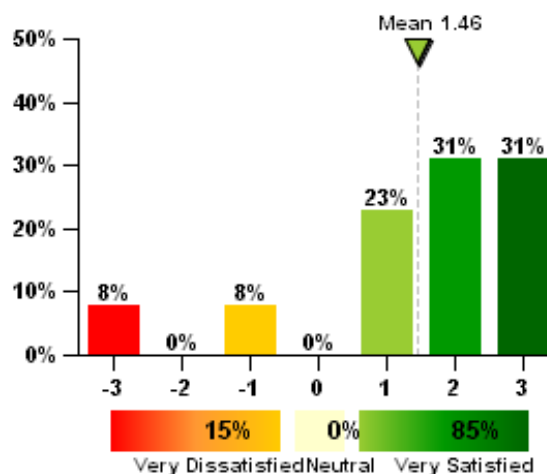
## 2.5 Office Furnishings

How satisfied are you with the comfort of your office furnishings (chair, desk, computer, equipment, etc.)?



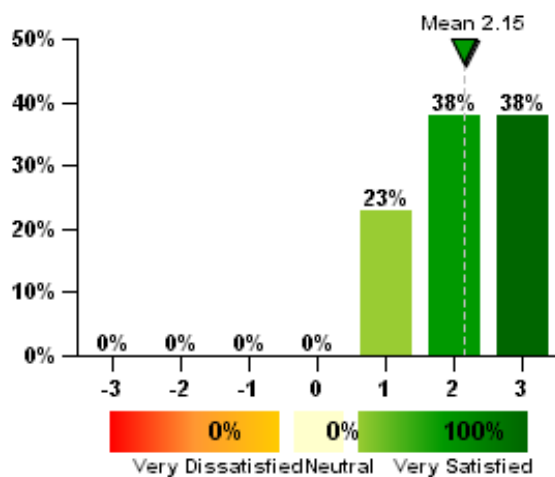
N=13

How satisfied are you with your ability to adjust your furniture to meet your needs?



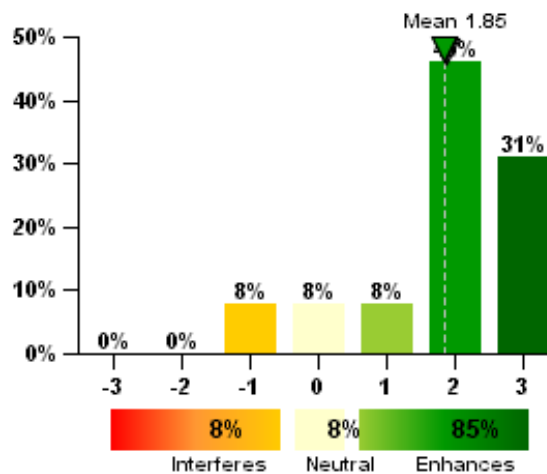
N=13

How satisfied are you with the colors and textures of flooring, furniture and surface finishes?



N=13

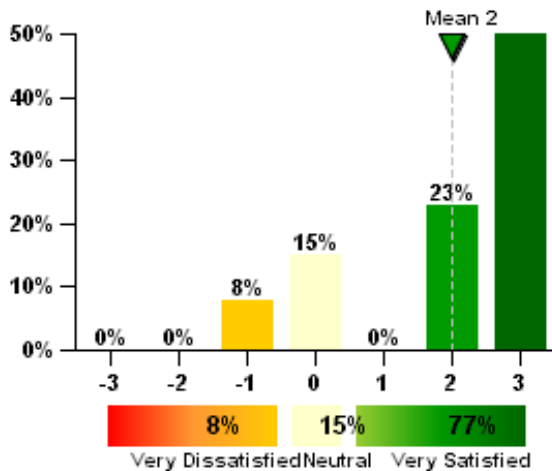
Do your office furnishings enhance or interfere with your ability to get your job done?



N=13

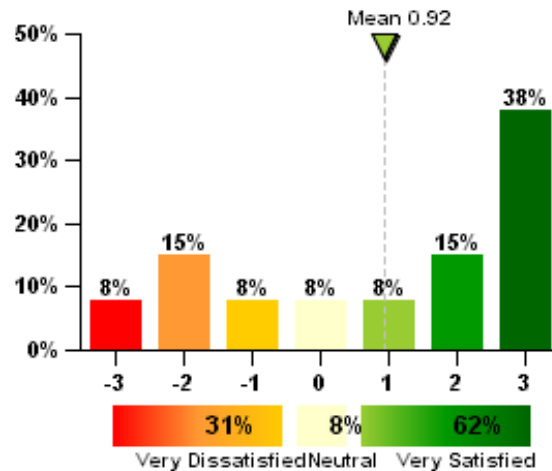
## 2.6 Office Layout

How satisfied are you with the amount of space available for individual work and storage?



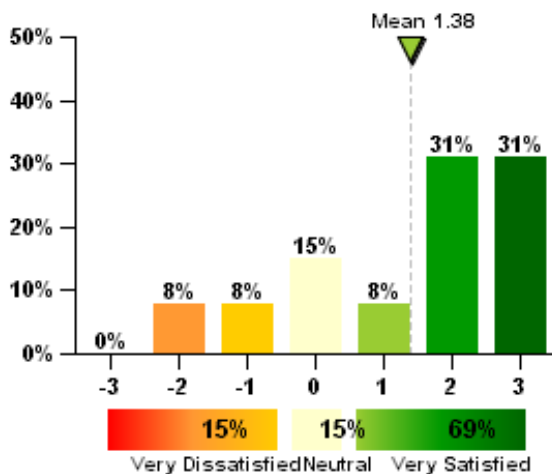
N=13

How satisfied are you with the level of visual privacy?



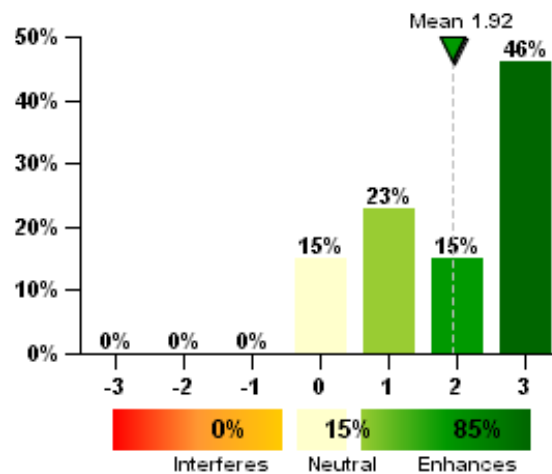
N=13

How satisfied are you with ease of interaction with co-workers?



N=13

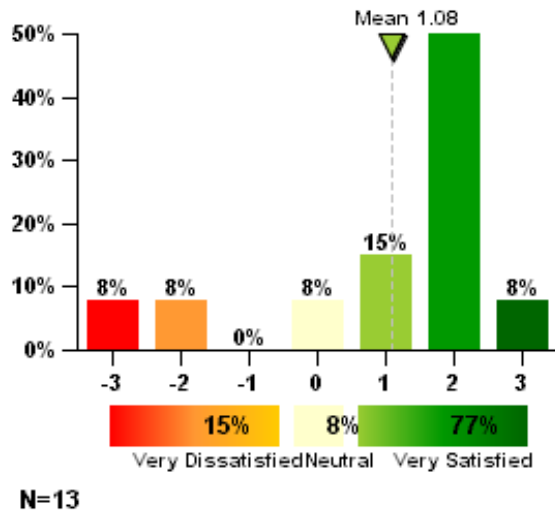
Overall, does the office layout enhance or interfere with your ability to get your job done?



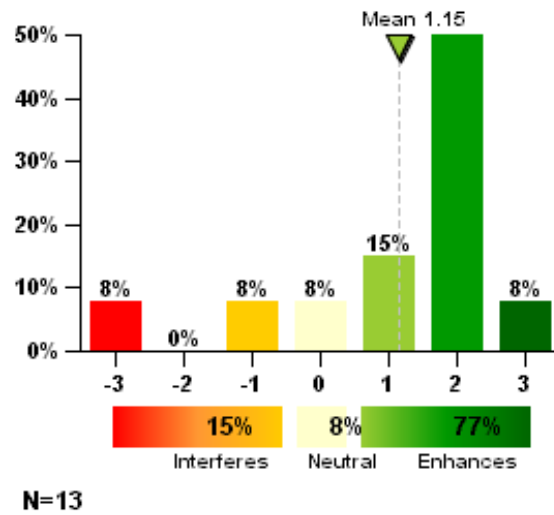
N=13

## 2.7 Thermal Comfort

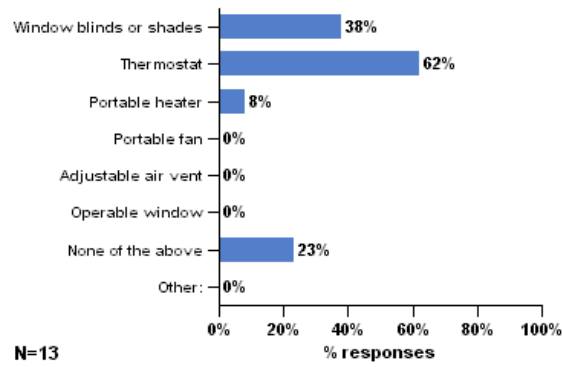
How satisfied are you with the temperature in your workspace?



Overall, does your thermal comfort in your workspace enhance or interfere with your ability to get your job done?

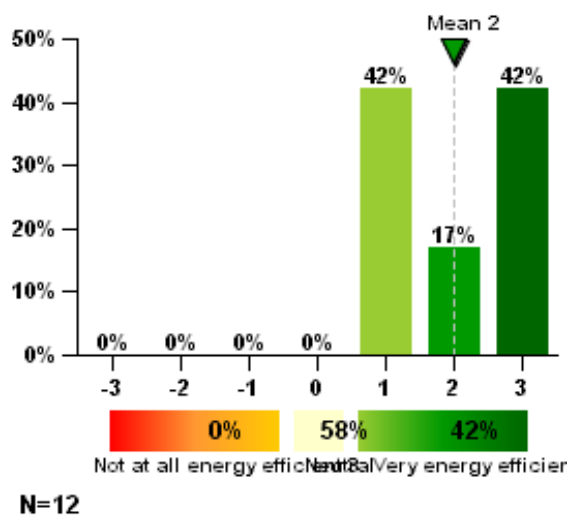


Which of the following do you personally adjust or control in your workspace? (check all that apply)

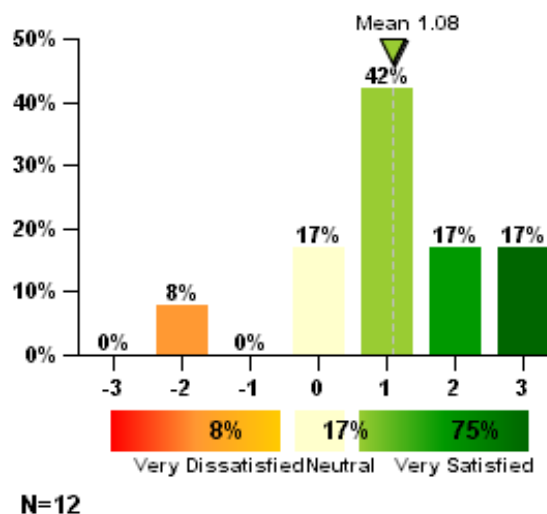


## 2.8 Building Features

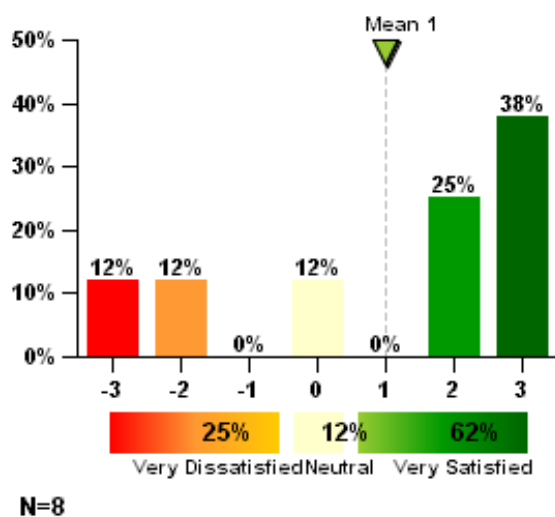
Considering energy use, how efficiently is this building performing in your opinion?



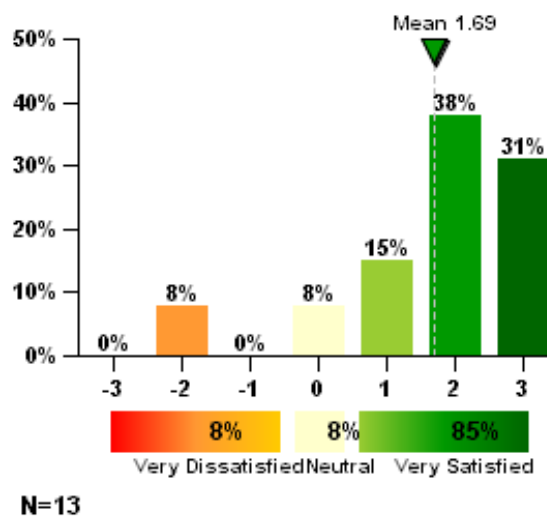
Occupancy sensors for lighting



Low-flow sinks

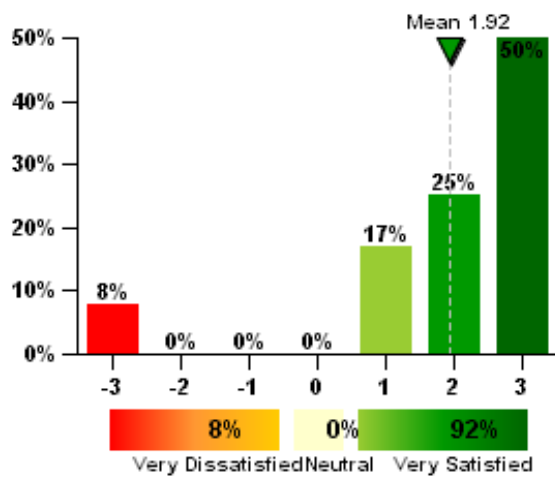


Private meeting rooms/ Board rooms



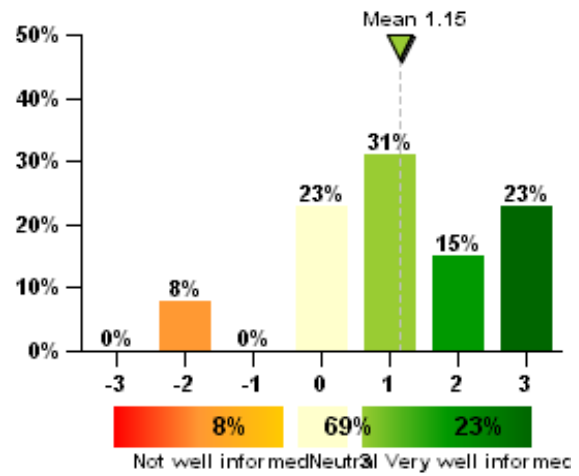


### Green roofs



N=12

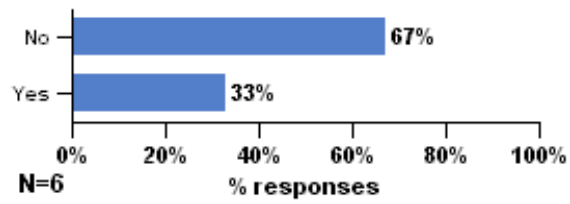
### How well informed do you feel about using the above mentioned features in this building?



N=13

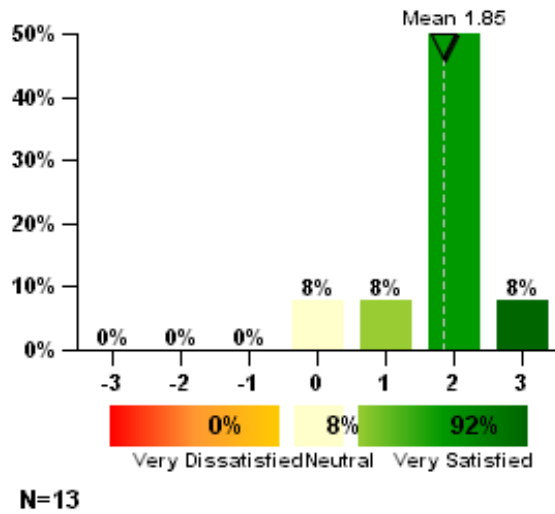
## 2.9 Equipment Vibration

Does vibration in the building contribute to error in your work?

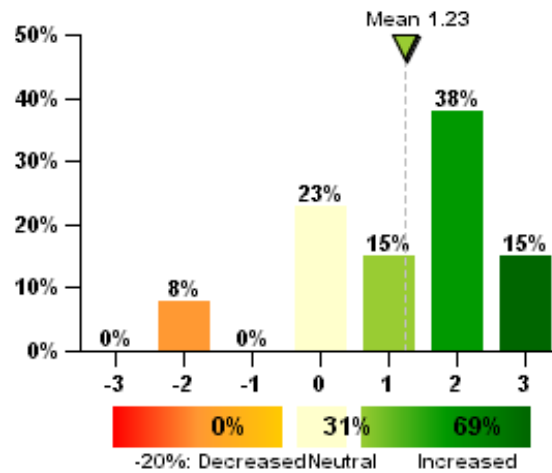


## 2.10 General Comments

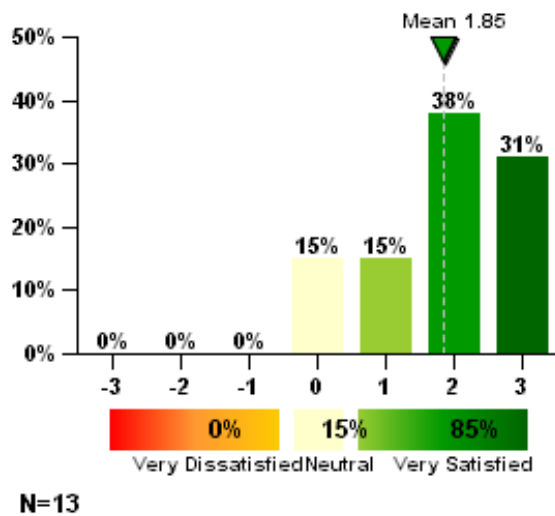
All things considered, how satisfied are you with your personal workspace?



Please estimate how your productivity is increased or decreased by the environmental conditions in this building (e.g. thermal, lighting, acoustics, cleanliness):

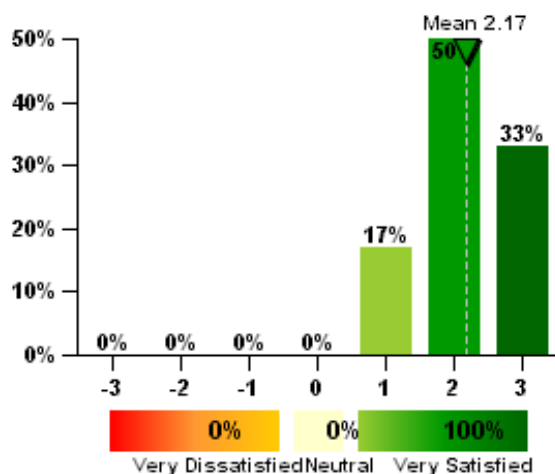


How satisfied are you with the building overall?



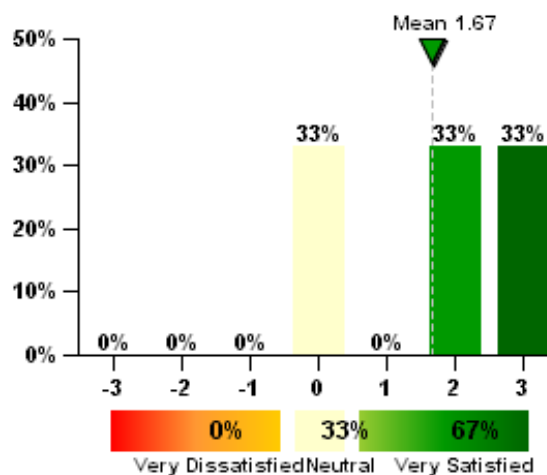
## 2.11 Lab Furnishings

How satisfied are you with the comfort of the desk in your assigned desk area?



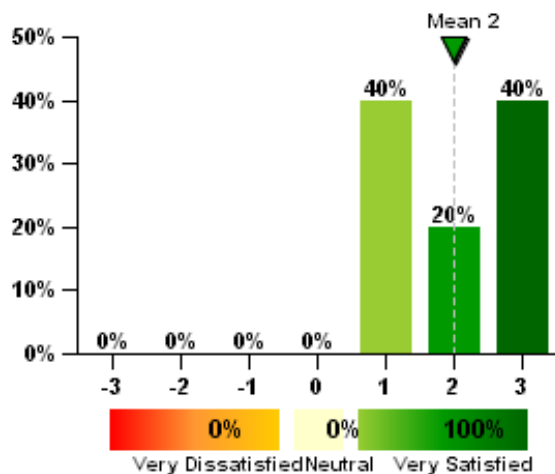
N=6

How satisfied are you with the suitability of lab furnishings (e.g., desk, bench, chair and/or stool) in your assigned bench area?



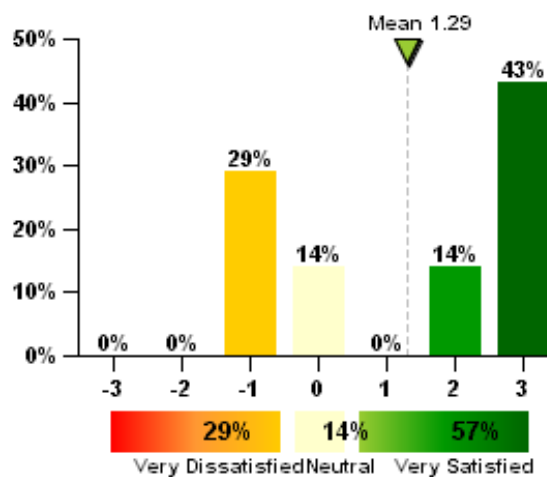
N=6

How satisfied are you with the suitability of lab furnishings in the shared bench area?



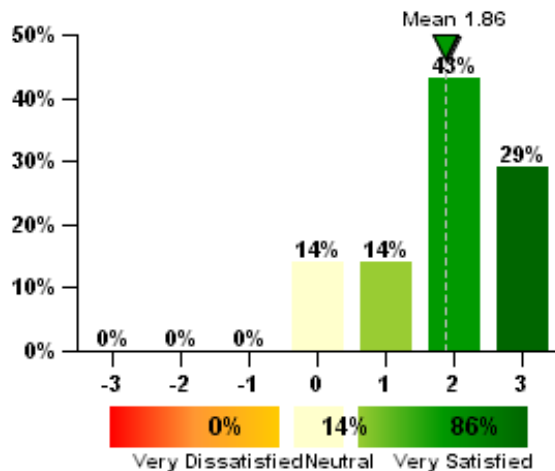
N=5

How satisfied are you with the adjustability of lab furnishings in the lab overall?



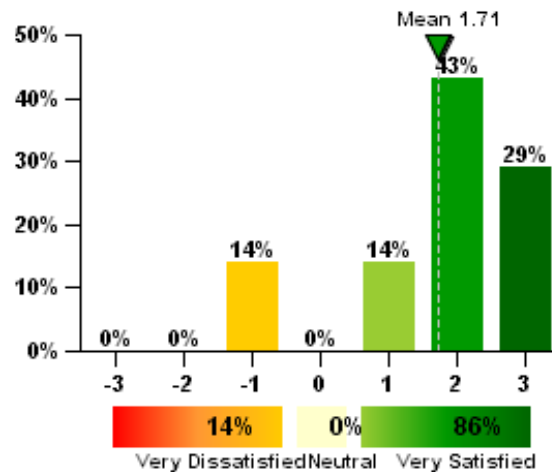
N=7

How satisfied are you with the colors and textures of flooring, furniture and surface finishes?



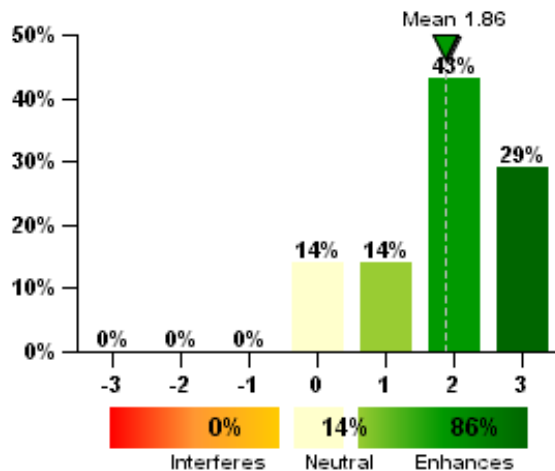
N=7

How satisfied are you with the durability of flooring, furniture and surface finishes?



N=7

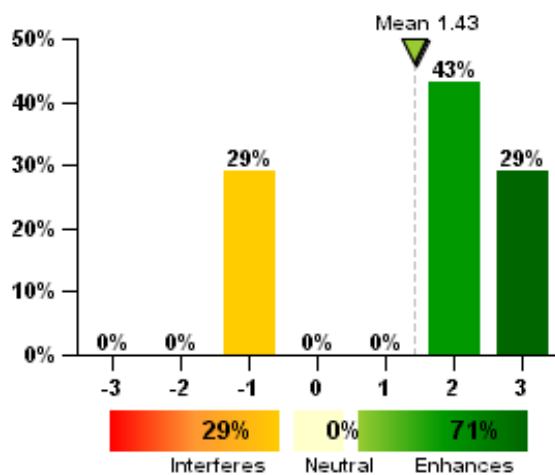
Do your lab furnishings enhance or interfere with your ability to get your job done?



N=7

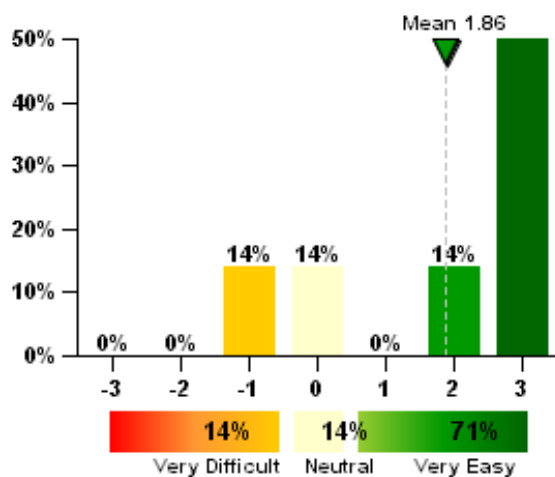
## 2.12 Lab Layout

Does the amount of space available for individual work and storage enhance or interfere with your ability to get your job done?



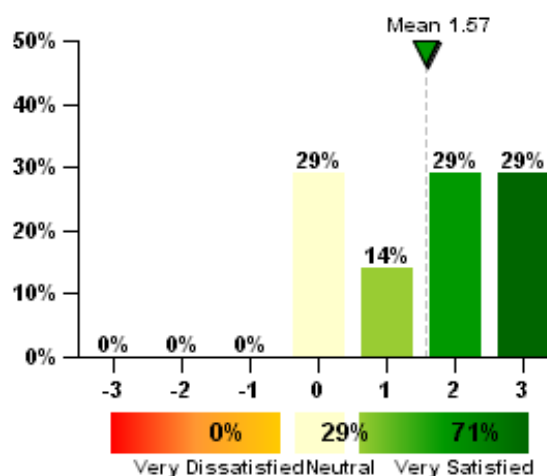
N=7

How easy is it to get around the lab to access what you need?



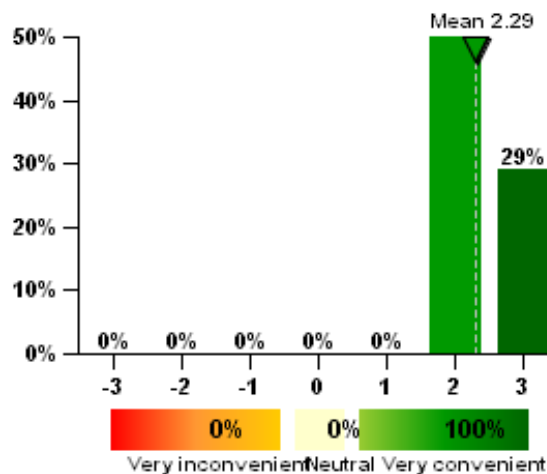
N=7

How satisfied are you with the flexibility of the lab layout?



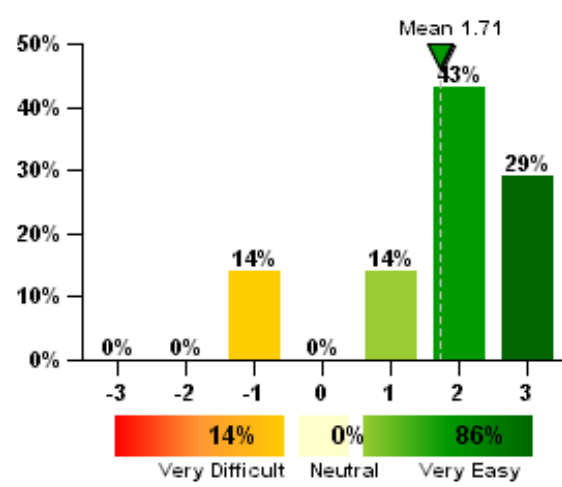
N=7

How conveniently located are the support rooms you need?



N=7

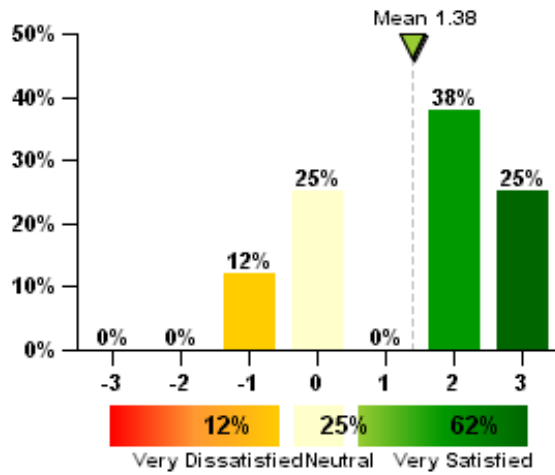
How easy is it to share the lab space with others?



N=7

## 2.13 Lab Workspace Definition

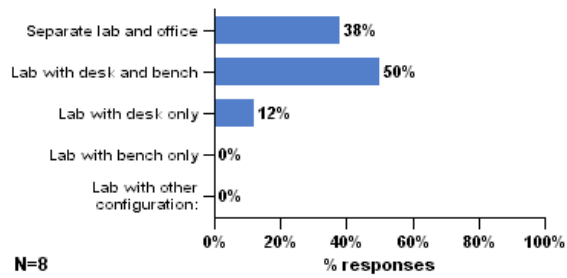
How satisfied are you with this arrangement?



N=8

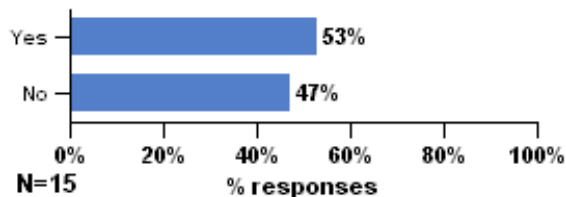


Which of the following best describes your assigned lab workspace in this building?

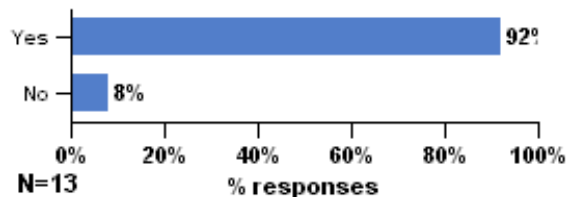


## 2.14 Personal Workspace Description

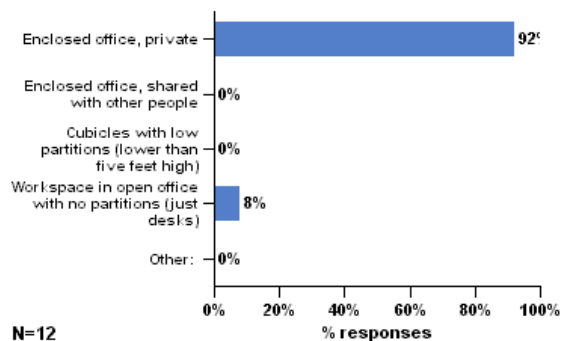
Do you spend more than 10 hours a week in one or more laboratories?



Do you spend more than 10 hours a week in an office (non-laboratory) space in the building?

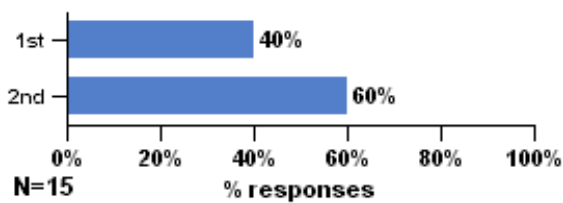


Which of the following best describes your personal workspace?

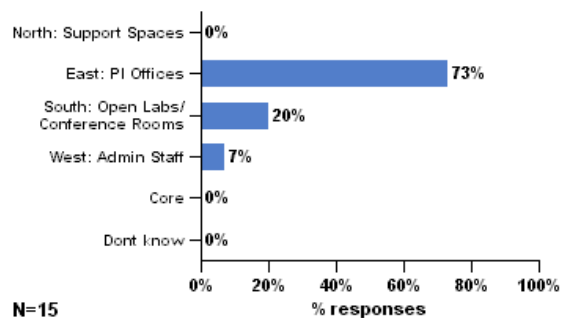


## 2.15 Personal Workspace Location

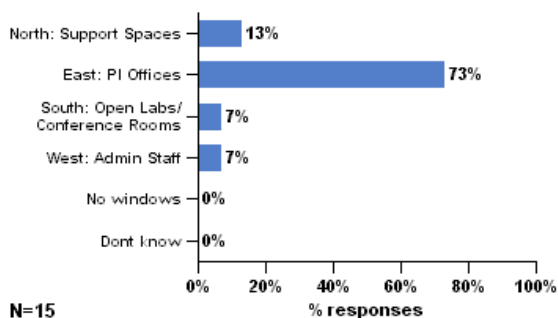
On which floor is your workspace located?



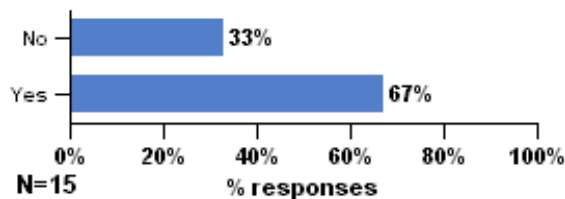
In which area of the building is your workspace located?



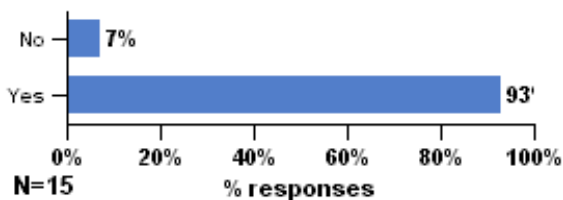
To which direction do the windows closest to your workspace face?



Are you near an exterior wall (within 15 feet)?

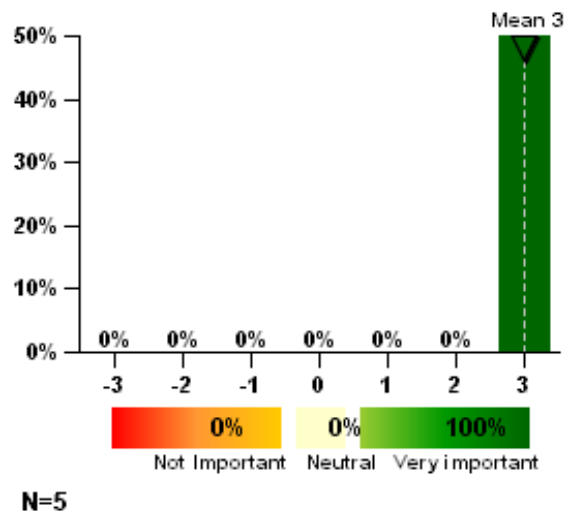


Are you near a window (within 15 feet)?

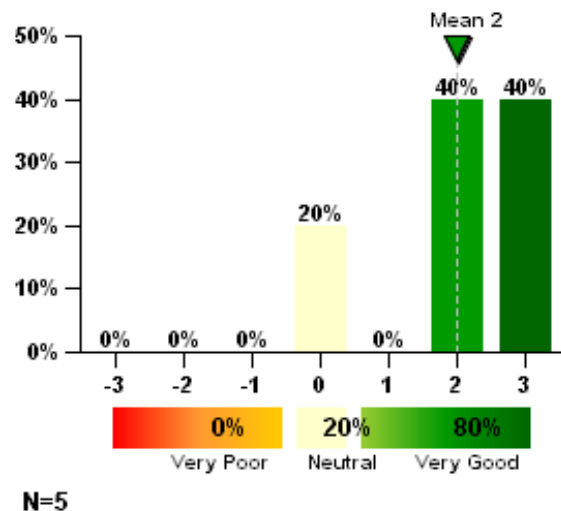


# 2.16 Support Spaces

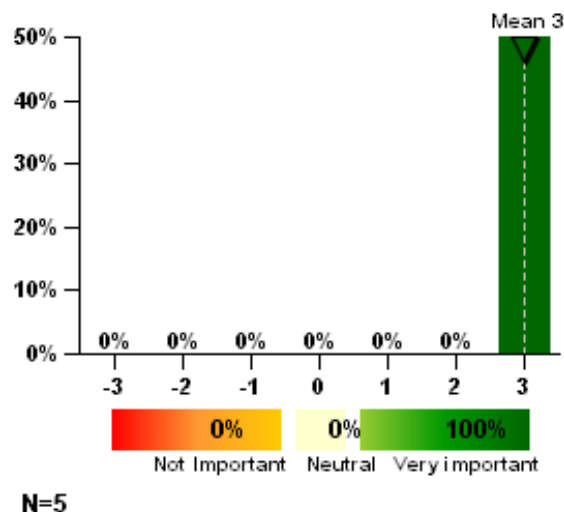
A microscope room : Importance



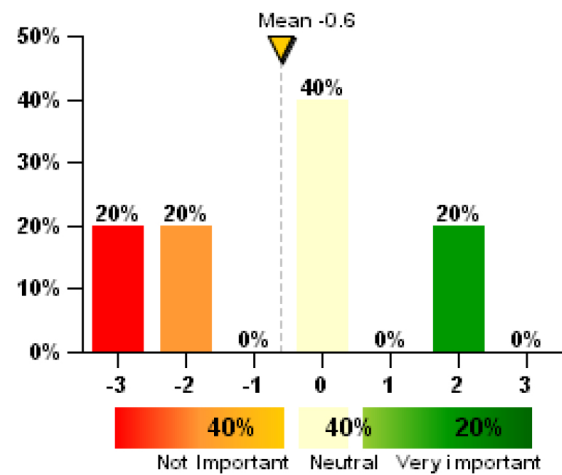
A microscope room : Performance



An imaging room : Importance

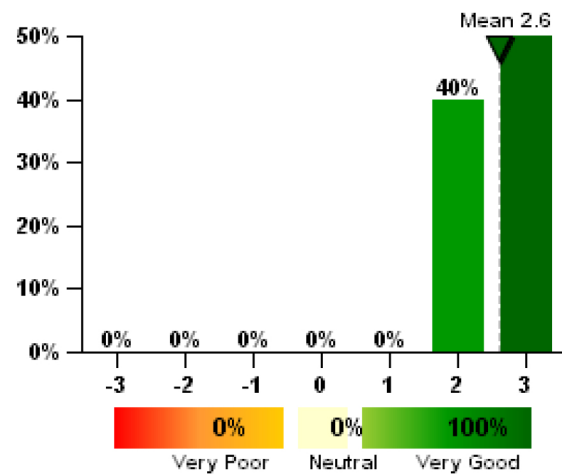


A darkroom : Importance



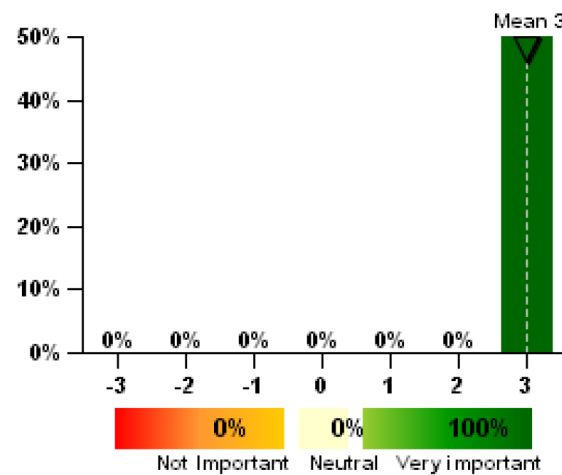
N=5

A tissue culture room : Performance



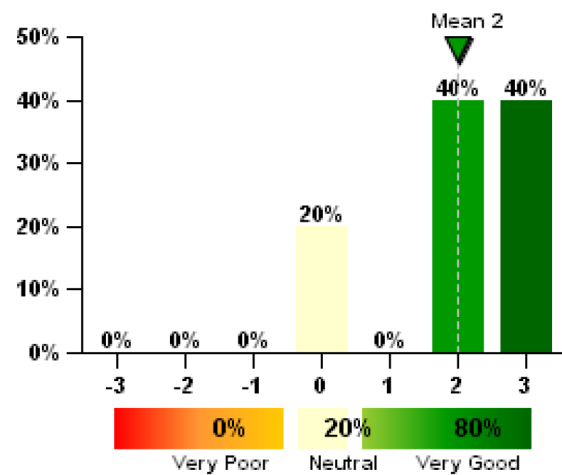
N=5

A tissue culture room : Importance



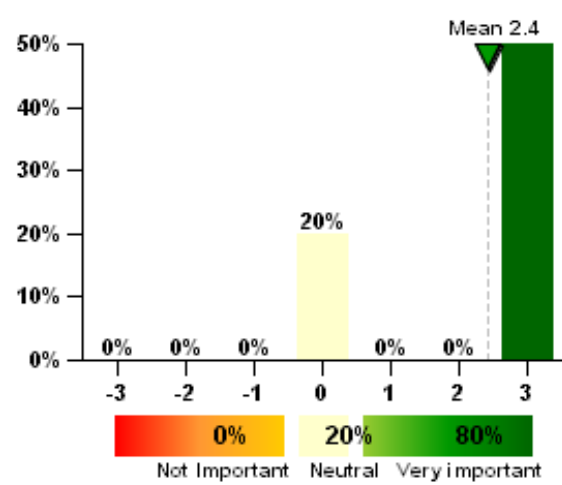
N=5

A cold room : Performance



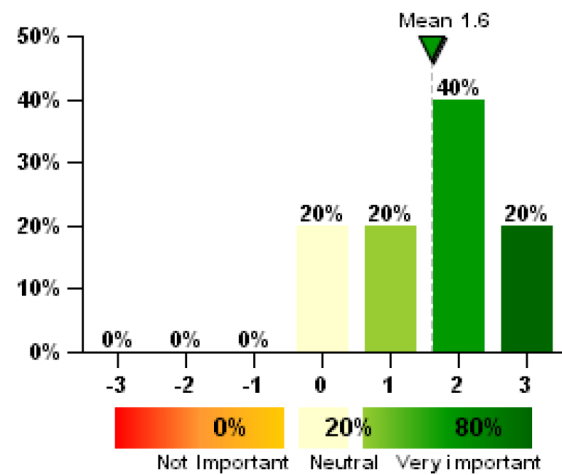
N=5

A cold room : Importance



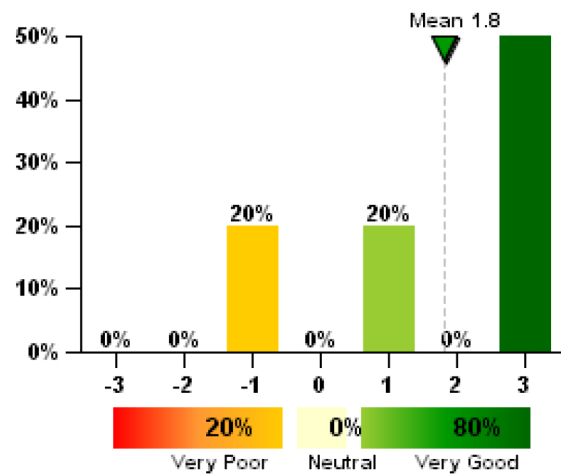
N=5

A procedure room : Importance



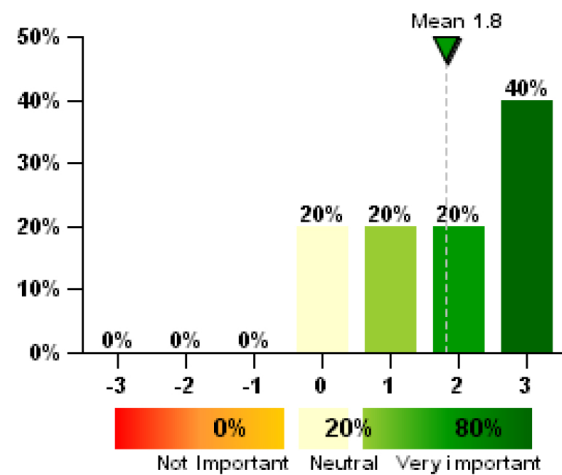
N=5

Glass washing facilities : Performance



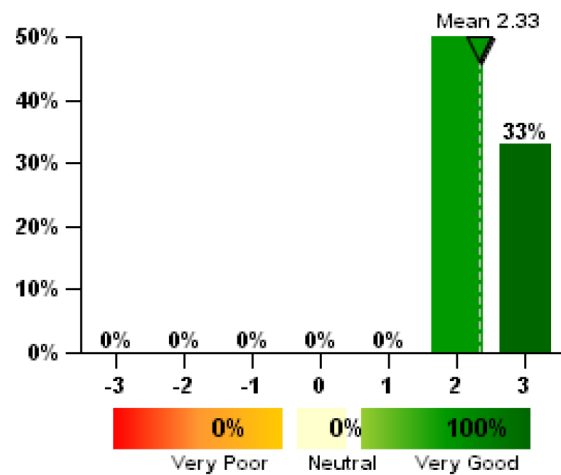
N=5

A surgery room : Importance



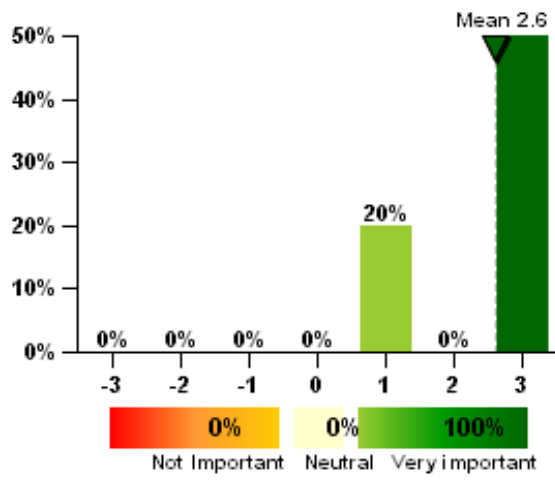
N=5

Conference room : Performance



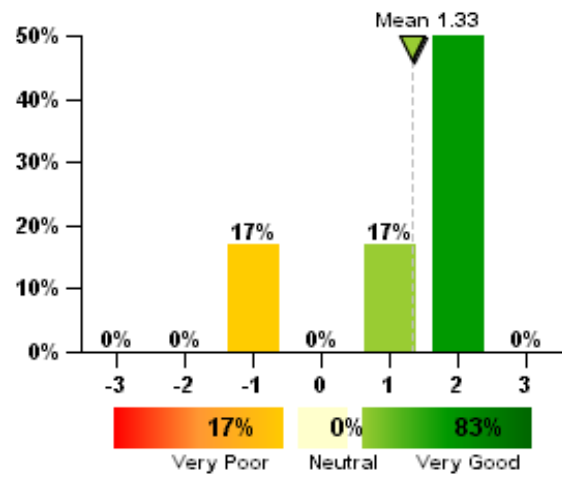
N=6

Glass washing facilities : Importance



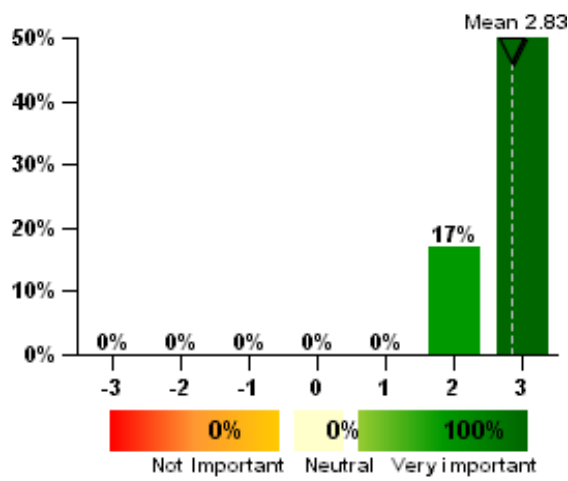
N=5

Break room/interaction space : Performance



N=6

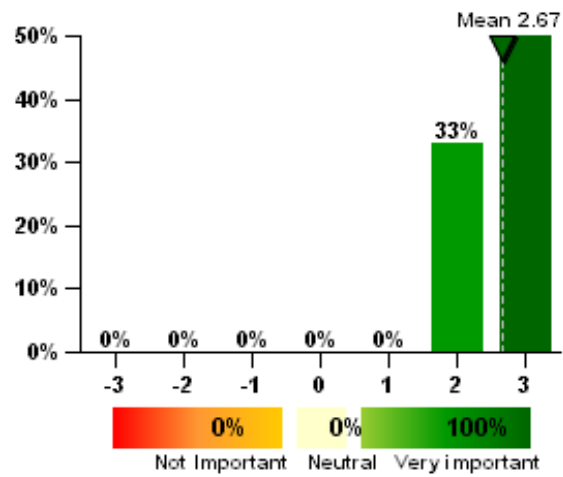
Conference room : Importance



N=6



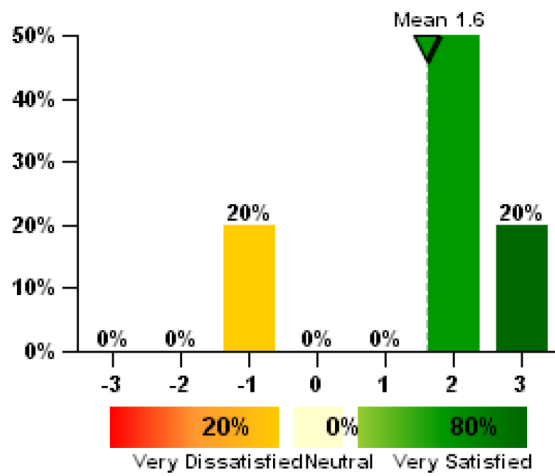
Break room/interaction space : Importance



N=6

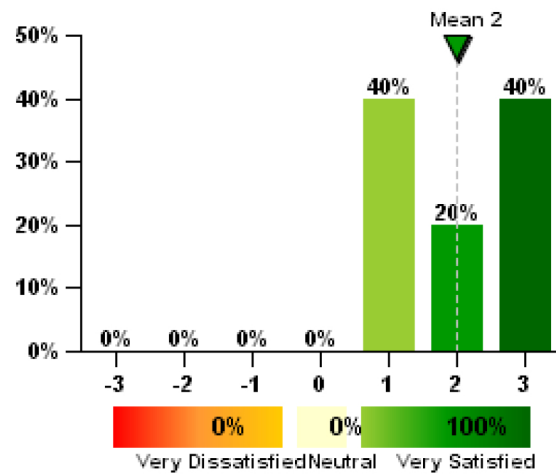
## 2.17 Your Lab

Electricity outlets



N=5

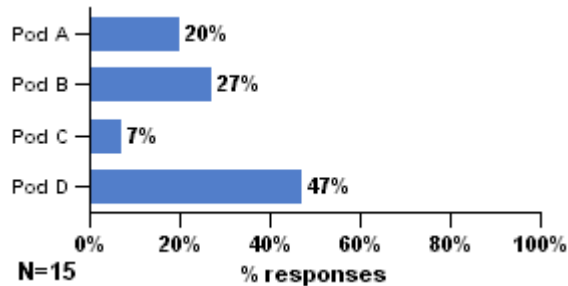
Data ports



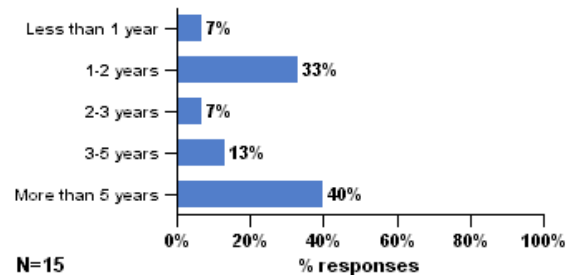
N=5

### 3.1 Background

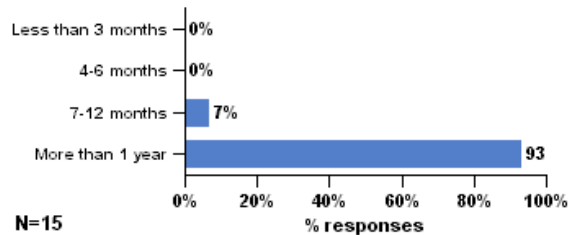
What organization do you work for?



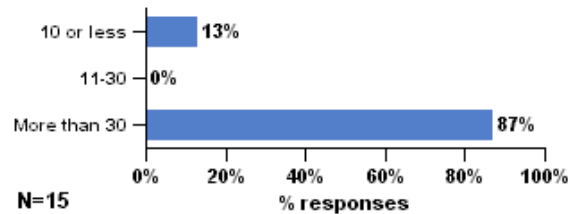
How many years have you worked in the organization?



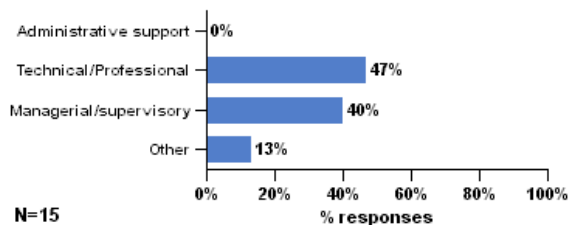
How long have you been working at your present workspace?



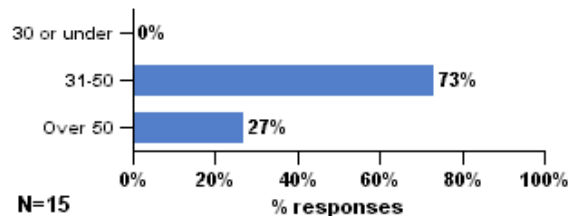
In a typical week, how many hours do you spend in your workspace?



How would you describe the work you do?



What is your age?



What is your gender?

